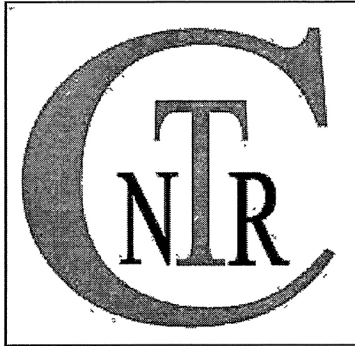


**National Telecommunications Regulatory Commission**



# **Annual Report**

**for the period**

**October 2007 to September 2008**

No. 35 Chisel Street  
P. O. Box GM 690  
Castries  
Saint Lucia (West Indies)

Tel: (758) 458 2035  
Fax (758) 453 2558  
Email: [ntrc\\_slucandw.lc](mailto:ntrc_slucandw.lc)  
Website: [www.ntrc.org.lc](http://www.ntrc.org.lc)

**BLANK PAGE**



## **Telecommunications Sector and its Impact and Significance for the Development of Saint Lucia**

Investment in the telecommunications sector for the period 1<sup>st</sup> October 2007 to 30<sup>th</sup> September 2008 was estimated to have surpassed EC \$66 million and this investment was due largely to capital projects in the existing operators' network build out as well as the deployment of new entrant: Kelcom International's (Karib Cable) network. Direct employment in the telecommunications sector was estimated to be over 700 persons, which represents an increase of 11% over the previous period.

For the reporting period, it was recorded that all sectors of the telecommunications market realized growth in the numbers of subscribers; however growth in the number of subscribers did not translate to an increase in revenue intake, as the total revenue for the sector declined from EC \$276 million (2006/2008) to EC \$240 million (2007/2008). This decline in total revenue was mainly attributable to revenue reductions in the public fixed telecommunications service market (fixed line). In totality, the telecommunications sector represented 9 % of the GDP of Saint Lucia.

### **1.1 State of the Telecommunications Market**

The public mobile telecommunications services of the telecommunications market accounts for approximately 67 percent of the total revenue intake for the telecommunications sector. The public fixed telecommunications services comprised 25 percent and Internet Networks/Services (INS) comprised 8 percent of the total revenue. The following table presents relevant data on the state of the public telecommunications services.

Sector of Market	Service Subscribers		Level of Penetration (%)
	Numbers	Variation over previous period	
Fixed Telecom.	40,940	↑ 3.2 %	24
Public Mobile	169,600	↑ 15 %	99.1
Internet Network/Service	15,480	↑ 9 %	9

*Table 1.1: Telecommunications data for reporting period*

## 1.2 Developments in Telecommunications Markets

Under the reporting period, eight additional individual licences were awarded, under the following categories:

### **Fixed Telecommunications**

Digicel (St. Lucia) Limited

Kelcom International

Tele (St. Lucia) Limited

### **Public Mobile Telecommunications**

21<sup>st</sup> Century Telecoms Network (Caribbean) Limited

### **Internet Networks/Services**

21<sup>st</sup> Century Telecoms Network (Caribbean) Ltd.

Kelcom International

Digicel (St. Lucia) Limited

Tele (St. Lucia) Limited

Kelcom International (Karib Cable) has deployed its network offering subscriber television services and broadband internet services, whilst Tele (St. Lucia) Ltd. launched its fixed public telecommunications service offering Dedicated Internet Access and domestic and international private leased circuits.

The public mobile operators have invested in their network infrastructure to provide near full radio coverage throughout the island. The two mobile operators currently operating in the market utilize core GSM network and have made investments in order to upgrade the core network, which would permit the evolution from circuit-switched GSM network technology to GPRS and EDGE technologies which facilitate packet-switching for greater capacity and data rates.

Internet Networks/Service (INS) providers have upgraded their equipment and all operators offer broadband internet access services to the general public. Broadband internet access is estimated to represent over 96 percent of all INS subscriptions in Saint Lucia. The general trend in the INS market is increased data rates at reduced cost and this may be attributable to increased competition. The Commission has seen surge of interest in next generation network technologies by existing and new operators and it is expected in the coming year, that customers will continue to experience the benefits of reduced costs and improved service offerings in this segment of the market.

### **1.3 Telecommunications Licences, Certification & Registration**

There were a total of twelve (12) telecommunications licences issued for the period under review and pursuant to section 14(7) of the Act, the Commission has prepared for publication in the Saint Lucia Government Gazette a list of the ***Telecommunications Licences that have been Issued, Modified, Renewed or Revoked in Saint Lucia***, as up to September 30, 2008. A copy of the list submitted for publication has been provided as *Appendix A*.

In reference to the backlog of applications for Telecommunications licences and frequency authorisations that have been documented in previous reports, resolution to the issue was reached when the Ministry agreed to prepare the licence documents which would be transmitted to the Minister for approval. Officials of the department of Public Utilities within the Ministry received training facilitated by ECTEL in preparation of the telecommunications licence and frequency authorisation documents.

#### **1.4 Type Approval Certification**

During the reporting period, the Commission issued sixteen (16) Certificates of Type Approval to manufacturers or their authorised agents for certain devices. **Type approval** is granted by the Commission to a device that meets a minimum set of technical and regulatory considerations. Under the Telecommunications (Terminal Equipment and Public Network) Regulations 2002, Type Approval is required for devices or equipment which are to be installed, sold for use or used in Saint Lucia. Devices which meet the standards and are granted type approval are recorded in a register of type approval and the respective manufacturers or authorised agents are issued certificates of type approval. Type approval of any particular device has a duration of ten (10) years and is non-transferrable. Please see *Appendix B* for a copy of the register of type-approved equipment.

#### **1.5 Dealers and Suppliers of Terminal Equipment and Related Services**

Pursuant to regulations 17 of the Telecommunications (Terminal Equipment and Public Network) Regulations 2002, the Commission is mandated to keep a register of Dealers and Suppliers of Terminal Equipment and Related Services. For the reporting period the Commission did not record any new registration into the register of Dealers and Suppliers of Terminal Equipment and Related Services. See Appendix C for a copy of the register of Dealers and Suppliers of Terminal Equipment and Related Services.

## **1.6 Closure of Longstanding Open Telecommunications Applications**

Further communication was received from ECTEL on the matter of the status of applications forwarded to them for review and recommendation. ECTEL communicated to the Commission that those applications in which no response was forthcoming, the applicants should be informed that the time for review and issuance of a recommendation had passed and that the applicant should be asked to reapply, however the application fee for the new applications should be waived. The Commission acted on ECTEL's advice, and did inform those applicants who were in this category.

## **1.7 Customer Premise Wiring (CPW)**

Finalisation of the guide for customer premises (inside) wiring is nearing completion, and it provides valuable information on telecommunications wiring within the premise of the customer. It is hoped that the guide for CPW will encompass industry standard practices in order to better inform all stake holders and ensure that CPW and the associated terminal equipment perform to a satisfactory standard.

## TELECOMMUNICATIONS FEES

For the reporting period, the following amounts in telecommunications fees were collected by the Government of Saint Lucia (GoSL) and by ECTEL.

Licence Fees (GoSL)	EC\$ 7,097,475.00
Spectrum Fees (ECTEL)	EC\$ 1,804,500.00
<b>TOTAL</b>	<b>EC\$ 8,901,975.00</b>

### 2.1 Telecommunications Licence Fees

The estimates for telecommunications licence fees collected by the Inland Revenue Department (IRD) for 2007/2008 increased from the last period, as shown in Table 2.1.

Year	2003/4	2004/5	2005/6	2006/7	2007/8
Licence Fees (EC\$)	1,549,825	5,319,665	5,206,445.30	5,928,841.3	7,097,475.00
Change	-	↑ 243%	↓ 2 %	↑14%	↑20%

Table 2.1: *Comparison of the Telecommunications Licence Fees Collected by the Inland Revenue Department*

### 2.2 Frequency Authorisation (Spectrum) Fees

The amount collected as telecommunications frequency authorisation (or spectrum) fees in Saint Lucia increased significantly over the last reporting period, as illustrated in Table 2.2.

Year		2003/4	2004/5	2005/6	2006/7	2007/8
Spectrum Fees (EC\$)		986,733	3,397,800	1,733,800	1,310,800	1,804,500
Change		-	↑ 244%	↓ 49 %	↓ 24%	↑ 38%

Table 2.2: Comparison of the Spectrum Fees Collected by ECTEL in Saint Lucia

### 3

## TARIFF & PRICING

During this reporting period, consumers continued to benefit from rate reductions and improved service offerings within most of the key telecommunications market segments. (See appendix D)

### 3.1 Services Provided

Within the period October 2007 to September 2008, Cable & Wireless Limited introduced the following new services:

- Addition of Voice mail and Call Waiting to all existing lines;
- Mega-Lite Broadband Plan

Addition of Voice mail and Call Waiting to all existing lines – allows value added service of voice-mail and call waiting features to be included to each residential and business telephone line at no extra cost to the subscriber.

Mega-Lite Broadband Plan – The Mega-Lite Broadband Plan offers an internet access service for both residential and commercial clients. Several packages are

available with bandwidths between 1024 kbps and 4096 kbps. The following tables provide details of the service plans.

Service	Speed (Download/Upload) (kbps unless noted)	Setup Fee	Modem	Charge	Additional Charge
Broadband on Demand	512/256	\$150	Single Port	\$50/ 12 hours	\$5/ hour
Mega Lite	512/256	\$100	Single Port	\$19.99 / month	\$3.99 / day
Mega	1544/512	\$150	Single Port	\$79.00/month	NA
Mega Plus	3072/768	\$150	Four port	\$149.00/month	NA
Mega Max	3072/768	\$150	Four port + wireless	\$249.00/month	NA

*Table 3.1A: Cable and Wireless Residential Broadband Packages*

Service	Speed (Download/Upload) (kbps unless noted)	Setup Fee	Modem	Charge	Additional Charge
Premier	1024/256	\$150	Single Port	\$149.00/month	NA
Premier Plus	3072/512	\$150	Four port + wireless	\$279.00/month	NA
Mega Max	4096/768	\$150	Four port + wireless	\$349.00/month	NA

*Table 3.1B: Cable and Wireless Business Broadband Packages*



### 3.2 Service Changes

During the reporting period, Cable & Wireless (West Indies) Limited initiated the following rate or service changes for telecommunications services regulated under the approved Price Cap Plan:

- Change to the way pay phone to mobile calls are charged;
- Reduction to the Rates for Dedicated Internet Access Service;

Pursuant to r. 22 of the Telecommunications (Retail Tariff) Regulations 2005, Cable & Wireless (West Indies) Limited applied to the Commission to change its rates for its Dedicated Internet Access (“DIA”) Service on July 1<sup>st</sup>, 2008. In accordance with the requirement of rule 8 of the Price Cap Plan, a Rate Change Compliance Filing was filed with the application.

Bandwidth	Installation Fee	Proposed Monthly	Proposed 1 Year Monthly	Proposed 2 Year Monthly	Proposed 3 Year Monthly
1 Mbps	\$2,000	1,100	990	880	770
1.5 Mbps	\$2,000	1,700	1,530	1,360	1,190
2 Mbps	\$2,000	2,300	2,070	1,840	1,610
3 Mbps	\$4,320	3,400	3,060	2,720	2,380
4 Mbps	\$4,320	4,500	4,050	3,600	3,150
5 Mbps	\$6,750	5,600	5,040	4,480	3,920
6 Mbps	\$6,750	6,700	6,030	5,360	4,690
7 Mbps	\$6,750	7,800	7,020	6,240	5,460
8 Mbps	\$6,750	8,900	8,010	7,120	6,230
9 Mbps	\$6,750	10,000	9,000	8,000	7,000
10 Mbps	\$6,750	11,100	9,990	8,880	7,770
15 Mbps	\$6,750	16,600	14,940	13,280	11,620
20 Mbps	\$6,750	22,000	19,800	17,600	15,400
25 Mbps	\$6,750	27,400	24,660	21,920	19,180
30 Mbps	\$6,750	32,700	29,430	26,160	22,890
45 Mbps	\$6,750	48,600	43,740	38,880	34,020

Table 3.2: Approved rate changes in EC\$ for the Direct Internet Access Service

**BLANK PAGE**

### **3.3 Telecommunications Rates in Effect in Saint Lucia**

For completeness of this discourse on telecommunications rates, the rates for services offered by the telecommunications providers in Saint Lucia has been included as Appendix D.

# NATIONAL TELECOMMUNICATIONS REGULATORY COMMISSION

## 4.1 Composition of the Commission

The National Telecommunications Regulatory Commission saw the appointment of the following Commissioners for a three (3) year term starting October 22, 2007:

Mr. Stephen Julien (Chairman)

Mr. Nigel George

Mr. Lionel Ellis

Mr. Micha Landers

Mrs. Tracy Polius

However, the constitution of the Commission changed upon the resignation of Mr. Julien as Chairman, effective August 1, 2008. Subsequent to the resignation of Mr. Julien, the Commission decided to appoint Mrs. Tracy Polius as *Acting Chairperson* of the Commission, until the appointment of a chairperson.

## 4.2 Diary of Key Events

*A Diary of Key Events* during the period 1<sup>st</sup> October 2007 to 30<sup>th</sup> September 2008 has been presented as Appendix E, however below is a synopsis of the most significant events.

- In October 2007, the Minister with responsibility for Telecommunications appointed a new board of Commissioners to regulate the Telecommunications Sector.

- ECTEL notified the Commission of the class licence designation of broadcast network licence and finalized the broadcast network licence application forms.
- Kelcom International (Karib Cable) launched its internet networks/services and subscriber television services to the public.
- In January 2008, the Commission moved into its new offices at No. 35 Chisel Street, Castries.
- The Commission reworked the organisational structure of the secretariat.
- The Frameworks for Maritime Mobile Radio Service and Land Mobile Radio Service were published.
- In April 2008: An extension of the Interconnection Agreement between Digicel (St. Lucia) Ltd and Cable and Wireless was granted.
- In May 2008, the Technical Standards for Mobile Radio Service was published.
- ECTEL published its Manual on the Application Process for Assignment of Numbers.

## THE SECRETARIAT

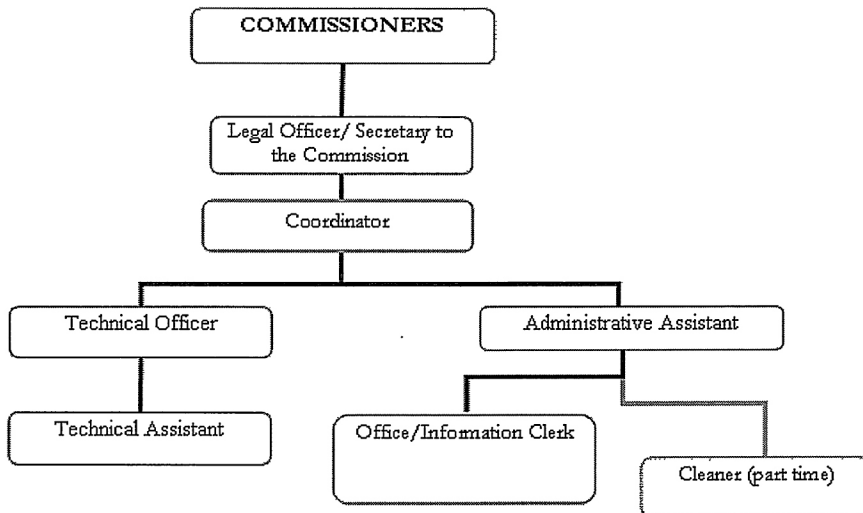
### 5.1 Relocation of the Office of the Commission

Due to concerns expressed with regard to the maintenance of the building which housed the office of the Commission, the decision was taken not to renew the lease agreement with the landlord of the Global Tile Building (Bois D'Orange). As a direct result of potential health risks posed to staff, an urgent decision was taken to temporarily relocate the office of the Commission in the headquarters of ECTEL. The secretariat of the Commission was functioning at ECTEL for the period October 4, 2007 to December 31, 2007, whilst a suitable office space was sought. Notices of the relocation of the office were placed in the local newspapers and on the premises at Bois D'Orange indicating to the public that the Commission had relocated its offices. A suitable location that met most of the immediate needs of the Commission was obtained on the first floor of the S&S building, No. 35 Chisel Street, Castries and therefore a lease agreement was entered into. The Commission relocated its offices into two suites, No. 1 and No.3 of the S&S building.

The Commission approached ECTEL for a capital loan of \$55,000 in order to cover the costs associated with the construction of office units in both suites. ECTEL agreed to advance the payment in order to facilitate renovation of the office space to accommodate the secretariat and the Commission in turn agreed to reimburse the monies borrowed in its next fiscal year. The garage for the MMS vehicle however remained at the property at Bois D'Orange until March 2008, when it was removed and the site on which it stood was restored as requested by the landlord. This brought on additional fiscal burdens which were not planned, and up to the reporting time, the reconstruction of the MMS garage or shelter has not been accomplished. The MMS vehicle was relocated to the headquarters of ECTEL.

## 5.2 Restructuring of the Secretariat

For the reporting period, the organisational structure of the Secretariat underwent modification since the last Annual Report. After the departure of Mr. Alexis Fevrier, who held the post of Coordinator, there was a change in the organisational structure of the secretariat inverting position of Coordinator and Legal Officer. The organisational structure of the secretariat up to the end of the reporting period is illustrated in figure 5.2.



*Figure 5.2: Organisational Structure for the National Telecommunications Regulatory Commission.*

## **5.3 Appointments**

### **5.3.1 Position of Coordinator**

Effective March 28, 2008, the post of Coordinator to the Commission became vacant when the Commission and Mr. Alexis Fevrier separated. Mrs. Shana Willie-Matoorah, the Legal Officer/Secretary to the Commission was made *Officer in Charge* of the secretariat, until a suitable person was appointed to the post of Coordinator. The vacant post of Coordinator was advertised in the local newspapers and other media, and subsequently interviews were held with short-listed candidates. Mr. Anthony Blasse was selected as the Coordinator to the Commission and accepted the offer of employment with the Commission effective June 2, 2008.

### **5.3.2 Position of Legal Officer/Secretary to the Commission**

In light of the decision to change the operational structure of the secretariat, the contract for Mrs. Shana Willie-Matoorah, the Legal Officer/Secretary to the Commission was revised to reflect the new operational structure and as such the new contract of employment became effective June 2, 2008.

### **5.3.3 Position of Technical Assistant**

The contract of the Technical Assistant to the Commission, Mr. Fabian Lewis was renewed effective December 7, 2007.

### **5.3.4 Position of Office Information Clerk**

The contract of the Office Information Clerk to the Commission, Miss Wilma Burton was renewed effective September 1, 2008.



### **5.3.5 Temporary Staff**

Ms. Melesia Charles was employed on a temporary basis to assist the administrative staff in the verification exercise of the Commission's records. Her employment covered the period June 2008 to mid-August 2008.

## **5.4 Training & Professional Development**

### **5.4.1 National Consultative Workshop on e-Laws**

The Legal Officer to the Commission, Mrs. Shana Willie-Matoorah attended a workshop on e-laws which was held on February 6, 2008 at NIC conference room. The substantive matter of the Workshop included:

- Electronic-Commerce and Electronic-Government;
- Security and Regulatory Industries;
- Privacy and Data Protection;
- Cyber Crime Detection and Prosecution;
- Ownership of Intellectual Property; and
- Electronic Transactions and Freedom Information Bills.

### **5.4.2 ECTEL's Application Process for Assignment of Numbers Workshop**

Commissioner Lionel Ellis attended a workshop on the application process for assignment of numbers, which was held in Grenada from April 17 to April 18, 2008. The objectives of the workshop included:

- (i). Clarifying the roles and responsibilities of all players in the process of assigning numbers and maintaining the numbering plan;
- (ii). Providing hands on training to the NTRCs and telecommunications providers on the requirements under the law with focus on the application process and necessary forms; and
- (iii). Formalizing the adoption of a procedure manual for the numbering process.

### **5.4.3 ECTEL's ICT Pilot Project Workshop**

Mr. Anthony Blasse, the Coordinator to the Commission, attended a workshop in Grenada, entitled ICT Pilot Projects for ECTEL Member States which occurred from August 21, 2008 to August 22, 2008. The ICT workshop was hosted by ECTEL and had as its objectives:

- (i). Review of the consultants reports on ICT Pilot Projects;
- (ii). Arrive at agreements on the next steps towards selection and implementation of Pilot Projects in the ECTEL Member States; and
- (iii). Review previous work on the Model ICT Policy and Plan for ECTEL Member States and to determine the next steps towards formal adoption of the Model ICT Policy and Plan.

## 6

### Financial Review

In this chapter, the financial accounts for the National Telecommunications Regulatory Commission, for the period 1<sup>st</sup> October, 2007 to 30<sup>th</sup> September, 2008, are presented and discussed. An analysis of the income inflows and usage of the funds allocated to the Commission will be discussed. The discussion is supported by the Auditor's Financial Report, which has been included.

#### 6.1 Summary of Income Inflows and Usage

For the period 1<sup>st</sup> October, 2007 to 30<sup>th</sup> September, 2008, ECTEL disbursed *EC \$ 757,233.00* to meet the Commission's proposed operating budget (OPEX) of *EC \$ 768, 465.80*. It would be noted that there was a variance of *\$11, 232.80* between the proposed OPEX budget and the disbursed funds, therefore reductions in the OPEX budget were made in the following areas to closely align the proposed expenditure with the expected receipts:

- Staff Insurance- Medical: \$2500
- Public Education- \$2000
- Surveys-\$2500
- Membership& Subscription - \$600.00
- Service Contracts - \$2400

However, during the fiscal year, the allocations had to be adjusted to permit increases in the following areas:

- Utilities & Rental: to reflect the relocation of the office of the Commission.

In its proposed budget submission for the reporting period, the Commission made submissions for both an operating expenditure budget and a capital expenditure (CAPEX) budget. The underlying rationale of the CAPEX budget was to obtain finances in order to procure spectrum monitoring equipment and software to address the deficiencies identified in the spectrum management/monitoring capability of the Commission. Unfortunately ECTEL did not approve the CAPEX as submitted and reduced it from the proposed sum of EC \$297,484.00 to EC \$3,767.00.

## 6.2 Financial Audit Report

The Financial Audit Report was prepared by independent auditors, G. Llewellyn Gill and Company (*See Appendix F for details*). Figure 6.2 presents a comparison of the distribution of the Commission’s expenditure for the fiscal periods October 2006 to September 2007, and October 2007 to September 2008.

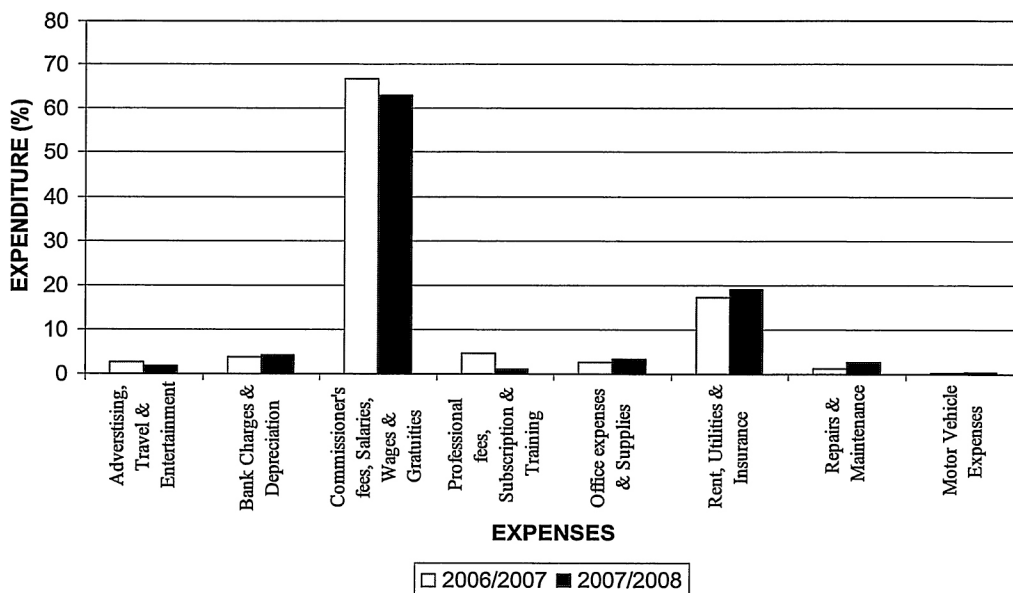


Figure 6.2: Distribution of Expenditure for Fiscal Years 2006/2007 and 2007/2008

# LIST OF CONTENTS

<b>List of Figures and tables .....</b>	<b>iv</b>
<b>Abbreviations and Acronyms .....</b>	<b>iv</b>
<b>Executive Summary .....</b>	<b>vi</b>
<b>1 Telecommunications Sector and its Impact and Significance for the Development of Saint Lucia .....</b>	<b>1</b>
1.1 State of the Telecommunications Market.....	1
1.2 Developments in Telecommunications Markets.....	2
1.3 Telecommunications Licences, Certification & Registration.....	3
1.4 Type Approval Certification.....	4
1.5 Dealers and Suppliers of Terminal Equipment and Related Services .....	4
1.6 Closure of Longstanding Open Telecommunications Applications.....	5
1.7 Customer Premise Wiring (CPW).....	5
<b>2 Telecommunications Fees.....</b>	<b>6</b>
2.1 Telecommunications Licence Fees .....	6
2.2 Frequency Authorisation (Spectrum) Fees .....	6
<b>3 Tariff &amp; Pricing.....</b>	<b>7</b>
3.1 Services Provided .....	7
3.2 Service Changes .....	9
3.3 Telecommunications Rates in Effect in Saint Lucia.....	10
<b>4 National Telecommunications Regulatory Commission .....</b>	<b>11</b>
4.1 Composition of the Commission .....	11
4.2 Diary of Key Events.....	11
<b>5 The Secretariat.....</b>	<b>13</b>
5.1 Relocation of the Office of the Commission.....	13
5.2 Restructuring of the Secretariat .....	14

The data displayed in figure 6.2, indicates that there have been no significant variations in the distribution of expenses for the periods 2006/2007 and 2007/2008, although there was an increase in the 2007/2008 expenditure by EC \$106, 003. This increase of expenditure over the previous period was mainly attributable to the cost incurred in the relocation of the office, higher electricity rates due to the increase in the surcharge, salary increments and a reported cash loss.

The cost incurred with the relocation of the Commission's office to the S&S Building was a capital expense and the relocation was necessary due to many concerns expressed in a previous section. The initial imbursement to meet the relocation cost took the form of a soft loan from ECTEL, which the Commission has committed to reimburse in the next financial year.

The salary increments were necessary in order for the Commission to keep and attract the necessary expertise it required in meeting its mandate. For the reporting period, there was an increase of the surcharge in the electricity rates which was mainly attributable to higher than usual energy prices on the global market. The cash loss identified in the auditor's report is an area of paramount concern to the Commission and one which will warrant investigations by the relevant authorities so that full disclosure may be obtained and the appropriate course of action is pursued.

### **6.3 End of Cap on ECTEL's Disbursement to NTRCs**

The cap on the operational budgets of the Commissions of the Member States which was instituted by the ECTEL Council of Ministers came to an end at the close of this fiscal year. The cap essentially limits the contribution of ECTEL to the operating budgets of the Commissions of the Member States; however it does not preclude the NTRCs from sourcing other avenues of funding.

The ECTEL Council of Ministers had indicated that the operating budget of the Commission was too high, although the Commission faced extreme difficulty in realizing some of the tasks outlined in its work schedule due to the financial restraints it faced. Areas such as public education, training of staff

and especially relevant training for the new Commissioners had to be curtailed or removed completely from the proposed operating budget in order to align more closely with the disbursed funds. However, the areas which have been removed/curtailed from this operating budget will have to receive some priority in the 2008/2009 budget.

## 7

### OTHER SECTOR ISSUES

#### 7.1 Public Consultations

The reporting year saw at least thirteen (13) public consultations which are listed below:

1. Licensing of Amateur Radio Operators -ECTEL
2. Access Deficit Charge - ECTEL
3. Long Run Incremental Cost (LRIC) Model – ECTEL
4. Draft Telecommunications (Conduct of Public Hearing) Regulations – ECTEL
5. Draft Telecommunications (Interconnection) Regulations – ECTEL
6. Draft Universal Service Fund Guidelines - ECTEL
7. Caribbean Spectrum Management Policy Framework- CTU
8. Draft Technical Standards for Maritime Mobile Radio Service – NTRC (Saint Lucia)
9. Draft Technical Standards for Land Mobile Radio Service – NTRC (Saint Lucia)

10. Draft Technical Standards for Aeronautical Mobile Service – NTRC (Saint Lucia)
11. Draft Technical Standards for Amateur Radio Service – NTRC (Saint Lucia)
12. Draft Technical Standards for Family Radio Service –NTRC (Saint Lucia)
13. Draft Technical Standards for Citizen Radio Service –NTRC (Saint Lucia)

## **7.2 Quality of Service Reports**

Quality of service (QoS) monitoring requires that measurements be made regularly and that such measurements be referenced and compared to some standard parameters/criteria in order to determine the level of those measurements. QoS monitoring is done by both the regulator and the telecommunications service provider. The regulator may monitor the QoS for several reasons. Here are some of the aims of QoS monitoring:

- Maintaining or improving quality in the presence of competition
- Maintaining or improving quality in the absence of competition.
- Understanding the state of the telecommunications market.
- Enabling interconnected networks work well together.
- Checking claims by operators.
- Helping operators to achieve fair competition.
- Assisting customers to make informed choices.

Pursuant to section 15 of the Telecommunications (Quality of Service) Regulations 2007, the Commission enacted mechanisms of QoS reports to be



furnished by telecommunications service providers. The QoS report is based on certain service criteria and parameters and must be submitted to the Commission by the telecommunications service providers on a quarterly basis.

### **7.3 Expiration of Price Cap Plan**

The Price Cap Plan implemented in Saint Lucia was part of the *Price Cap Implementation Agreement* between Cable & Wireless (West Indies) Limited, ECTEL and the governments of the Contracting Member States, which was signed on July 30 2004, in St. George's, Grenada. The purpose of the agreement was to establish a course of action towards the implementation of price cap regimes on Cable and Wireless, which is the incumbent fixed-line network operator in the ECTEL Member States.

Price cap regulations are generally intended to protecting the public from excessive rate increases by placing a cap on the retail rates charged for local telecommunications services, providing telecommunications operators with incentives to reduce costs and improve the efficiency of their operations, while fostering competition in the local telecommunications market.

The Price Cap Plan which was due to expire at the end of November 2008 was granted an extension of one (1) year and as such its new expiration date is 30<sup>th</sup> November 2009. The rationale for the extension was to provide the regulators with sufficient time to rework the new Plan.

### **7.4 Update on Numbering Resource**

The National Numbering Plan provides the general principles to be applied in the management of the Numbering Resource, the Processes and Procedures relevant to number resource management, the guidelines for the allocation, assignment and management of the Central Office Codes (COC or NXX), the Dialling Plan, the principles and procedures for the assignment and use of the short codes and the relevant forms and procedures for the management of the Numbering Resource. The Numbering Plan is necessary to ensure equitable

distribution and management of the numbering resource so as to foster a liberalized telecommunications environment.

In keeping with the principle of harmonisation, the ECTEL Member States have a standardized Telecommunications (Numbering) Regulation in effect and ECTEL has finalized the National Numbering Plan. ECTEL has also published a manual entitled, “*Manual on the application process for the assignment of Numbers in the ECTEL Member States*”. This manual acts as a general guide providing pertinent information to entities in the use of the National Numbering Resource.

## 8

### **2007/2008 WORK PROGRAMME**

A review of the Commission’s Work Programme for 2006/2007 demonstrates that most of projects outlined have been completed or are near completion. The projects undertaken were in addition to the day-to-day and substantive work of the organisation. A number of areas have been delayed as the Commission awaits vital information from various stakeholders in the telecommunications sector.

#### **8.1 Update on 2007/2008 Work Plan**

As with the previous work plan for the period 2006/2007, the major focus of the 2007/2008 Work Plan was the verification of the records of the Commission; the preparation and publication of approved Technical Standards governing the mobile radio services and the completion of the framework documents. Given the volume and scope of work necessary for verification of the records, the Commission sought the assistance of Ms. Melesia Charles on a temporary basis to supplement the administrative staff and so accelerate the verification process.

The technical standards for the Mobile Radio Services were drafted and placed in public consultation and although there was a dearth of public comments, the technical standards were edited where necessary and published on May 27, 2008.

The last of the framework documents: **Framework for Aeronautical Mobile Service in Saint Lucia** was drafted and near the end of this reporting period the framework had been placed in public consultation. The framework establishes a guide for the telecommunications requirements of Aeronautical Mobile Service operations in Saint Lucia. The document specifies among other things:

- (a) an overview of the aeronautical telecommunications services;
- (b) the application and licensing processes;
- (c) pertinent provisions from the telecommunications legislation, especially on standards and harmful interference; and
- (d) some basic operating guidelines and equipment requirements for aeronautical mobile radio service.

For ease of reference, a copy of the 2007/2008 Work Plan Schedule has been included as Appendix G.

### **8.1.1 Frameworks**

During the period under review, an additional two (2) of the proposed frameworks have been completed and published. These are as follows:

- Land Mobile Radio Service
- Maritime Mobile Radio Service

These two frameworks along with the Aeronautical Mobile Service framework represent the last frameworks bringing to a closure the framework project. However it must be highlighted that all the frameworks will have to be revised as the need arises in order to maintain their currency and relevance to stakeholders.

### **8.1.2 Public Education**

The Commission's website is being constantly updated to ensure that its content remains current and to provide the best possible information to the public. The Commission is investigating other options in order to increase the public awareness of its existence, its role and responsibilities. The education campaign will also focus on enlightening the St. Lucian public on the other requirements and provisions of the Telecommunications Act.

### **8.1.3 Amateur Radio Operations**

Although the *Framework for Amateur Radio Operations in Saint Lucia* was finalised within the first quarter of 2006, the absence of functioning Amateur Radio Clubs has meant that the Commission has had to assume all of the responsibilities for the certification of Amateur Radio Users, which would have normally been done by the amateur fraternity. To that end the Commission had finalized and publish syllabi for the different classes of amateur radio operators to provide guidance to those who wish to pursue the certification process.

The Commission received notice of the reconstitution of the St. Lucia Amateur Radio Club and therefore looks forward to working with it and other clubs that may come forth in order to address concerns of amateur radio operators.

### **8.1.4 Spectrum Monitoring**

In the previous Annual Report it was indicated the MMS vehicle was receiving attention from ECTEL's Technical Team due to equipment failure. Though the primary fault was partly remedied, it was observed that not all the components of the monitoring system were functional. However the repair carried out on the MMS did facilitate the resumption of monitoring exercises under specific conditions. The difficulty in rectifying the fault being encountered with the MMS is due largely to use of legacy equipment, which makes repairs very costly and time consuming and upgrading of the system almost impossible.

The Commission, cognizant of the deployment of networks utilizing newer digital radio technologies and the incapability of the MMS to adequately monitor the newer digital radio technologies, decided to engage ECTEL in order to acquire new equipment to supplement the MMS as well as in seeking assistance in training for its personnel. The Commission proposed a capital expenditure budget to cover the cost of obtaining the new equipment. However ECTEL denied most of the Capital Expenditure Budget but approved a sum of EC \$3 767.00 for purchase of small items/equipment.

### **8.1.5 Standards Development**

Pursuant to section 12 of the Act, the Commission developed the following technical standards:

- Technical Standards for Maritime Mobile Radio
- Technical Standards for Aeronautical Radio
- Technical Standards for Amateur Radio
- Technical Standards for Land Mobile Radio
- Technical Standards for Citizens Band Radio
- Technical Standards for Family Radio

These standards have all been drafted, placed in public consultation and finally published on the Commission's website.

### **8.1.6 Radio Communications Infrastructure at Moule-a-Chique High Site**

Due to the reports of radio frequency interference emanating from transmitters placed at the Moule-a-Chique high site, the Commission decided to actively engage the radio service operators to adequately address the incidence of radio

frequency interference as well as remedy the deteriorating state of radio communications equipment at the high-site.

The Commission organized a meeting with radio service operators, agencies and other interested persons on May 29, 2008 to discuss the state of the radio communications infrastructure. The venue was the conference room of the Ministry of Communications, and the meeting was well attended. There was a commitment by participants to follow through with a site inspection of the radio communications facilities at Moule-a-Chique.

The site inspection conducted by officers of the Commission with the assistance of the operators, at the high-site at Moule-a-Chique occurred on June 10, 2008. Representatives of most radio service operators were present and facilitated access to the facilities. As a result of the inspection, a detailed course of action for the rehabilitation of the radio communications infrastructure was formulated. In the coming year it is hoped that this recommended course of action can be implemented.

### **8.1.7 Frequency Audit of the Land Mobile Radio Service**

The frequency audit of the Land Mobile Radio (LMR) Service was necessary in order to obtain a greater detail of the current environment of the LMR service and to ensure that the LMR operators comply with the requirements of the Telecommunications Act. The audit also sought to consolidate the records of the Commission with the former agency with responsibility for spectrum management, the Ministry, as well as provide persons who were authorized to operate land mobile equipment under the Wireless Telegraphy Ordinance to regularize and legitimize their operations as required under the Act.

The audit involved two phases: the first was a survey of LMR operators to obtain the relevant information as well as inspection and verification of equipment details and the second phase involved consolidating and updating

the records of the Commission. The first phase will be completed soon and it is hoped that the second phase will begin in the coming year.

## 8.2 Work Plan Schedule for 2008/2009

Presented below are the activities that are earmarked for action during the period October 2008 to September 2009.

PROJECT & GENERAL TASKS	STATUS & COMMENTS
<p><b>Amateur Radio Operations</b></p> <ul style="list-style-type: none"> <li>• Establish certification scheme for prospective amateur radio operators</li> <li>• Licence new amateur radio operators</li> <li>• Call sign database to be established</li> <li>• Revise framework to reflect international standards</li> </ul>	<p><b>In Progress</b></p> <p><i>Work has been completed on the syllabi for Amateur Radio Service and the certification scheme will proceed based on the framework and syllabi. The process of licensing of amateur radio operators is being formulated.</i></p>
<p><b>Aeronautical Mobile Radio Operators</b></p> <ul style="list-style-type: none"> <li>• Preparation of a Draft Framework for operations in Saint Lucia</li> </ul>	<p><b>In progress</b></p> <p><i>The framework is in public consultation.</i></p>
<p><b>Spectrum Monitoring</b></p> <ul style="list-style-type: none"> <li>• Continue monitoring exercise</li> <li>• Revise database</li> <li>• Determine and execute follow-up action to be taken for identified breaches</li> </ul>	<p><b>In progress</b></p> <p><i>Ongoing.</i></p>
<p><b>Frequency Audit of Land Mobile Service</b></p> <ul style="list-style-type: none"> <li>• Conduct surveys of LMR operators to update records</li> <li>• Consolidation and update of records</li> </ul>	<p><b>In progress</b></p> <p><i>First phase is completed</i></p>
<p><b>Sector Procedures Manual</b></p> <ul style="list-style-type: none"> <li>• Update existing modules</li> <li>• Develop additional modules</li> </ul>	<p><b>To begin</b></p> <p><i>Awaiting completion of ECTEL's legislative review to commence this task.</i></p>
<p><b>Public Education</b></p>	<p><b>Ongoing</b></p>

5.3	Appointments .....	15
5.3.1	Position of Coordinator .....	15
5.3.2	Position of Legal Officer/Secretary to the Commission .....	15
5.3.3	Position of Technical Assistant.....	15
5.3.4	Position of Office Information Clerk .....	15
5.3.5	Temporary Staff.....	16
5.4	Training & Professional Development .....	16
5.4.1	National Consultative Workshop on e-Laws .....	16
5.4.2	ECTEL's Numbering Plan Workshop .....	16
5.4.3	ECTEL's ICT Pilot Project Workshop .....	17
6	Financial Review .....	18
6.1	Summary of Income Inflows and Usage.....	18
6.2	Financial Audit Report.....	19
6.3	End of Cap on ECTEL's Disbursement to NTRCs .....	20
7	Other Sector Issues .....	21
7.1	Public Consultations .....	21
7.2	Quality of Service Reports.....	22
7.3	Expiration of Price Cap Plan .....	23
7.4	Update on Numbering Resource.....	23
8	2007/2008 Work Programme.....	24
8.1	Update on 2007/2008 Work Plan .....	24
8.1.1	Frameworks .....	25
8.1.2	Public Education.....	25
8.1.3	Amateur Radio Operations .....	26
8.1.4	Spectrum Monitoring .....	26
8.1.5	Standards Development .....	27
8.1.6	Radio Communications Infrastructure at Moule-a-Chique High Site .....	27



PROJECT & GENERAL TASKS	STATUS & COMMENTS
<ul style="list-style-type: none"> <li>• Continue update of website to remain current</li> <li>• Investigate and implement additional campaigns within the resources of the Commission</li> <li>• Conduct a series of education based campaign to inform the general public of the duties of the Commission and the rights of stakeholders</li> </ul>	<p><i>Ongoing</i></p> <p><i>To begin</i></p> <p><i>Ongoing</i></p>
<p><b>Clean up Module-à-Chique Site</b></p> <ul style="list-style-type: none"> <li>• Undertake an exercise to ensure that all broadcast operators equip their transmitters with filters</li> <li>• Undertake an exercise to ensure all receivers will require interference protection</li> <li>• Development of Guidelines with stakeholders for maintenance of telecommunications infrastructure</li> </ul>	<p><b>Ongoing</b></p> <p><i>Presently ongoing. Time estimate for completion of the project is dependent on the willing cooperation of broadcast operators.</i></p>
<p><b>Numbering Register</b></p> <ul style="list-style-type: none"> <li>• Prepare a Numbering Resource Register to post on website</li> </ul>	<p><b>To begin</b></p>
<p><b>Preparation of Technical Standards-Broadcast Networks</b></p> <ul style="list-style-type: none"> <li>• Develop set of standards with respect to broadcast network categories</li> </ul>	<p><b>To begin</b></p>
<p><b>Re-establishment of Link between Office of Director of Public Prosecution (DPP) and Police Force</b></p> <ul style="list-style-type: none"> <li>• Undertake a series of meetings with representatives of the DPP and Police Force to discuss the prosecuting of offenders who breach the Act</li> </ul>	<p><b>Ongoing</b></p> <p><i>Awaiting availability of officials from the offices of the DPP and Police Force to continue this task.</i></p>
<p><b>Revision of Staff Rules</b></p> <ul style="list-style-type: none"> <li>• Revise and update staff rules to reflect the organisation structure and any new national labour code</li> </ul>	<p><b>Ongoing</b></p>
<p><b>Development of Proposal for salary adjustment</b></p>	<p><b>Ongoing</b></p>

PROJECT & GENERAL TASKS	STATUS & COMMENTS
<ul style="list-style-type: none"> <li>Develop a mechanism for salary adjustments for members of staff</li> </ul>	
<p><b>Type Approval-Development of Mechanism to Deal with first time approval applications</b></p> <ul style="list-style-type: none"> <li>Develop a document to provide stakeholders guidance on the process for first time type approval</li> </ul>	<p><b>To begin</b></p>

*Table 8.2: Work Plan Schedule for 2008/2009*

## Final Remarks

The Telecommunications environment in Saint Lucia is in the process of transition from a once monopolized market into a competition based market with a number of operators offering various services; and it is universally accepted that a competitive telecommunications marketplace is one of the most effective means of ensuring a sustained, long-term trend towards reduced costs, increased quality and expanded access to the telecommunications services. Cognizant of this, the Commission is resolved in providing the necessary oversight to ensure that market liberalization goes unimpeded and that benefits are shared by all. In the coming year it is hopeful that the Universal Service Obligations can be launched and will provide added benefits especially to those sectors of the population that have been marginalized from the technological process. The Commission, having finalized the last of its public documents on key telecommunications sector issues, is investing its energies and efforts into a comprehensive public education campaign directed at the general public. It is hoped that in the coming year that this initiative can be realized.

Whilst this report attempts to detail the main efforts of the Commission in regulating the telecommunications sector and highlights some of the successes in this regard, it is also imperative that some of the deficiencies identified in previous reports and reiterated in this one, which continue to hamper its efforts be addressed by the relevant agencies.

**Blank Page**

# **APPENDIX A:**

## **Telecommunications Licences that have been Issued, Modified, Renewed or Revoked in Saint Lucia**

## **Telecommunications Licences that have been Issued, Modified, Renewed or Revoked in Saint Lucia**

*as at September 30, 2008*

Pursuant to sub-section 14(7)(a) of the Telecommunications Act, No. 27 of 2000 and in keeping with its records, the National Telecommunications Regulatory Commission hereby lists the telecommunications licences that have been issued, modified, renewed or revoked in Saint Lucia by the Minister, as at September 30, 2008

### **Telecommunications Licences Issued**

- (i) For the Establishment and Operation of a Fixed Public Telecommunications Network and the Provision of Certain Fixed Public Telecommunications Services in Saint Lucia

<b>Licensee</b>	<b>Date Issued</b>
Cable & Wireless (West Indies) Limited	October 11 <sup>th</sup> , 2001
Digicel (St. Lucia) Limited	April 17 <sup>th</sup> , 2008
Kelcom International	April 17 <sup>th</sup> , 2008
Tele (St. Lucia) Limited	June 24 <sup>th</sup> , 2008

- (ii) For the Establishment and Operation of a Public Cellular Mobile Telecommunications Network and the Provision of Public Cellular Mobile Telecommunications Services in Saint Lucia

<b>Licensee</b>	<b>Date Issued</b>
Cable & Wireless Caribbean Cellular (St. Lucia) Limited	October 11 <sup>th</sup> , 2001
Digicel (St. Lucia) Limited	September 6 <sup>th</sup> , 2002

Wireless Ventures (St. Lucia) Limited, transferred from AWS Caribbean Holdings Limited <sup>1</sup>	September 10 <sup>th</sup> , 2006
21 <sup>st</sup> Century Telecoms Network (Caribbean) Ltd.	December 18 <sup>th</sup> , 2007

- (iii) For the Installation and Operation of an Internet Network and the Provision of Internet Services in Saint Lucia

<b>Licensee</b>	<b>Date Issued</b>
Cable & Wireless (West Indies) Limited	October 11 <sup>th</sup> , 2001
Antilles Crossing (St. Lucia) Limited	April 22 <sup>nd</sup> , 2006
Link Technologies Limited	February 15 <sup>th</sup> , 2007
21 <sup>st</sup> Century Telecoms Network (Caribbean) Ltd.	December 17 <sup>th</sup> , 2007
Link Technologies Limited	February 15 <sup>th</sup> , 2008
Kelcom International	April 17 <sup>th</sup> , 2008
Digicel (St. Lucia) Limited	April 17 <sup>th</sup> , 2008
Tele (St. Lucia) Limited	June 19 <sup>th</sup> , 2008

- (iv) For the Landing of a Submarine Cable and the Establishment and Operation of a Submarine Cable Telecommunications Network and the Provision of Certain Telecommunications Services in Saint Lucia

<b>Licensee</b>	<b>Date Issued</b>
Antilles Crossing (St. Lucia) Limited	February 2 <sup>nd</sup> , 2005
Southern Caribbean Fibre Limited	August 2, 2007

<sup>1</sup> Minister approved that transfer of the licence on February 6<sup>th</sup>, 2003.

- (v) For the Provision of Full Internet Services in Saint Lucia

<b>Licensee</b>	<b>Date Issued</b>
Almus McDowall (NETEL)	February 12 <sup>th</sup> , 2003
Advanced Network Associates	February 18 <sup>th</sup> , 2003

- (vi) For the Provision of Restricted Internet Services in Saint Lucia

<b>Licensee</b>	<b>Date Issued</b>
Flo Internet Services	January 8 <sup>th</sup> , 2003

- (vii) For the Resale of International Switched Minutes in Saint Lucia

<b>Licensee</b>	<b>Date Issued</b>
NCIC (Saint Lucia) Inc.	October 28 <sup>th</sup> , 2003
Global Link (St. Lucia) Limited	November 21 <sup>st</sup> , 2003
NETEL	December 5 <sup>th</sup> , 2003
CARINET Incorporated	January 10 <sup>th</sup> , 2006

- (viii) For the Establishment and Operation of a Private Telecommunications Network and Services in Saint Lucia

<b>Licensee</b>	<b>Date Issued</b>
Helen IT Systems	July 27 <sup>th</sup> , 2004
FINMAN Information Technology Unit	September 22 <sup>nd</sup> , 2004



- (ix) For the Use of Radio Frequencies in Connection with the Operation of Certain Telecommunications Networks and the Provision of Certain Telecommunications Services in Saint Lucia

<b>Licensee</b>	<b>Date Issued</b>
Cable & Wireless (West Indies) Limited	October 11 <sup>th</sup> , 2001
Cable & Wireless Caribbean Cellular (St. Lucia) Limited	October 11 <sup>th</sup> , 2001
Link Technologies Limited	February 15 <sup>th</sup> , 2007
Helen Television Systems Limited	February 2 <sup>nd</sup> , 2007
Hit Radio Limited	June 4 <sup>th</sup> , 2007
Hot FM Communications	September 11 <sup>th</sup> , 2008
Rhythm FM	September 11 <sup>th</sup> , 2008
Southern Broadcasting Services	September 11 <sup>th</sup> , 2008
Antilles Crossing (St. Lucia) Limited	September 11 <sup>th</sup> , 2008

- (x) Special Licence for the Establishment and Operation of Telecommunications Networks and the Provision of Telecommunications Services in Saint Lucia

<b>Licensee</b>	<b>Date Issued</b>
Cable & Wireless (West Indies) Limited	October 1 <sup>st</sup> , 2001

- (xi) Special Licence for Land Mobile Radio and Frequency Authorisation for Operation in Saint Lucia

<b>Licensee</b>	<b>Date Issued</b>
Discovery at Marigot Bay Limited	December 1 <sup>st</sup> , 2006

**Telecommunications Licences Modified**

*As of September 30<sup>th</sup>, 2008, no licences have been modified.*

**Telecommunications Licences Renewed**

*As of September 30<sup>th</sup>, 2008, no licences have been renewed.*

**Telecommunications Licences Revoked**

*As of September 30<sup>th</sup>, 2008, no licences have been revoked.*

.....  
*ELMA GENE ISAAC*  
*Chairperson*

8.1.7 Frequency Audit of the Land Mobile Radio Service .....	28
8.2 Work Plan Schedule for 2008/2009 .....	29
9 Final Remarks .....	32

## Appendices

- Appendix A: List of the Telecommunications Licences that have been Issued, Modified, Renewed or Revoked in Saint Lucia
- Appendix B: Register of Type-Approved Equipment
- Appendix C: Register of Dealers and Suppliers of Terminal Equipment and Related Services
- Appendix D: List of Telecommunications Rates that are in effect in Saint Lucia
- Appendix E: Diary of Key Events
- Appendix F: Financial Audit Report
- Appendix G: 2007/2008 Work Plan Schedule

# Appendix B:

## Register of Type Approval Equipment

as up to 30<sup>th</sup> September, 2008

National Telecommunications Regulatory Commission  
Saint Lucia

## 1. Type Approved Equipment Ordered by Certificate Number

Certificate No.	Manufacturer	Equipment Identification	Equipment Type	Model Identifier	Date Granted
LCT/DE05.0000	Colubris Networks Inc.	MultiService Access Point - Outdoor	Wireless LAN	MAP-320R	December 15, 2005
LCT/DE05.0001	Colubris Networks Inc.	MultiService Gateway	Wireless LAN	MGW-1250	December 15, 2005
LCT/DE05.0002	Colubris Networks Inc.	MultiService Access Point - Indoor	Wireless LAN	MSC-3300	December 15, 2005
LCT/DE05.0003	Colubris Networks Inc.	MultiService Access Point - Indoor	Wireless LAN	MSC-3200	December 15, 2005
LCT/DE05.0004	Colubris Networks Inc.	MultiService Access Point - Indoor	Wireless LAN	MAP-320	December 15, 2005
LCT/DE05.0005	Colubris Networks Inc.	MultiService Access Point - Indoor	Wireless LAN	MAP-330	December 15, 2005
LCT/DE05.0006	Colubris Networks Inc.	MultiService Controller - Outdoor	Wireless LAN	MSC-3200R	December 15, 2005
LCT/DE05.0007	Kirk Telecom	Digital Mobility Handset 7434 - SAM Unit	Digital Mobility System	NT7B80AC	December 15, 2005
LCT/DE05.0008	Kirk Telecom	Digital Mobility Base Station 14 - SAM Unit	Digital Mobility System	NT7B80AE	December 15, 2005
LCT/DE05.0009	Kirk Telecom	Digital Mobility Repeater 24	Digital Mobility System	NT7B80AF	December 15, 2005
LCT/DE05.000A	Kirk Telecom	2.4 GHz Communications System	Digital Mobility System	PP4-2G4	December 15, 2005
LCT/DE05.000B	Kirk Telecom	2.4 GHz Communications System	Digital Mobility System	RFP4-2G4	December 15, 2005
LCT/DE05.000C	Kirk Telecom	2.4 GHz Communications System	Digital Mobility System	WRFP4-2G4	December 15, 2005
LCT/DE05.000D	Intel Corporation	Intel Pro/Wireless Network Connection	Wireless LAN	WM3B2915ABG	December 15, 2005
LCT/DE05.000E	Intel Corporation	Intel Pro/Wireless Network Connection	Wireless LAN	WM3A2915ABG	December 15, 2005

Certificate No.	Manufacturer	Equipment Identification	Equipment Type	Model Identifier	Date Granted
LCT/DE05.000F	IBM	Printer Toner Monitoring and Control (Infoprint Color 1567)	Radio Frequency Identification Device	4935-n02	December 15, 2005
LCT/DE05.0010	Lexmark International Inc.	Printer Toner Monitoring and Control (C920dn)	Radio Frequency Identification Device	5056-030	December 15, 2005
LCT/DE05.0011	Fuji Xerox Corporation Limited	Toner Cartridge Identification and Monitoring System	Radio Frequency Identification Device	KDRF	December 15, 2005
LCT/DE05.0012	IBM	Printer Toner Monitoring and Control (Infoprint Color 1567)	Radio Frequency Identification Device	4935-dn2	December 15, 2005
LCT/DE05.0013	Lexmark International Inc.	Printer Toner Monitoring and Control (C920)	Radio Frequency Identification Device	5056-000	December 15, 2005
LCT/DE05.0014	Lexmark International Inc.	Printer Toner Monitoring and Control (C920n)	Radio Frequency Identification Device	5056-010	December 15, 2005
LCT/DE05.0015	Lexmark International Inc.	Printer Toner Monitoring and Control (C920dtr)	Radio Frequency Identification Device	5056-030	December 15, 2005
LCT/DE05.0016	Lear Corporation	RKE/TPM 315 MHz Receiver	Automotive Security/Convenience Receiver	FR04U204	December 15, 2005
LCT/DE05.0017	Lear Corporation	Lear Ford Ranger 315 MHz RKE/TPM Receiver	Automotive Security/Convenience Receiver	FR06U251	December 15, 2005
LCT/DE05.0018	Lear Corporation	Tyre Pressure Monitor Sensor	Telemetry Apparatus	7C2A-1A176	December 15, 2005
LCT/DE05.001A	Delphi Delco Electronic Systems	RKE/TPM 315 MHz Receiver	Security/Convenience Receiver	SJB S197-06	December 15, 2005
LCT/DE05.001B	Delphi Delco Electronic Systems	RKE/TPM 315 MHz Receiver	Security/Convenience Receiver	SJB V229-06	December 15, 2005
LCT/DE05.001C	Delphi Delco Electronic Systems	RKE/TPM 315 MHz Receiver	Security/Convenience Receiver	SJB S197	December 15, 2005
LCT/DE05.001D	Delphi Delco Electronic Systems	RKE/TPM 315 MHz Receiver	Security/Convenience Receiver	SJB V229	December 15, 2005
LCT/DE05.001E	Mitsubishi Electric Corporation, Himeji Works	Immobiliser System	Vehicle Security System	IMB122-01	December 15, 2005
LCT/DE05.001F	Omron Corporation	Keyless Entry System for Vehicles (Transmitter)	Vehicle Radio Keys	G8D-380H-A	December 15, 2005
LCT/DE05.0020	Omron Corporation	Keyless Entry System for Vehicles (Receiver)	Vehicle Radio Keys	G8D-390H-3B	December 15, 2005

Annual Report of the Commission for period, 1<sup>st</sup> October 2007 – 30<sup>th</sup> September 2008

Certificate No.	Manufacturer	Equipment Identification	Equipment Type	Model Identifier	Date Granted
LCT/DE05.0021	Delphi Automotive Systems	RKE/TPM 315 MHz Receiver	Security/Convenience Receiver	GMT 345/15270437	December 15, 2005
LCT/DE05.0022	Visteon Corporation	Visteon Rbuster Receiver	Receiver	6W7T-14B207-A	December 15, 2005
LCT/DE05.0023	Visteon Corporation	Visteon Rbuster Receiver	Receiver	6W1T-14B207-A	December 15, 2005
LCT/DE05.0024	Visteon Corporation	Visteon Rbuster Receiver	Receiver	6W1T-15K602-A	December 15, 2005
LCT/DE05.0025	Lite-On Technology Corporation	14.4 Kbps Fax/56 Kbps Interface Modem	Modem	D-11561 # / A1A	December 15, 2005
LCT/DE05.0026	Symbol Technologies Inc.	Bluetooth Ring Scanner	Transceiver Bluetooth Device	CRS-1	December 15, 2005
LCT/DE05.0027	Symbol Technologies Inc.	Handheld Data Terminal	Transceiver	4121GPRS	December 15, 2005
LCT/DE05.0028	Symbol Technologies Inc.	Handheld Data Terminal	Transceiver	41210000	December 15, 2005
LCT/DE05.0029	OMRON Automotive Electronics Inc.	315 MHz Integrated Key Transmitter (IKT)	Vehicle Security System	D6000022	December 15, 2005
LCT/DE05.002A	OMRON Automotive Electronics Inc.	134.2 KHz Passive Anti-Theft System Transceiver (PAT)	Vehicle Security System	D7520013	December 15, 2005
LCT/FB06.002B	Fuji Xerox Corporation Limited	Passive Transponder Reader for Toner Cartridge	Radio Frequency Identification Device	LEFX	February 28, 2006
LCT/FB06.002C	Nortel Networks	Dual Band Access Point	Wireless LAN	2330	February 28, 2006
LCT/FB06.002D	Logitech Far East Ltd.	Bluetooth Keyboard	Bluetooth Device	Y-RAQ-DEL2	February 28, 2006
LCT/FB06.002E	Logitech Far East Ltd.	Bluetooth Mouse	Bluetooth Device	M-RBB-DEL4	February 28, 2006
LCT/MR06.002F	Logitech Far East Ltd.	Bluetooth Dongle	Bluetooth Device	C-UV35	March 30, 2006
LCT/AP06.0030	Toshiba TEC Corporation	Bluetooth Transmitter Module	Bluetooth Device	TEC-BTM-R	April 27, 2006
LCT/JN06.0031	Siemens VDO Automotive AG	Vehicle Immobilizer System	Vehicle Security System	5WK49181	June 29, 2006
LCT/JN06.0032	Siemens VDO Automotive AG	Vehicle Immobilizer System	Vehicle Security System	5WK49182	June 29, 2006

Certificate No.	Manufacturer	Equipment Identification	Equipment Type	Model/Identifier	Date Granted
LCT/JN06.0033	OMRON Automotive Electronics Inc.	Integrated Key Transmitter (IKT)	Vehicle Security System	6U5T-19H136	June 29, 2006
LCT/JL06.0034	Visteon Japan Ltd.	Keyless Entry System for Vehicles (Transmitter)	Vehicle Radio Keys	TX41835	July 20, 2006
LCT/JL06.0035	Motorola AIEG	SPDJIB Receiver	Receiver	A	July 20, 2006
LCT/JL06.0036	Motorola AIEG	SPDJIB Receiver	Receiver	B	July 20, 2006
LCT/JL06.0037	Motorola AIEG	SPDJIB Receiver	Receiver	C	July 20, 2006
LCT/JL06.0038	Intermec Technologies Corporation	Mobile Computer	Transceiver	700C	July 20, 2006
LCT/OC06/0039	Matsushita Electric Industrial Co., Ltd	Notebook Computer (Brand Name: Panasonic)	Personal Computer w/ Bluetooth, WLAN card + Modem	CF-18	October 16, 2006
LCT/OC06.003A	Siemens VDO Automotive AG	Vehicle Immobilizer System	Vehicle Security System	5WY7975	October 16, 2006
LCT/FB07.003B	CAS Munchen GmbH	In-Vehicle Bluetooth Module	Bluetooth Device	TCU 1.5 ECE	February 8, 2007
LCT/FB07.003C	Delphi Automotive Systems	VN127 BSM Receiver	Security/Convenience Receiver	L2C0025R	February 8, 2007
LCT/FB07.003D	ALPS Automotive Incorporated	Remote Keyless Entry Transmitter	Vehicle Security System	8S4T-15K601-A	February 8, 2007
LCT/FB07.003E	ALPS Automotive Incorporated	Remote Keyless Entry Transmitter	Vehicle Security System	8L3T-15K601-A	February 8, 2007
LCT/FB07.003F	Omron Corporation	Keyless Entry System for Vehicles (Receiver)	Vehicle Radio Keys	G8D-344H-3B	February 8, 2007
LCT/FB07.0040	ALPS Automotive Incorporated	Remote Keyless Entry System for Vehicles	Vehicle Radio Keys	2L2T-15K601-B	February 8, 2007
LCT/FB07.0041	ALPS Automotive Incorporated	Remote Keyless Entry System for Vehicles	Vehicle Radio Keys	2S4T-15K601-A	February 8, 2007
LCT/FB07.0042	ALPS Automotive Incorporated	Remote Keyless Entry System for Vehicles	Vehicle Radio Keys	2L3T-15K601-A	February 8, 2007
LCT/FB07.0043	ALPS Automotive Incorporated	Remote Keyless Entry System for Vehicles	Vehicle Radio Keys	3L7T-15K601-A	February 8, 2007

Annual Report of the Commission for period, 1<sup>st</sup> October 2007 – 30<sup>th</sup> September 2008



Certificate No.	Manufacturer	Equipment Identification	Equipment Type	Model Identifier	Date Granted
LCT/FB07.0044	ALPS Automotive Incorporated	Remote Keyless Entry System for Vehicles	Vehicle Radio Keys	3F2T-15K601-A	February 8, 2007
LCT/FB07.0045	ALPS Automotive Incorporated	Remote Keyless Entry System for Vehicles	Vehicle Radio Keys	4F2T-15K601-A	February 8, 2007
LCT/FB07.0046	Nintendo of America Inc.	Nintendo Wii Gaming Console	Digital Communications System	RVL-001	February 8, 2007
LCT/FB07.0047	Nintendo of America Inc.	Nintendo Wii Remote Control	Bluetooth Device	RVL-003	February 8, 2007
LCT/MR07.0048	Valeo Sécurité Habitable	Receiver / Immobilizer	Vehicle Security System	S0044-A	March 28, 2007
LCT/MR07.0049	Valeo Sécurité Habitable	Transmitter for Vehicle Remote Keyless Entry System	Vehicle Security System	S0084-A	March 28, 2007
LCT/MR07.004A	Visteon Deutschland GmbH	Vehicle Immobiliser System	Vehicle Immobiliser System	PATS XCVR	March 28, 2007
LCT/MY07.004B	Lear Corporation	Tyre Pressure Monitoring System Receiver	Telemetry Apparatus	FR07U204	May 24, 2007
LCT/MY07.004C	Lear Corporation	Onboard Automobile Security/Convenience Receiver	Automotive Security/Convenience Receiver	FR07P150	May 24, 2007
LCT/MY07.004D	Siemens AG, Siemens VDO Automotive	Remote Keyless Entry System for Vehicle	Vehicle Key Radio Transmitter	5WK4 9542	May 24, 2007
LCT/JL07.004E	ALPS Automotive Incorporated	Remote Keyless Entry Transmitter	Vehicle Radio Keys	TFWB1U721	July 2, 2007
LCT/JL07.004F	Aruba Networks Inc.	Wireless Network Access Point	Digital Transmission System	AP61	July 2, 2007
LCT/JL07.0050	Aruba Networks Inc.	Wireless Network Access Point	Digital Transmission System	AP65	July 2, 2007
LCT/JL07.0051	Aruba Networks Inc.	Wireless Network Access Point	Digital Transmission System	AP70	July 2, 2007
LCT/JL07.0052	Aruba Networks Inc.	Wireless Network Access Point	Digital Transmission System	AP-80M	July 2, 2007
LCT/JL07.0053	Aruba Networks Inc.	Wireless Network Access Point	Digital Transmission System	AP-80MB	July 2, 2007
LCT/JL07.0054	Aruba Networks Inc.	Wireless Network Access Point	Digital Transmission System	AP-80SB	July 2, 2007

Certificate No.	Manufacturer	Equipment Identification	Equipment Type	Model/Identifier	Date Granted
LCT/JL07.0055	Aruba Networks Inc.	Wireless Network Access Point	Digital Transmission System	AP60	July 2, 2007
LCT/JL07.0056	ALPS Automotive Incorporated	Remote Keyless Entry Transmitter	Vehicle Radio Keys	TFWB1U722	July 2, 2007
LCT/JL07.0057	Motorola Automotive (Continental Automotive Systems)	Bluetooth Module	Bluetooth Transceiver	BPM	July 30, 2007
LCT/JL07.0058	Lear Corporation	Vehicular Radio Communications Receiver	Vehicular Radio Communications Receiver	KOBF08SPDJB	July 30, 2007
LCT/JL07.0059	Visteon Deutschland GmbH	Passive Anti-theft System	Vehicle Security System	PATS XCVR VP2S6F-15607-B	July 30, 2007
LCT/NO07.005A	Siemens AG, Siemens VDO Automotive	Vehicle Immobilizer System	Vehicle Immobiliser System	5WK49215	November 22, 2007
LCT/FEB08.005B	Delphi Automotive Systems	Delphi SJB Receiver	Security/Convenience Receiver	28093678	February 18, 2008
LCT/FEB08.005C	Delphi Automotive Systems	Delphi SJB Receiver	Security/Convenience Receiver	28093680	February 18, 2008
LCT/FEB08.005D	Delphi Automotive Systems	Delphi SJB Receiver	Security/Convenience Receiver	28093683	February 18, 2008
LCT/FEB08.005E	Delphi Automotive Systems	Delphi SJB Receiver	Security/Convenience Receiver	28093682	February 18, 2008
LCT/JN08.005F	Siemens VDO Automotive AG	Vehicle Immobilizer System	Radio Frequency Transmitter used in tire pressure monitoring system	5WY7635	January 30 <sup>th</sup> , 2008
LCT/FEB08.0060	Schrader Electronics Limited	Low Frequency Transmitter for Tyre Pressure Monitor Sensor	Telemetry Apparatus	8C2T-1A203-AB	February 18 <sup>th</sup> , 2008
LCT/FEB08.0061	Siemens AG, Siemens VDO Automotive	Vehicle Immobilizer	Vehicle Security System	5WY7703	February 18 <sup>th</sup> , 2008
LCT/APR08.0062	ALPS Electronics Co. Limited	Intelligent Key System	Vehicle Security System	TFW1J471A	April 14 <sup>th</sup> , 2008
LCT/APR08.0063	Johnson Controls Automotive Electronics	Ignition Immobiliser	Vehicle Security System	MW1014	April 14 <sup>th</sup> , 2008
LCT/MAY08.0064	Nintendo of America Inc.	Nintendo Wii Fit	Bluetooth Device	RVL-021	May 28 <sup>th</sup> , 2008

Annual Report of the Commission for period, 1<sup>st</sup> October 2007 – 30<sup>th</sup> September 2008

Certificate No.	Manufacturer	Equipment Identification	Equipment Type	Model Identifier	Date Granted
LCT/JUL08.0065	Honda Lock Mfg Co. Ltd	Integrate Immobilizer system with RKE	Transceiver for Keyless System	HL1K-1R	July 30 <sup>th</sup> , 2008
LCT/JUL08.0066	Honda Lock Mfg Co. Ltd	Integrate Immobilizer system with RKE	Transmitter for Keyless System	HL1K-1T	July 30 <sup>th</sup> , 2008
LCT/SEP08.0067	Schrader Electronics Limited	Tire Pressure Transmitter	Telemetry Apparatus	FS1MAF4	September 24 <sup>th</sup> , 2008
LCT/SEP08.0068	Omron Automotive Electronics Group	PATS Immobilizer	Vehicle Security system	OUCD7520013	September 24 <sup>th</sup> , 2008
LCT/SEP08.0069	Continental Automotive System	SYNC Automotive Gateway	Bluetooth Device	F10MG10903	September 24 <sup>th</sup> , 2008

*Annual Report of the Commission for period, 1<sup>st</sup> October 2007 – 30<sup>th</sup> September 2008*

## **APPENDIX C:**

### **Register of Dealers and Suppliers of Terminal Equipment and Related Services**

## APPENDIX C

### Register of Suppliers of Terminal Equipment and Related Services

(sorted by registration date)

Registration Date	Registrant Name	Registration No.
November 10, 2005	Kent's Hi Tech Electronics	LSTE/NO05.0001
December 15, 2005	CLICKCOM	LSTE/NO05.0002
December 15, 2005	Cox Radio Limited	LSTE/NO05.0003
August 31, 2006	CALIDAD Services	LSTE/AU06.0004
August 31, 2006	Communications Systems & Services Ltd.	LSTE/AU06.0005
September 27, 2006	N. V. Commercial Services Limited	LSTE/SP06.0006
September 27, 2006	Icon Security & Private Investigation Services Limited	LSTE/SP06.0007
October 16, 2006	Johnsons Hardware Limited	LSTE/OC06.0008
January 26, 2007	Island Water World (St. Lucia) Limited	LSTE/JA07.0009
March 30, 2007	Phone Links	LSTE/MR07.0010
April 24, 2007	G & G Ltd.	LSTE/AP07.0011

## LIST OF FIGURES AND TABLES

<b>Table 1.1:</b>	Telecommunications data for reporting period	2
<b>Table 2.1:</b>	Comparison of the Telecommunications Licence Fees collected by Inland Revenue Department	6
<b>Table 2.2:</b>	Comparison of the Spectrum Fees collected by ECTEL	7
<b>Table 3.1A:</b>	C&W Residential Broadband Packages	8
<b>Table 3.1B:</b>	C&W Business Broadband Packages	8
<b>Table 3.2:</b>	Approved rate changes in EC\$ for the Direct Internet Access Service	9
<b>Figure 5.2:</b>	Organisational Structure for the Commission	14
<b>Figure 6.2:</b>	Distribution of Expenditure for Fiscal Year 2006/2007 and 2007/2008	19
<b>Figure 8.2:</b>	Work Plan Schedule for 2008/2009	29-31

## ABBREVIATIONS AND ACRONYMS

Act	Telecommunications Act, Saint Lucia, No. 27 of 2000
Commission	Saint Lucia National Telecommunications Regulatory Commission
Contracting States	St. Kitts & Nevis, Dominica, Saint Lucia, St. Vincent & the Grenadines, Grenada
CPW	Customer Premise Wiring
CTU	Caribbean Telecommunications Union
DIA	Dedicated Internet Access

## APPENDIX C

Telecommunications Rates that are in Effect in Saint Lucia

Provider	Product	Type	Prices
<b>CWWI</b>	<b>Basic Fixed Telephony Service</b>		
	Direct Exchange Line Residential	Rental	\$26.40
	Direct Exchange Line Residential	Installation	\$125.00
	Direct Exchange Line Business	Rental	\$48.00
	Direct Exchange Line Business	Installation	\$125.00
	Fixed to Fixed - Day	Minute	\$0.07
	Fixed to Fixed - Night	Minute	\$0.04
	Fixed to Fixed - Weekend	Minute	\$0.04
	Fixed to Mobile - Day	Minute	\$0.71
	Fixed to Mobile - Night	Minute	\$0.69
	Fixed to Mobile - Weekend	Minute	\$0.69
<b>CWWI</b>	<b>Value Added Services (Fixed Line Telephony)</b>		
	SmartChoice Business Plan A	Rental	\$68.00
	SmartChoice Business Plan B	Rental	\$72.00
	SmartChoice Business Plan C	Rental	\$76.00
	SmartChoice Residential Plan	Rental	\$39.40
	SmartChoice Residential Plan (If this is a new line)	Installation	\$125.00
	Exch Feature Call Transfer	Rental	\$8.00
	Exch Feature Customer Controlled Bar Int	Rental	\$8.00
	Exch Feature Hold For Enquiry	Rental	\$8.00
	Exch Feature Hot Line	Rental	\$15.00
	Exch Feature Hot Line	Installation	\$50.00
	Exch Feature Bar IDD	Rental	\$15.00
	Exch Feature Bar IDD	Installation	\$50.00
	Exch Feature Bar FTM - Residential	Rental	\$15.00
	Exch Feature Bar FTM - Business	Rental	\$25.00
	Exch Feature Forwarding/Pager	Rental	\$5.00
	Exch Feature Extended Voicemail/Pager	Rental	\$5.00
	Exch Feature Extended Alphanumeric	Rental	\$5.00
	Exch Feature Group Page Header	Rental	\$10.00
	Exchange Feature Voicemail - Residential	Rental	\$7.00
	Exchange Feature Voicemail - Residential	Installation	\$10.00
	Exchange Feature Voice Mail - Business	Rental	\$15.00
	Exchange Feature Voice Mail - Business	Installation	\$10.00
	Additional Mailbox - Business	Rental	\$5.00
	Additional Mailbox - Business	Installation	\$10.00
	Direct Exchange Line 900	Rental	\$40.00



## APPENDIX D

Provider	Product	Type	Prices
	Ex-directory	listing	\$5.00
	Voice Mail Ultra	Rental	\$25.00
	Voice Mail Ultra	Installation	\$15.00
	Voicemail Family Box	Rental	\$3.00
	Voicemail Family Box	Installation	\$10.00
	Magic Touch Call Fwd/Call Barring	Rental	\$7.00
	Magic Touch Call Waiting/Call Barring	Rental	\$7.00
	Magic Touch Call Barring/Confrence Call	Rental	\$7.00
	Magic Touch Call Fwd/Call Wait/Call Bar.	Rental	\$12.00
	Magic Touch Call Fwd/Conf Call/Call Bar.	Rental	\$12.00
	Magic Touch Call Waiting	Rental	\$8.00
	Magic Touch Conference Calling	Rental	\$8.00
	Magic Touch Call Fwd/Call Wait	Rental	\$7.00
	Magic Touch Call Fwd/Conf Call	Rental	\$7.00
	Magic Touch Call Wait/Conf Call	Rental	\$7.00
	Magic Touch Call Fwd/Call Wait/Conf Call	Rental	\$12.00
	Magic Touch Call Barring	Rental	\$8.00
	Magic Touch Call Forwarding	Rental	\$8.00
	Magic Touch Caller ID	Rental	\$9.00
	Magic Touch Caller ID w/Add-on Display	Rental	\$16.00
	Magic Touch Call Return	Rental	\$8.00
	Magic Touch Single Package	Rental	\$3.00
	Magic Touch Double Package	Rental	\$8.00
	Magic Touch Triple Package	Rental	\$13.00
	Magic Touch Full Package	Rental	\$17.00
	Magic Touch Quad Package	Rental	\$18.00
	Telemax call return	Rental	\$8.00
	Telemax Caller ID (Without Display)	Rental	\$9.00
	Telemax Caller ID with add-on Display	Rental	\$16.00
	Telemax Caller ID with additional Display	Rental	\$10.00
	Telemax Five feature welcome package	Rental	\$20.00
	Ring again	Rental	\$8.00
<b>CWWI</b>	<b>Private Wire (no longer open to new subscribers)</b>		
	Private Wire. 0 - 110 Yds	Rental	\$46.00
	Private Wire 220 - 440 Yds	Rental	\$22.00
	Private Wire 220 - 440 Yds	Installation	\$74.00
	Private Wire 440 - 880 Yds	Rental	\$30.00
	Private Wire 0.50 - 0.75 Miles	Rental	\$38.00
	Private Wire 0.75 - 1.00 Miles	Rental	\$46.00
	Private Wire 1.00 - 1.25 Miles	Rental	\$54.00
	Private Wire 1.25 - 1.50 Miles	Rental	\$62.00

## APPENDIX D

Provider	Product	Type	Prices
	Private Wire 1.50 - 1.75 Miles	Rental	\$70.00
	Private Wire 1.75 - 2.00 Miles	Rental	\$78.00
	Private Wire 2.00 - 2.25 Miles	Rental	\$86.00
	Private Wire 2.25 - 2.50 Miles	Rental	\$94.00
	Private Wire 2.75 - 3.00 Miles	Rental	\$180.00
	Private Wire Different Exchange	Rental	\$180.00
	Private Wire Different Exchange	Installation	\$100.00
	Private Wire Step Charge	Rental	\$8.00
<b>CWWI</b>	<b>Domestic Private Leased Circuit</b>		
	DPLC 28.8k	Rental	\$300.00
	DPLC 28.8k	Installation	\$540.00
	DPLC 64kbit	Rental	\$1,100.00
	DPLC 64kbit	Installation	\$800.00
	DPLC 128kbit	Rental	\$1,980.00
	DPLC 128kbit	Installation	\$800.00
	DPLC 256 Kbps	Rental	\$2,500.00
	DPLC 256 Kbps	Installation	\$1,000.00
	DPLC 512 Kbps	Rental	\$2,980.00
	DPLC 512 Kbps	Installation	\$1,500.00
	DPLC 768 Kbps	Rental	\$3,450.00
	DPLC 768 Kbps	Installation	\$2,000.00
	DPLC 1024 Kbps	Rental	\$3,980.00
	DPLC 1024 Kbps	Installation	\$2,000.00
	DPLC 1.5mbit (T1)	Rental	\$4,200.00
	DPLC 1.5mbit (T1)	Installation	\$2,000.00
	DPLC 2mbit (E1)	Rental	\$4,500.00
	DPLC 2mbit (E1)	Installation	\$2,000.00
<b>CWWI</b>	<b>International Private Leased Circuit</b>		
	IPLC Caribbean 1A 2.4 Kbits (Group 1)	Rental	\$936.00
	IPLC Caribbean 1A 2.4 Kbits (Group 1)	Installation	\$1,350.00
	IPLC Caribbean 1A 4.8 Kbits (Group 1)	Rental	\$1,040.00
	IPLC Caribbean 1A 4.8 Kbits (Group 1)	Installation	\$1,350.00
	IPLC Caribbean 1A 9.6 Kbits (Group 1)	Rental	\$1,170.00
	IPLC Caribbean 1A 9.6 Kbits (Group 1)	Installation	\$1,350.00
	IPLC Caribbean 1A 56/64 Kbits (Group 1)	Rental	\$2,150.00
	IPLC Caribbean 1A 56/64 Kbits (Group 1)	Installation	\$1,350.00
	IPLC 128 kbits Band 1a (Group 1)	Rental	\$3,870.00
	IPLC 128 kbits Band 1a (Group 1)	Installation	\$1,350.00
	IPLC Caribbean 192 Kbits (Group 1)	Rental	\$5,440.00
	IPLC Caribbean 192 Kbits (Group 1)	Installation	\$1,350.00
	IPLC Caribbean 256 kbits Band 1a (Group 1)	Rental	\$6,746.00

**APPENDIX D**

<b>Provider</b>	<b>Product</b>	<b>Type</b>	<b>Prices</b>
	IPLC Caribbean 256 kbits Band 1a (Group 1)	Installation	\$1,350.00
	IPLC 320 Kbits (Group 1)	Rental	\$7,870.00
	IPLC 320 Kbits (Group 1)	Installation	\$1,350.00
	IPLC 384 Kbits (Group 1)	Rental	\$8,843.00
	IPLC 384 Kbits (Group 1)	Installation	\$1,350.00
	IPLC 768 Kbits (Group 1)	Rental	\$12,687.00
	IPLC 768 Kbits (Group 1)	Installation	\$1,350.00
	IPLC 1024 Kbits (Group 1)	Rental	\$14,272.00
	IPLC 1024 Kbits (Group 1)	installation	\$1,350.00
	IPLC 1544 Kbits (Group 1)	Rental	\$17,459.00
	IPLC 1544 Kbits (Group 1)	Installation	\$1,350.00
	IPLC 2048 kbits Band 1a (Group 1)	Rental	\$21,700.00
	IPLC 2048 kbits Band 1a (Group 1)	Installation	\$1,350.00
	IPLC 512 kbits Band 1a (Group 1)	Rental	\$10,437.00
	IPLC 512 kbits Band 1a (Group 1)	Installation	\$1,350.00
	IPLC Caribbean 1A Voicegrade	Rental	\$1,300.00
	IPLC Caribbean 1A Voicegrade	Installation	\$1,350.00
	IPLC Caribbean 1A 2 Mbits	Rental	\$21,700.00
	IPLC All Other 9.6 Kbits	Rental	\$2,080.00
	IPLC All Other 9.6 Kbits	Installation	\$1,350.00
	IPLC 56 Kbits (Group 2)	Rental	\$3,700.00
	IPLC 56 Kbits (Group 2)	Installation	\$1,350.00
	IPLC 64 kbits Band 1b (Group 2)	Rental	\$3,700.00
	IPLC 64 kbits Band 1b (Group 2)	Installation	\$1,350.00
	IPLC Caribbean 1B 128 Kbits (Group 2)	Rental	\$6,660.00
	IPLC Caribbean 1B 128 Kbits (Group 2)	Installation	\$1,350.00
	IPLC 192 Kbits (Group 2)	Rental	\$9,435.00
	IPLC 192 Kbits (Group 2)	Installation	\$1,350.00
	IPLC 256 Kbits (Group 2)	Rental	\$11,699.00
	IPLC 256 Kbits (Group 2)	Installation	\$1,350.00
	IPLC 320 Kbits (Group 2)	Rental	\$13,648.00
	IPLC 320 Kbits (Group 2)	Installation	\$1,350.00
	IPLC 384 Kbits (Group 2)	Rental	\$15,336.00
	IPLC 384 Kbits (Group 2)	Installation	\$1,350.00
	IPLC 512 Kbits (Group 2)	Rental	\$18,100.00
	IPLC 512 Kbits (Group 2)	Installation	\$1,350.00
	IPLC 768 Kbits (Group 2)	Rental	\$22,022.00
	IPLC 768 Kbits (Group 2)	Installation	\$1,350.00
	IPLC 1024 Kbits (Group 2)	Rental	\$24,750.00
	IPLC 1024 Kbits (Group 2)	Installation	\$1,350.00
	IPLC 1544 Kbits (Group 2)	Rental	\$30,276.00
	IPLC 1544 Kbits (Group 2)	Installation	\$1,350.00
	IPLC 2048 Kbits (Group 2)	Rental	\$37,200.00

## APPENDIX D

Provider	Product	Type	Prices
	IPLC 2048 Kbits (Group 2)	Installation	\$1,350.00
	IPLC 56/64 kbits Band 2a (Group 3)	Rental	\$5,600.00
	IPLC 56/64 kbits Band 2a (Group 3)	Installation	\$1,350.00
	IPLC 128 Kbits (Group 3)	Rental	\$10,100.00
	IPLC 128 Kbits (Group 3)	Installation	\$1,350.00
	IPLC 192 Kbits (Group 3)	Rental	\$14,290.00
	IPLC 192 Kbits (Group 3)	Installation	\$1,350.00
	IPLC 256 Kbits Group 3	Rental	\$17,720.00
	IPLC 256 Kbits Group 4	Installation	\$1,350.00
	IPLC 320 Kbits (Group 3)	Rental	\$20,671.00
	IPLC 320 Kbits (Group 3)	Installation	\$1,350.00
	IPLC 384 Kbits (Group 3)	Rental	\$23,227.00
	IPLC 384 Kbits (Group 3)	Installation	\$1,350.00
	IPLC 512 Kbits (Group 3)	Rental	\$27,414.00
	IPLC 512 Kbits (Group 3)	Installation	\$1,350.00
	IPLC 768 Kbits (Group 3)	Rental	\$33,324.00
	IPLC 768 Kbits (Group 3)	Installation	\$1,350.00
	IPLC 1024 Kbits (Group 3)	Rental	\$37,487.00
	IPLC 1024 Kbits (Group 3)	Installation	\$1,350.00
	IPLC 1544 Kbits (Group 3)	Rental	\$45,856.00
	IPLC 1544 Kbits (Group 3)	Installation	\$1,350.00
	IPLC 2048 Kbits (Group 3)	Rental	\$56,200.00
	IPLC 2048 Kbits (Group 3)	Installation	\$1,350.00
	IPLC Caribbean 2B 56/64 Kbits (Group 4)	Rental	\$7,600.00
	IPLC Caribbean 2B 56/64 Kbits (Group 4)	Installation	\$1,350.00
	IPLC 128 Kbits (Group 4)	Rental	\$13,700.00
	IPLC 128 Kbits (Group 4)	Installation	\$1,350.00
	IPLC 192 Kbits (Group 4)	Rental	\$19,352.00
	IPLC 192 Kbits (Group 4)	Installation	\$1,350.00
	IPLC 256 Kbits (Group 4)	Rental	\$23,996.00
	IPLC 256 Kbits (Group 4)	Installation	\$1,350.00
	IPLC 320 Kbits (Group 4)	Rental	\$27,993.00
	IPLC 320 Kbits (Group 4)	Installation	\$1,350.00
	IPLC 384 Kbits (Group 4)	Rental	\$31,455.00
	IPLC 384 Kbits (Group 4)	Installation	\$1,350.00
	IPLC 512 Kbits (Group 4)	Rental	\$37,124.00
	IPLC 512 Kbits (Group 4)	Installation	\$1,350.00
	IPLC 768 Kbits (Group 4)	Rental	\$45,128.00
	IPLC 768 Kbits (Group 4)	Installation	\$1,350.00
	IPLC 1024 Kbits (Group 4)	Rental	\$50,765.00
	IPLC 1024 Kbits (Group 4)	Installation	\$1,350.00
	IPLC 1544 Kbits (Group 4)	Rental	\$62,099.00
	IPLC 1544 Kbits (Group 4)	Installation	\$1,350.00
	IPLC 2048 Kbits (Group 4)	Rental	\$76,200.00

## APPENDIX D

Provider	Product	Type	Prices
	IPLC 2048 Kbits (Group 4)	Installation	\$1,350.00
	IPLC Caribbean 1B Voicegrade	Rental	\$2,160.00
	IPLC Caribbean 1B Voicegrade	Installation	\$1,350.00
	IPLC 56/64 kbits Band 3 (Group 5)	Rental	\$8,100.00
	IPLC 56/64 kbits Band 3 (Group 5)	Installation	\$1,350.00
	IPLC 128 kbits Band 3 (Group 5)	Rental	\$14,864.00
	IPLC 128 kbits Band 3 (Group 5)	Installation	\$1,350.00
	IPLC 192 Kbits (Group 5)	Rental	\$20,660.00
	IPLC 192 Kbits (Group 5)	Installation	\$1,350.00
	IPLC 256 Kbits (Group 5)	Rental	\$25,618.00
	IPLC 256 Kbits (Group 5)	Installation	\$1,350.00
	IPLC 320 Kbits (Group 5)	Rental	\$29,886.00
	IPLC 320 Kbits (Group 5)	Installation	\$1,350.00
	IPLC 384 Kbits (Group 5)	Rental	\$33,583.00
	IPLC 384 Kbits (Group 5)	Installation	\$1,350.00
	IPLC 512 Kbits (Group 5)	Rental	\$39,633.00
	IPLC 512 Kbits (Group 5)	Installation	\$1,350.00
	IPLC 768 Kbits (Group 5)	Rental	\$48,179.00
	IPLC 768 Kbits (Group 5)	Installation	\$1,350.00
	IPLC 1024 Kbits (Group 5)	Rental	\$54,197.00
	IPLC 1024 Kbits (Group 5)	Installation	\$1,350.00
	IPLC 1544 Kbits (Group 5)	Rental	\$64,530.00
	IPLC 1544 Kbits (Group 5)	Installation	\$1,350.00
	IPLC 2048 Kbits (Group 5)	Rental	\$86,130.00
	IPLC 2048 Kbits (Group 5)	Installation	\$1,350.00
	IPLC 56/64 Kbits (Group 6)	Rental	\$17,200.00
	IPLC 56/64 Kbits (Group 6)	Installation	\$1,350.00
	IPLC 128 Kbits (Group 6)	Rental	\$30,800.00
	IPLC 128 Kbits (Group 6)	Installation	\$1,350.00
	IPLC 192 Kbits (Group 6)	Rental	\$43,868.00
	IPLC 192 Kbits (Group 6)	Installation	\$1,350.00
	IPLC 256 Kbits (Group 6)	Rental	\$54,397.00
	IPLC 256 Kbits (Group 6)	Installation	\$1,350.00
	IPLC 320 Kbits (Group 6)	Rental	\$63,457.00
	IPLC 320 Kbits (Group 6)	Installation	\$1,350.00
	IPLC 384 Kbits (Group 6)	Rental	\$71,305.00
	IPLC 384 Kbits (Group 6)	Installation	\$1,350.00
	IPLC 512 Kbits (Group 6)	Rental	\$84,156.00
	IPLC 512 Kbits (Group 6)	Installation	\$1,350.00
	IPLC 768 Kbits (Group 6)	Rental	\$102,302.00
	IPLC 768 Kbits (Group 6)	Installation	\$1,350.00
	IPLC 1024 Kbits (Group 6)	Rental	\$115,079.00

**APPENDIX D**

<b>Provider</b>	<b>Product</b>	<b>Type</b>	<b>Prices</b>
	IPLC 1024 Kbits (Group 6)	Installation	\$1,350.00
	IPLC 1544 Kbits (Group 6)	Rental	\$140,773.00
	IPLC 1544 Kbits (Group 6)	Installation	\$1,350.00
	IPLC 2048 kbits Band 1a	Installation	\$1,350.00
	IPLC 2048 kbits Band 4 (Group 6)	Rental	\$170,200.00
	64 Port Charge	Rental	
	128 Port Charge	Rental	\$1,429.00
<b>CWWI</b>	<b>Frame Relay</b>		
	Frame Access Charge 64k	Rental	\$1,688.00
	Frame Access Charge 64k	Installation	\$2,717.00
	Frame Relay Access Charge 128k	Rental	\$2,195.00
	Frame Relay Access Charge 128k	Installation	\$2,717.00
	Frame Relay Access Charge 192k	Rental	\$2,700.00
	Frame Relay Access Charge 192k	Installation	\$2,717.00
	Frame Relay Access Charges 256k	Rental	\$3,208.00
	Frame Relay Access Charges 256k	Installation	\$2,717.00
	Frame Relay Access Charles 384k	Rental	\$3,713.00
	Frame Relay Access Charles 384k	Installation	\$2,717.00
	Frame Relay Access Charges 512k	Rental	\$4,220.00
	Frame Relay Access Charges 512k	Installation	\$2,717.00
	Frame Relay Access Charge 768k	Rental	\$5,570.00
	Frame Relay Access Charge 768k	Installation	\$2,717.00
	Frame Relay Access Charge 1024k	Rental	\$6,583.00
	Frame Relay Access Charge 1024k	Installation	\$2,717.00
	Frame Relay Access Charge 1544k	Rental	\$8,438.00
	Frame Relay Access Charge 1544k	Installation	\$2,717.00
	Frame Relay Access Charge 2048k	Rental	\$10,970.00
	Frame Relay Access Charge 2048k	Installation	\$3,375.00
	Frame Relay Access Charge 4M	Rental	\$21,433.00
	Frame Relay Access Charge 4M	Installation	\$3,375.00
	Frame Relay Access Charge 6M	Rental	\$31,558.00
	Frame Relay Access Charge 6M	Installation	\$3,375.00
	Frame Relay Access Charge 8M	Rental	\$41,683.00
	Frame Relay Access Charge 8M	Installation	\$3,375.00
	Frame Relay Access Charge 10M	Rental	\$51,470.00
	Frame Relay Access Charge 10M	Installation	\$3,375.00
	Frame Relay PVC Charge Zone 1 16kbps CIR	Rental	\$860.00
	Frame Relay PVC Charge Zone 1 24kbps CIR	Rental	\$1,013.00
	Frame Relay PVC Charge Zone 1 32kbps CIR	Rental	\$1,013.00
	Frame Relay PVC Charge Zone 1 48kbps CIR	Rental	\$1,013.00
	Frame Relay PVC Charge Zone 1 54kbps CIR	Rental	\$1,688.00

APPENDIX D

Provider	Product	Type	Prices
	Frame Relay PVC Charge Zone 1 64kbps CIR	Rental	\$1,688.00
	Frame Relay PVC Charge Zone 1 96kbps CIR	Rental	\$1,688.00
	Frame Relay PVC Charge Zone 1 128kbps CIR	Rental	\$2,533.00
	Frame Relay PVC Charge Zone 1 192k Cir	Rental	\$3,208.00
	Frame Relay PVC Charge Zone 1 256K Cir	Rental	\$3,713.00
	Frame Relay PVC Charge Zone 1 384K Cir	Rental	\$5,400.00
	Frame Relay PVC Charge Zone 1 512K Cir	Rental	\$6,920.00
	Frame Relay PVC Charge Zone 1 768k Cir	Rental	\$10,125.00
	Frame Relay PVC Charge Zone 1 1024k Cir	Rental	\$10,800.00
	Frame Relay PVC Charge Zone 1 1544k Cir	Rental	\$13,500.00
	Frame Relay PVC Charge Zone 1 2048k Cir	Rental	\$16,875.00
	Frame Relay PVC Charge Zone 1 4Mbps	Rental	-
	Frame Relay PVC Charge Zone 2 16kbps Cir	Rental	\$1,688.00
	Frame Relay PVC Charge Zone 2 24kbps CIR	Rental	\$1,688.00
	Frame Relay PVC Charge Zone 2 32 kbps CIR	Rental	\$1,688.00
	Frame Relay PVC Charge Zone 2 48kbps Cir	Rental	\$1,688.00
	Frame Relay PVC Charge Zone 2 56kbps Cir	Rental	\$2,363.00
	Frame Relay PVC Charge Zone 2 64kbps Cir	Rental	\$2,363.00
	Frame Relay PVC Charge Zone 2 96kbps Cir	Rental	\$2,363.00
	Frame Relay PVC Charge Zone 2 128kbps Cir	Rental	\$3,038.00
	Frame Relay PVC Charge Zone 2 192kbps Cir	Rental	\$4,388.00
	Frame Relay PVC Charge Zone 2 256kbps Cir	Rental	\$5,570.00
	Frame Relay PVC Charge Zone 2 384kbps Cir	Rental	\$7,933.00
	Frame Relay PVC Charge Zone 2 512kbps Cir	Rental	\$10,463.00
	Frame Relay PVC Charge Zone 2 768kbps Cir	Rental	\$14,345.00
	Frame Relay PVC Charge Zone 2 1024bps Cir	Rental	\$17,383.00
	Frame Relay PVC Charge Zone 2 1544kbps Cir	Rental	\$23,625.00
	Frame Relay PVC Charge Zone 2 2048kbps Cir	Rental	\$28,350.00
	Frame Relay PVC Charge Zone 2 4Mbps Cir	Rental	\$54,000.00
	Frame Relay PVC Charge Zone 3 16kbps Cir	Rental	\$1,771.00
	Frame Relay PVC Charge Zone 3 24kbps Cir	Rental	\$1,771.00
	Frame Relay PVC Charge Zone 3 32 kbps Cir	Rental	\$1,771.00
	Frame Relay PVC Charge Zone 3 48kbps Cir	Rental	\$1,771.00
	Frame Relay PVC Charge Zone 3 56kbps Cir	Rental	\$3,038.00
	Frame Relay PVC Charge Zone 3 64kbps Cir	Rental	\$3,038.00
	Frame Relay PVC Charge Zone 3 96kbps Cir	Rental	\$4,304.00
	Frame Relay PVC Charge Zone 3 128kbps Cirf	Rental	\$5,654.00
	Frame Relay PVC Charge Zone 3 192kbps Cir	Rental	\$7,341.00
	Frame Relay PVC Charge Zone 3 256kbps Cir	Rental	\$9,620.00
	Frame Relay PVC Charge Zone 3 384kbps Cir	Rental	\$11,645.00
	Frame Relay PVC Charge Zone 3 512kbps Cir	Rental	\$14,513.00
	Frame Relay PVC Charge Zone 3 768kbps Cir	Rental	\$19,408.00

## APPENDIX D

Provider	Product	Type	Prices
	Frame Relay PVC Charge Zone 3 1024bps Cir	Rental	\$22,950.00
	Frame Relay PVC Charge Zone 3 1544kbps Cir	Rental	\$25,650.00
	Frame Relay PVC Charge Zone 3 2048kbps Cir	Rental	\$31,220.00
	Frame Relay PVC Charge Zone 3 4Mbps Cir	Rental	\$60,750.00
	Frame Relay PVC Charge Zone 4 16kbits CIR	Rental	\$1,941.00
	Frame Relay PVC Charge Zone 4 24kbits CIR	Rental	\$1,941.00
	Frame Relay PVC Charge Zone 4 32kbits CIR	Rental	\$1,941.00
	Frame Relay PVC Charge Zone 4 48kbits CIR	Rental	\$1,941.00
	Frame Relay PVC Charge Zone 4 56kbits CIR	Rental	\$3,545.00
	Frame Relay PVC Charge Zone 4 64kbits CIR	Rental	\$3,545.00
	Frame Relay PVC Charge Zone 4 96kbps Cir	Rental	\$5,063.00
	Frame Relay PVC Charge Zone 4 128kbps Cir	Rental	\$3,962.00
	Frame Relay PVC Charge Zone 4 192kbps Cir	Rental	\$8,775.00
	Frame Relay PVC Charge Zone 4 256kbps Cir	Rental	\$11,308.00
	Frame Relay PVC Charge Zone 4 384kbps Cir	Rental	\$13,500.00
	Frame Relay PVC Charge Zone 4 512kbps Cir	Rental	\$16,454.00
	Frame Relay PVC Charge Zone 4 768kbps Cir	Rental	\$21,433.00
	Frame Relay PVC Charge Zone 4 1024kbps Cir	Rental	\$25,313.00
	Frame Relay PVC Charge Zone 4 1544kbps Cir	Rental	\$28,350.00
	Frame Relay PVC Charge Zone 4 2048kbps Cir	Rental	\$34,258.00
	Frame Relay PVC Charge Zone 4 4Mbps Cir	Rental	\$69,358.00
	Port & Local Frame Access 56 kbits	Rental	\$1,688.00
	Port & Local Frame Access 64 kbits	Rental	\$1,688.00
	Port & Local Frame Access 128 kbits	Rental	\$2,195.00
	Port & Local Frame Access 192 kbits	Rental	\$2,700.00
	Port & Local Frame Access 256 kbits	Rental	\$3,208.00
	Port & Local Frame Access 384 kbits	Rental	\$3,713.00
	Port & Local Frame Access 512 kbits	Rental	\$4,220.00
	Port & Local Frame Access 1536 kbits	Rental	\$8,438.00
	Port & Local Frame Access 1536 kbits		\$2,717.00
	Frame Relay Port 64kbps	Rental	\$440.00
	Frame Relay Port 64kbps	Installation	\$400.00
	Frame Relay Port 128kbps	Rental	\$750.00
	Frame Relay Port 128kbps	Installation	\$400.00
	Frame Relay Port 256kbps	Rental	\$1,380.00
	Frame Relay Port 256kbps	Installation	\$400.00
	Frame Relay Port 512kbps	Rental	\$1,550.00
	Frame Relay Port 512kbps	Installation	\$400.00
	Frame Relay Port 2048kbps	Rental	\$1,845.00
	Frame Relay Port 2048kbps	Installation	\$400.00
	16k on-island PVC	Rental	\$40.00
	32kbit/s cir Main PVC	Rental	\$60.00



ECTEL	Eastern Caribbean Telecommunications Authority
ECTEL Member States	St. Kitts & Nevis, Dominica, Saint Lucia, St. Vincent & the Grenadines, Grenada
ECTEL Treaty	Treaty Establishing the Eastern Caribbean Telecommunications Authority
GPRS	General Packet Radio Service
EDGE	Enhanced Data Rates for GSM Evolution
GSM	Global System for Mobile Communications
ITU	International Telecommunications Union
Member States	St. Kitts & Nevis, Dominica, Saint Lucia, St. Vincent & the Grenadines, Grenada
Minister	Minister with responsibility for Telecommunications
Ministry	Ministry of Communications, Works, Transport and Public Utilities
MMS	Mobile Monitoring Station
NTRCs	National Telecommunications Regulatory Commissions in the ECTEL Member States
OECS	Organisation of Eastern Caribbean States
OOCUR	Organisation of Caribbean Utility Regulators
SMMS	Spectrum Monitoring and Management System
Treaty	Treaty Establishing the Eastern Caribbean Telecommunications Authority

## APPENDIX D

Provider	Product	Type	Prices
	64kbit/s cir Main PVC	Rental	\$90.00
	96kbits cir Main PVC	Rental	\$115.00
	128kbit/s cir Main PVC	Rental	\$130.00
	192kbit/s cir Main PVC	Rental	\$170.00
	256kbit/s cir Main PVC	Rental	\$195.00
	512kbit/s cir Main PVC	Rental	\$290.00
	768kbit/s cir Main PVC	Rental	\$370.00
	1024kbit/s cir Main PVC	Rental	\$430.00
	1536kbit/s cir Main PVC	Rental	\$550.00
	Provide E1 digital Trunk Lines	Rental	\$2,500.00
	Provide E1 digital Trunk Lines	Installation	\$2,000.00
	ISDN Basic Rate Line (Business)	Rental	\$165.00
	ISDN Basic Rate Line (Business)	Installation	\$300.00
	ISDN Basic Rate Line (Residential)	Rental	\$120.00
	ISDN Basic Rate Line (Residential)	Installation	\$300.00
	Private Wire 0-110 yds	Rental	\$46.00
	Private Wire 0-110 yds	Installation	\$184.00
	Private Wire 220-110 yds	Rental	\$22.00
	Private Wire 220-110 yds	Installation	\$74.00
	Private Wire 440-88-0 yds	Rental	\$30.00
	Private Wire 440-88-0 yds	Installation	\$104.00
	Private Wire 0.50 - 0.75 miles	Rental	\$38.00
	Private Wire 0.50 - 0.75 miles	Installation	\$144.00
	Private Wire 0.75-1.00 miles	Rental	\$38.00
	Private Wire 0.75-1.00 miles	Installation	\$184.00
	Private Wire 1.00-1.25 miles	Rental	\$54.00
	Private Wire 1.00-1.25 miles	Installation	\$224.00
	Private Wire 1.25-1.50 miles	Rental	\$62.00
	Private Wire 1.25-1.50 miles	Installation	\$264.00
	Private Wire 1.50-1.75 miles	Rental	\$70.00
	Private Wire 1.50-1.75 miles	Installation	\$304.00
	Private Wire 1.75-2.00 miles	Rental	\$78.00
	Private Wire 1.75-2.00 miles	Installation	\$344.00
	Private Wire 2.00-2.25 miles	Rental	\$86.00
	Private Wire 2.00-2.25 miles	Installation	\$384.00
	Private Wire 2.25-2.50 miles	Rental	\$94.00
	Private Wire 2.25-2.50 miles	Installation	\$424.00
	Private Wire 2.75-3.00 miles	Rental	\$180.00
	Private Wire 2.75-3.00 miles	Installation	\$100.00
	Private Wire - Different Exchange	Rental	\$180.00
	Private Wire - Different Exchange	Installation	\$100.00

## APPENDIX D

<b>Provider</b>	<b>Product</b>	<b>Type</b>	<b>Prices</b>
<b>CWWI</b>	<b>Xnet Dialup Internet Service</b>		
	Xnet - X10	Installation	\$80.00
	Xnet - X10	Rental	\$35.00
	Xnet - X20	Installation	\$80.00
	Xnet - X20	Rental	\$60.00
	Xnet - X30	Installation	\$80.00
	Xnet - X30	Rental	\$80.00
	Xnet - X50	Installation	\$80.00
	Xnet - X50	Rental	\$120.00
	Xnet - Unlimited	Installation	\$80.00
	Xnet - Unlimited	Rental	\$129.00
<b>CWWI</b>	<b>Xnet High Speed Internet Service</b>		
	ADSL - Xnet on Demand	Rental	\$50.00
	ADSL - Xnet on Demand	Installation	\$300.00
	ADSL - Xlite	Rental	\$99.00
	ADSL - Xlite	Installation	\$300.00
	ADSL - Ultra/Xnet256	Rental	\$99.00
	ADSL - Ultra/Xnet 256	Installation	\$300.00
	ADSL - Select/Xnet512	Rental	\$149.00
	ADSL - Select/Xnet 512	Installation	\$300.00
	ADSL - Premium/Xnet768	Rental	\$299.00
	ADSL - Premium/Xnet 768	Installation	\$300.00
	ADSL - Deluxe/Xnet1.544k	Rental	\$299.00
	ADSL - Deluxe/Xnet 1.544k	Installation	\$300.00
<b>CWWI</b>	<b>Mega-Lite Broadband Plan</b>		
	Broadband on Demand	Rental	\$50/12 hour
	Broadband on Demand	Installation	\$150.00
			\$19.99/month+
	Mega Lite	Rental	\$3.99 /day
	Mega Lite	Installation	\$100.00
	Mega	Rental	\$79.00/month
	Mega	Installation	\$150.00
	Mega Plus	Rental	\$149.00/month
	Mega Plus	Installation	\$150.00
	Mega Max (Residential)	Rental	\$249.00/month
	Mega Max (Residential)	Installation	\$150.00
	Premier	Rental	\$149.00/month
	Premier	Installation	\$150.00
	Premier Plus	Rental	\$279.00/month

**APPENDIX D**

<b>Provider</b>	<b>Product</b>	<b>Type</b>	<b>Prices</b>
	Premier Plus	Installation	\$150.00
	Mega Max (Business)	Rental	\$349.00/month
	Mega Max (Business)	Installation	\$150.00
<b>CWWI</b>	<b>Internet Access</b>		
	Internet Port Charges - 28.8	Rental	\$1,200.00
	Dedicated Internet Access - 64 Kbps	Rental	\$2,640.00
	Dedicated Internet Access - 64 Kbps	Installation	\$2,160.00
	Dedicated Internet Access - 128 Kbps	Rental	\$2,500.00
	Dedicated Internet Access - 128 Kbps	Installation	\$2,000.00
	Dedicated Internet Access - 256 Kbps	Rental	\$4,200.00
	Dedicated Internet Access - 256 Kbps	Installation	\$2,000.00
	Dedicated Internet Access - 512 Kbps	Rental	\$6,600.00
	Dedicated Internet Access - 512 Kbps	Installation	\$2,000.00
	Dedicated Internet Access - 768K	Rental	\$18,330.00
	Dedicated Internet Access - 1024kbps	Rental	\$1,100.00
	Dedicated Internet Access - 1024kbps	Installation	\$2,000.00
	Dedicated Internet Access - 1544 Kbps	Rental	\$1,700.00
	Dedicated Internet Access - 1544 Kbps	Installation	\$2,000.00
	Dedicated Internet Access - 2048 Kbps	Rental	\$2,300.00
	Dedicated Internet Access - 2048 Kbps	Installation	\$2,000.00
	Dedicated Internet Access - 3Mbps	Rental	\$3,400.00
	Dedicated Internet Access - 3Mbps	Installation	\$4,320.00
	Dedicated Internet Access - 4Mbps	Rental	\$4,500.00
	Dedicated Internet Access - 4Mbps	Installation	\$4,320.00
	Dedicated Internet Access - 5Mbps	Rental	\$5,600.00
	Dedicated Internet Access - 5Mbps	Installation	\$6,750.00
	Dedicated Internet Access - 6Mbps	Rental	\$6,700.00
	Dedicated Internet Access - 6Mbps	Installation	\$6,750.00
	Dedicated Internet Access - 7Mbps	Rental	\$7,800.00
	Dedicated Internet Access - 7Mbps	Installation	\$6,750.00
	Dedicated Internet Access - 8Mbps	Rental	\$8,900.00
	Dedicated Internet Access - 8Mbps	Installation	\$6,750.00
	Dedicated Internet Access - 9Mbps	Rental	\$10,000.00
	Dedicated Internet Access - 9Mbps	Installation	\$6,750.00
	Dedicated Internet Access - 10Mbps	Rental	\$11,100.00
	Dedicated Internet Access - 10Mbps	Installation	\$6,750.00
	Dedicated Internet Access - 15Mbps	Rental	\$16,600.00
	Dedicated Internet Access - 15Mbps	Installation	\$6,750.00
	Dedicated Internet Access - 20Mbps	Rental	\$22,000.00
	Dedicated Internet Access - 20Mbps	Installation	\$6,750.00
	Dedicated Internet Access - 25Mbps	Rental	\$27,400.00

## APPENDIX D

Provider	Product	Type	Prices
	Dedicated Internet Access - 25Mbps	Installation	\$6,750.00
	Dedicated Internet Access - 30Mbps	Rental	\$32,700.00
	Dedicated Internet Access - 30Mbps	Installation	\$6,750.00
	Dedicated Internet Access - 35Mbps	Rental	TBA
	Dedicated Internet Access - 35Mbps	Installation	\$6,750.00
	Dedicated Internet Access - 40Mbps	Rental	TBA
	Dedicated Internet Access - 40Mbps	Installation	\$6,750.00
	Dedicated Internet Access - 45Mbps	Rental	\$48,600.00
	Dedicated Internet Access - 45Mbps	Installation	\$6,750.00
	Domestic L/C Approach Link E1	Rental	\$5,200.00
	64kbit/s Access Bandwidth chg.per mnth.	Rental	\$440.00
	128kbit/s Access Bandwidth chg.per mnth.	Rental	\$750.00
	256kbit/s Access Bandwidth chg.per mnth.	Rental	\$1,380.00
	512kbit/s Access Bandwidth chg.per mnth	Rental	\$1,550.00
	E1 Access Bandwidth charge per month	Rental	\$1,845.00
<b>CWWI</b>	<b>Payphone Services</b>		
	Renter Payphone Package-DEL + Equipment	Rental	\$68.00
	Renter Payphone Package-DEL + Equipment	Installation	\$125.00
	Payphone to Fixed Line - Day	Minute	\$0.25
	Payphone to Fixed Line - Evening	Minute	\$0.25
	Payphone to Fixed Line - Weekend	Minute	\$0.25
	Payphone to Mobile Phone - Day	Minute	\$1.00
	Payphone to Mobile Phone - Evening	Minute	\$1.00
	Payphone to Mobile Phone - Weekend	Minute	\$1.00
<b>CWWI</b>	<b>Toll Free Services</b>		
	Number Assignment	per number	\$150.00
	Vanity Number	one-time charge	\$100.00
	Service Charges	one-time charge	\$50.00
	Minimum Usage Charges	per number	\$20.00
	Usage Rates	per minute	\$0.06
	Service Fee	Monthly	\$54.00
<b>CWWI</b>	<b>International Direct Dialling</b>		
	OECS – day	Minute	\$0.50
	OECS - night	Minute	\$0.50
	OECS - weekend	Minute	\$0.50
	Rest of C&W Caribbean Islands - day	Minute	\$0.66
	Rest of C&W Caribbean Islands - night	Minute	\$0.66
	Rest of C&W Caribbean Islands - weekend	Minute	\$0.66
	Rest of Caribbean - day	Minute	\$0.85

## APPENDIX D

Provider	Product	Type	Prices
	Rest of Caribbean - night	Minute	\$0.85
	Rest of Caribbean - weekend	Minute	\$0.85
	USA - day	Minute	\$1.25
	USA - night	Minute	\$0.90
	USA - weekend	Minute	\$0.90
	Canada - day	Minute	\$1.25
	Canada - night	Minute	\$0.90
	Canada - weekend	Minute	\$0.90
	UK & Ireland - day	Minute	\$1.25
	UK & Ireland - night	Minute	\$0.90
	UK & Ireland - weekend	Minute	\$0.90
	France - day	Minute	\$1.29
	France - night	Minute	\$1.25
	France - weekend	Minute	\$1.25
	Germany - day	Minute	\$1.29
	Germany - night	Minute	\$1.25
	Germany - weekend	Minute	\$1.25
	Central America - day	Minute	\$1.29
	Central America - night	Minute	\$1.25
	Central America - weekend	Minute	\$1.25
	South America - day	Minute	\$1.29
	South America - night	Minute	\$1.25
	South America - weekend	Minute	\$1.25
	Europe - day	Minute	\$1.29
	Europe - night	Minute	\$1.25
	Europe - weekend	Minute	\$1.25
	Rest of World - day	Minute	\$1.29
	Rest of World - night	Minute	\$1.25
	Rest of World - weekend	Minute	\$1.25

**Mobile/Cellular Pre-Paid & Post-Paid Rates and Packages**

**Cable & Wireless Caribbean Cellular (St. Lucia) Limited**

<b>Post-Paid Plan</b>	<b>Digital 40</b>	<b>Digital 150</b>	<b>Digital 350</b>	<b>Digital 500</b>
Monthly Plan (EC\$)	\$57	\$115	\$210	\$285
Minutes included per month	40	150	350	500
Peak Outbound per minute (EC\$)	\$0.79	\$0.79	\$0.79	\$0.79
Off Peak Outbound per minute (EC\$)	\$0.59	\$0.59	\$0.59	\$0.59
Incoming per minute (EC\$)	Free	Free	Free	Free

NB: *Off-Peak rates apply to evening rates between 6:00 p.m. and 8:00 a.m. weekdays; weekend calls from Midnight*

<b>Post-Paid Plan - bComplete</b>	<b>b200</b>	<b>b400</b>	<b>b600</b>
Monthly Plan (EC\$)	\$45	\$85	\$130
Minutes included per month	200	400	600
Peak Outbound per minute (EC\$)	\$0.79	\$0.79	\$0.79
Off Peak Outbound per minute (EC\$)	\$0.59	\$0.59	\$0.59
Voice Mail Retrieval	Free	Free	Free
Free Text Messages	10	10	10
Additional Peak Outbound per minute - Mobile	\$0.59	\$0.59	\$0.59
Additional Off-Peak Outbound per minute - Mobile	\$0.55	\$0.55	\$0.55
Additional Peak Outbound per minute - Fixed Line	\$0.59	\$0.59	\$0.59
Additional Off-Peak Outbound per minute - Fixed Line	\$0.59	\$0.59	\$0.59
Additional Anytime Outbound per minute - Fixed/Mobile	\$0.79	\$0.79	\$0.79
Additional Text Messages - Any Local Network	\$0.20	\$0.20	\$0.20
Additional Text Messages - Different CWWI Island	\$0.40	\$0.40	\$0.40
Outbound to Any International Network	\$0.50	\$0.50	\$0.50
Incoming per minute (EC\$)	Free	Free	Free

Post-Paid Plan - bExec	bExec	bExec	bExec	bExec	bExec	bExec	bExec	bExec
Monthly Plan (EC\$)	1000	2000	3500	5000	7500	10000		
Minutes included per month	\$235	\$425	\$750	\$1,000	\$1,500	\$2,050		
Voicemail Retrieval	Free	Free	Free	Free	Free	Free		
Free Text Messages	20	50	50	100	200	350		
Additional Peak Outbound per minute - Mobile	\$0.49	\$0.45	\$0.45	\$0.45	\$0.45	\$0.45		
Additional Off-Peak Outbound per minute - Mobile	\$0.49	\$0.45	\$0.45	\$0.45	\$0.45	\$0.45		
Additional Peak Outbound per minute - Fixed Line	\$0.59	\$0.49	\$0.49	\$0.49	\$0.49	\$0.48		
Additional Off-Peak Outbound per minute - Fixed Line	\$0.59	\$0.49	\$0.49	\$0.49	\$0.49	\$0.48		
Additional Anytime Outbound per minute - Fixed/Mobile	\$0.79	\$0.79	\$0.79	\$0.79	\$0.79	\$0.79		
Additional Text Messages - Any Local Network	\$0.20	\$0.20	\$0.20	\$0.20	\$0.20	\$0.20		
Additional Text Messages - Different CWWI Island	\$0.40	\$0.40	\$0.40	\$0.40	\$0.40	\$0.40		
Outbound to Any International Network	\$0.50	\$0.50	\$0.50	\$0.50	\$0.50	\$0.50		
Incoming per minute (EC\$)	Free	Free	Free	Free	Free	Free		

NB: Peak rates apply Monday - Friday 6am to 8pm



**Digicel (St. Lucia) Limited**

	DigiSELEC T-80	DigiSELECT 120	DigiSELECT 180	DigiSELEC T-270	DigiSELEC T-300	DigiSELEC T-450
<b>Post-Paid Plan</b>						
Monthly Plan (EC\$)	\$48	\$48	\$99	\$99	\$150	\$150
Minimum Deposits		\$100		\$150		\$200
Credit Limit		\$200		\$300		\$400
Free Minutes per month	80	120	180	270	300	450
<b>Rates to Own Mobile</b>						
- Day (EC\$)	\$ 0.70	0.70	\$ 0.65	0.65	\$ 0.60	0.60
- Evening (EC\$)	\$ 0.55	0.55	\$ 0.55	0.55	\$ 0.55	0.55
- Weekend (EC\$)	\$ 0.50	0.50	\$ 0.50	0.50	\$ 0.50	0.50
<b>Rates to Fixed line &amp; Other Mobile</b>						
- Day (EC\$)	\$ 0.80	0.80	\$ 0.75	0.75	\$ 0.70	0.70
- Evening (EC\$)	\$ 0.65	65.00	\$ 0.65	0.65	\$ 0.65	0.65
- Weekend (EC\$)	\$ 0.60	0.60	\$ 0.60	0.60	\$ 0.60	0.60
Incoming per minute(EC\$)	Free		Free		Free	

**Wireless Ventures (St. Lucia) Limited**

	Plan 80	Plan 125	Plan 250	Plan 450	Plan 600
<b>Post-Paid Plan</b>					
Monthly Plan (EC\$)	\$50	\$ 75	\$ 125	\$ 200	\$ 300
Free Minutes per month	80	120	250	450	800
<b>Outgoing Calls (7am to 6:59pm, Mon-Fri)</b>					
- To WV Mobiles (EC\$)	\$ 0.70	\$ 0.65	\$ 0.60	\$ 0.55	\$ 0.50
- To Fixed Line (EC\$)	\$ 0.80	\$ 0.75	\$ 0.70	\$ 0.65	\$ 0.60
- To Other Mobiles (EC\$)	\$ 0.90	\$ 0.85	\$ 0.80	\$ 0.75	\$ 0.70
<b>Nights &amp; Weekends (7pm to 6:59am, Mon-Fri, all hours Sat &amp; Sun)</b>					
- To WV Mobiles (EC\$)	\$ 0.50	\$ 0.55	\$ 0.50	\$ 0.50	\$ 0.40

**Mobile/Cellular Pre-Paid Rates**

Operator	Pre-Paid Per Minute Charges/EC\$		
	Peak	Off-peak	Weekend
<i>Outgoing Mobile-to-Mobile of Same Operator</i>			
C&W Caribbean Cellular	0.70	0.55	0.55
Digicel / Wireless Ventures	0.75	0.65	0.50
<i>Outgoing Mobile-to-Fixed</i>			
C&W Caribbean Cellular	0.84	0.75	0.75
Digicel / Wireless Ventures	0.85	0.80	0.75
<i>Outgoing Mobile-to-Mobile of Another Operator</i>			
C&W Caribbean Cellular	0.80	0.80	0.80
Digicel / Wireless Ventures	0.85	0.80	0.75

**Other Telecommunications Services and Rates**

Kelcom International (Karib Cable)	
High-Speed Broadband Internet 1.1 Mbps	Rental \$79/month
High-Speed Broadband Internet 2.2 Mbps	Rental \$149/month
High-Speed Broadband Internet 3.3 Mbps	Rental \$249/month
High-Speed Broadband Internet 4.4 Mbps	Rental \$499.00/month
Modems	Regular \$99.00
	Wireless \$475.00
Subscriber TV: 80 Channels	
	Rental \$69.00/month
Double Play: 80 channels+1.1 Mbps	Rental \$135/month
Mega Play: 100 Digital Channels + 1.1 Mbps	Rental 199.99/monthly



## EXECUTIVE SUMMARY

Through the reporting period 1<sup>st</sup> October 2007 to 30<sup>th</sup> September 2008, the Commission endeavoured to ensure that its efforts as the regulator of the telecommunications sector continued to deliver benefits to all stakeholders. The Commission looked to strengthen its institutional structures for greater efficiency; it published relevant documents on sector matters which could better inform stakeholders on pertinent telecommunications issues; as well as enacted measures which would lead to the further liberalization of the telecommunications market.

A new board of five (5) Commissioners was appointed by the Minister in October 2007, to regulate the Telecommunications sector and to continue to oversee Saint Lucia's obligations to the ECTEL Treaty. The Commission relocated its offices, in the first instance moving its office and operation from the Global Tile Building at Bois D'Orange to temporary location in the headquarters of the Eastern Caribbean Telecommunications Authority (ECTEL) and then, finally settling into the S&S Building at Number 35 Chisel Street, Castries.

Internally the Commission finalized and published its *Technical Standards for Mobile Radio Services*; it finalized all its Framework documents; updated publications on its website to reflect the current regulations and continued to enhance its internal processes.

The Commission has observed that under the reporting period, the telecommunications sector proved to be robust and although the total revenue intake for the sector was down as compared to the previous period, it contributed an estimated EC \$240 million to Saint Lucia's Gross Domestic. The number of operators in the market grew with the issuance of twelve (12) telecommunications licences and the Commission has seen renewed interest by persons in the sector, especially in the fixed public telecommunications services, internet networks/services, FM Radio broadcast and subscriber

Exec
25000
\$5,000
25000
Free
500
\$0.45
\$0.45
\$0.46
\$0.46
\$0.79
\$0.20
\$0.40
\$0.50
Free

DigiSELEC T 600	DigiSELECT 900
\$285	\$285
	\$300
	\$600
600	900
\$0.55	0.55
\$ 0.55	0.55
\$ 0.50	0.50
\$0.65	0.65
\$ 0.65	0.65
\$ 0.60	0.60
Free	

**APPENDIX E:**

**Diary of Key Events**

DIARY OF KEY EVENTS

2007	
<p>1<sup>st</sup> Quarter October - December</p>	<ul style="list-style-type: none"> <li>• A new board of five (5) Commissioners was appointed by the Minister.</li> <li>• The Commission temporarily relocated its offices to ECTEL headquarters for the period October 2007 to January 2008 and permanently relocated into the S&amp;S Building at Number 35 Chisel Street, Castries.</li> <li>• ECTEL's revised Licensing Evaluation Criteria gazetted in December 2006.</li> <li>• ECTEL formally notified of classification of Broadcast Network Licence as a class licence</li> <li>• The court awarded the Commission forty-five percent (45%) of the legal costs it incurred in the Cariaccess lawsuit.</li> </ul>
2008	
<p>2<sup>nd</sup> Quarter January – March</p>	<ul style="list-style-type: none"> <li>• Commission received correspondence granting it 100% waiver of import duty and consumption tax on equipment and material required for spectrum monitoring equipment.</li> <li>• The lease agreement between the Commission and the landlord of the Global Tile Building expired.</li> <li>• The MMS was relocated to ECTEL's headquarters.</li> <li>• The Commission and Mr. Alexis Fevrier parted ways.</li> </ul>
<p>3<sup>rd</sup> Quarter April – June</p>	<ul style="list-style-type: none"> <li>• The garage of the MMS was dismantled and material was stored at ECTEL's headquarters.</li> <li>• ECTEL facilitated a workshop on the application process for assignment of numbers, which was held in Grenada from April 17<sup>th</sup> to April 18<sup>th</sup>, 2008</li> </ul>



## APPENDIX E

	<ul style="list-style-type: none"><li>• An extension was granted to the interconnection agreement between Cable &amp; Wireless and Digicel.</li><li>• Commission facilitated a meeting with radio operators with equipment at Moule-a-Chique to discuss the state of the infrastructure;</li><li>• The Commission hosted ECTEL's public forum for Interconnection Regulations;</li><li>• Mr. Anthony Blasse commenced duties as Coordinator to the Commission;</li><li>• Communications was sent to Broadcast Operators informing them of the Broadcast Network Licence requirement.</li><li>• The organisational structure of the secretariat was revised.</li></ul>
4 <sup>th</sup> Quarter July - September	<ul style="list-style-type: none"><li>• The Price Cap Plan established for Cable &amp; Wireless (West Indies) Limited was extended up to 30<sup>th</sup> November 2009.</li><li>• ECTEL hosted a workshop for ICT Pilot Projects for ECTEL Member States</li></ul>

**THE NATIONAL TELECOMMUNICATIONS REGULATORY COMMISSION**

**FINANCIAL STATEMENTS**

**SEPTEMBER 30, 2008**



**G LLEWELLYN GILL & CO.  
CHARTERED ACCOUNTANTS  
P O BOX 546, CASTRIES**

**THE NATIONAL TELECOMMUNICATIONS REGULATORY COMMISSION**

**SEPTEMBER 30, 2008**

**CONTENTS**

	<b>Page</b>
<b>INDEPENDENT AUDITORS' REPORT</b>	1-2
<b>FINANCIAL STATEMENTS</b>	
Balance Sheet	3
Statement of Changes in Funds	4
Statement of Support and Expenditure	5
Statement of Cash Flows	6
Notes to Financial Statements	7-9



# *G. Llewellyn Gill & Co.*

*Chartered Accountants*

*McVane Drive  
Sans Soucis  
P. O. Box 546,  
Castries,  
Saint Lucia.*

*Telephone: 758-451-9251*

*Fax: 758-451-9324*

*E-Mail-gilll@candw.lc*

## **INDEPENDENT AUDITORS' REPORT**

To the Commissioners of:

**THE NATIONAL TELECOMMUNICATIONS REGULATORY COMMISSION**

### **Report on the Financial Statements**

We have audited the accompanying financial statements of **THE NATIONAL TELECOMMUNICATIONS REGULATORY COMMISSION** which comprise the balance sheet as at September 30, 2008 and the statement of changes in funds, statement of support and expenditure and cash flow statement for the year then ended, and a summary of significant accounting policies and other explanatory notes.

#### *Management's Responsibility for the Financial Statements*

Management is responsible for the preparation and fair presentation of these financial statements in accordance with International Financial Reporting Standards. This responsibility includes: designing, implementing and maintaining internal control relevant to the preparation and fair presentation of financial statements that are free from material misstatement, whether due to fraud or error; selecting and applying appropriate accounting policies; and making accounting estimates that are reasonable in the circumstances.

#### *Auditor's Responsibility*

Our responsibility is to express an opinion on these financial statements based on our audit. We conducted our audit in accordance with International Standards on Auditing. Those standards require that we comply with ethical requirements and plan and perform the audit to obtain reasonable assurance whether the financial statements are free of material misstatement.

An audit involves performing procedures to obtain audit evidence about the amounts and disclosures in the financial statements. The procedures selected depend on the auditor's judgement, including the assessment of the risks of material misstatement of the financial statements, whether due to fraud or error. In making those risk assessments, the auditor considers internal control relevant to the entity's preparation and fair presentation of the financial statements in order to design audit procedures that are appropriate in the circumstances, but not for the purpose of expressing an opinion on the effectiveness of the entity's internal control. An audit also includes evaluating the appropriateness of accounting principles used and the reasonableness of accounting estimates made by management, as well as evaluating the overall financial statement presentation.

We believe that the audit evidence we have obtained is sufficient and appropriate to provide a basis for our audit opinion.

**INDEPENDENT AUDITORS' REPORT (Cont'd)**

To the Commissioners of:

**THE NATIONAL TELECOMMUNICATIONS REGULATORY COMMISSION**

**Report on the Financial Statements**

*Opinion*

In our opinion, the financial statements present fairly, in all material respects, the financial position of **THE NATIONAL TELECOMMUNICATIONS REGULATORY COMMISSION** as of September 30, 2008, and of its financial performance and its cash flows for the year then ended in accordance with International Financial Reporting Standards.

Castries, St Lucia  
March 5, 2009

  
Chartered Accountants

THE NATIONAL TELECOMMUNICATIONS REGULATORY COMMISSION

BALANCE SHEET

AS AT SEPTEMBER 30, 2008

ASSETS

	<u>2008</u>	<u>2007</u>
<b>CURRENT ASSETS</b>		
Cash	\$ 586,627	552,169
Prepaid expenses	<u>62,293</u>	<u>13,822</u>
	<u>648,920</u>	<u>565,991</u>
<b>PROPERTY PLANT &amp; EQUIPMENT (Note 4 )</b>	<u>158,639</u>	<u>124,854</u>
	<u>\$ 807,559</u>	<u>\$ 690,845</u>

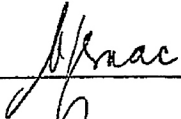
LIABILITIES

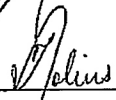
<b>CURRENT LIABILITIES</b>		
Due to ECTEL	\$ 55,000	\$ -
Accounts payable	20,244	23,246
Gratuity payable	<u>71,262</u>	<u>50,722</u>
	<u>146,506</u>	<u>73,968</u>

FUNDS

<b>ACCUMULATED SURPLUS</b>	<u>661,053</u>	<u>616,877</u>
	<u>\$ 807,559</u>	<u>\$ 690,845</u>

APPROVED BY THE COMMISSION ON 5<sup>th</sup> March, 2009

 Chairman

 Member

television markets. Several new entrants in the telecommunications market deployed their networks, offering services to the public.

The Price Cap Plan established for Cable & Wireless (West Indies) Limited which was due to expire at the end of November 2008 was extended for an additional year, and as such the current Price Cap Plan will expire 30<sup>th</sup> November 2009. The interconnection agreement between Digicel (St. Lucia) Limited and Cable & Wireless (St. Lucia) Limited expired in March 2008 and both parties sought an extension to the agreement and this extension was granted by the Commission. Pursuant to section 15 of the Telecommunications (Quality of Service) Regulations 2007, the Commission enacted the mechanism of Quality of Service (QoS) reports by which all of the service providers must furnish the Commission with quarterly QoS reports.

The directorate of the Eastern Caribbean Telecommunications Authority finalized the Broadcast Network Licence Application form and made the determination that the broadcast network service should be placed under the category of a Class Licence. With notice of the designation of the above events, the Commission accelerated its ongoing campaign to get broadcast operators regularized under the provisions of the Telecommunications Act. The Eastern Caribbean Telecommunications Authority finalized its manual on the process for number assignment, and the main aim of the manual is to provide guidance to all stakeholders.

Review of the telecommunications legislation has continued, and during the reporting period, the Commission dealt with a number of public consultations initiated on the behalf of other agencies namely Eastern Caribbean Telecommunications Authority and the Caribbean Telecommunication Union, or on its behalf.

THE NATIONAL TELECOMMUNICATIONS REGULATORY COMMISSION

STATEMENT OF CHANGES IN FUNDS

YEAR ENDED SEPTEMBER 30, 2008

	<u>Contributed Funds</u>	<u>Accumulated Surplus</u>	<u>Total</u>
Balance at beginning of year	\$ 2,165	\$ 484,762	\$ 486,927
Amortization of Contributed Funds	(2,165)	2,165	-
Excess Support over Expenditure	<u>-</u>	<u>129,950</u>	<u>129,950</u>
Balance at September 30, 2007	\$ <u>-</u>	\$ <u>616,877</u>	\$ <u>616,877</u>
<b>Balance at beginning of year</b>	<b>\$ -</b>	<b>\$ 616,877</b>	<b>\$ 616,877</b>
<b>Amortization of Contributed Funds</b>	<b>-</b>	<b>-</b>	<b>-</b>
<b>Excess Support over Expenditure</b>	<b><u>-</u></b>	<b><u>44,176</u></b>	<b><u>44,176</u></b>
<b>Balance at September 30, 2008</b>	<b>\$ <u>-</u></b>	<b>\$ <u>661,053</u></b>	<b>\$ <u>661,053</u></b>

The accompanying notes form an integral part of these statements.



**THE NATIONAL TELECOMMUNICATIONS REGULATORY COMMISSION**

**STATEMENT OF SUPPORT AND EXPENDITURE**

**YEAR ENDED SEPTEMBER 30, 2008**

	<u>2008</u>	<u>2007</u>
<b>SUPPORT</b>		
Contributions from ECTEL	\$ 757,233	\$ 748,358
Application fees	45,751	29,169
Gain on disposal of assets	-	847
Other	<u>9,751</u>	<u>14,132</u>
	<u>812,735</u>	<u>792,506</u>
 <b>EXPENDITURE</b>		
Advertising and promotion	13,464	13,884
Audit	5,000	5,000
Cash loss	22,971	-
Bank charges and interest	3,413	1,751
Commissioner's fees	80,200	80,168
Depreciation	29,417	23,102
Gratuity	66,652	59,924
Insurance	7,736	7,281
Legal and professional fees	5,332	29,050
Membership and subscriptions	1,123	1,116
Motor vehicle expenses	2,948	1,609
Office expenses	16,644	14,152
Rent	82,800	54,000
Repairs and maintenance	20,642	8,671
Salaries and wages	337,398	301,823
Staff Uniforms	7,102	-
Supplies	9,148	3,142
Training	1,200	-
Travelling and entertainment	-	4,256
Utilities	<u>55,369</u>	<u>53,627</u>
	<u>768,559</u>	<u>662,556</u>
<b>EXCESS OF SUPPORT OVER EXPENDITURE for the year</b>	<b>\$ <u>44,176</u></b>	<b>\$ <u>129,950</u></b>

The accompanying notes form an integral part of these statements.

**THE NATIONAL TELECOMMUNICATIONS REGULATORY COMMISSION**

**STATEMENT OF CASH FLOWS**

**YEAR ENDED SEPTEMBER 30, 2008**

	<u>2008</u>	<u>2007</u>
<b>Cash Flows from Operating Activities</b>		
Excess of support over expenditure for the year	\$ 44,176	\$ 129,950
Add/(deduct): charges to income not involving cash		
Depreciation	29,417	23,102
Gain on disposal of assets	<u>-</u>	<u>(847)</u>
	73,593	152,205
Net change in non-cash working capital balances related to operations*	<u>24,067</u>	<u>(17,646)</u>
Net cash provided by operating activities	<u>97,660</u>	<u>134,559</u>
<b>Cash Flows from Investing Activities</b>		
Additions to capital assets	(109,001)	(31,997)
Proceeds from disposal of assets	<u>45,799</u>	<u>2,000</u>
Net cash provided by (used in) investing activities	<u>(63,202)</u>	<u>(29,997)</u>
<b>INCREASE/(DECREASE) IN CASH</b>	<b>34,458</b>	<b>104,562</b>
<b>CASH AND CASH EQUIVALENTS, beginning of year</b>	<u><b>552,169</b></u>	<u><b>447,607</b></u>
<b>CASH AND CASH EQUIVALENTS, end of year</b>	<u><b>\$ 586,627</b></u>	<u><b>\$ 552,169</b></u>
*Consisting of changes in:		
Due to ECTEL	\$ 55,000	\$ -
Prepaid expenses	(48,471)	2,370
Accounts payable	(3,002)	2,924
Gratuity payable	<u>20,540</u>	<u>(22,940)</u>
	<u>\$ 24,067</u>	<u>\$ (17,646)</u>

The accompanying notes form an integral part of these statements.

**THE NATIONAL TELECOMMUNICATIONS REGULATORY COMMISSION**

**NOTES TO THE FINANCIAL STATEMENTS**

**SEPTEMBER 30, 2008**

**1. INTRODUCTION**

The National Telecommunications Regulatory Commission was established by the Telecommunications Act Cap. 8.11 of the 2001 Revised Edition Laws of St.Lucia on the 22nd November 2000. The Commission commenced operations on March 18, 2002.

The principal activity of the Commission is to execute the functions defined in Section 11 of the Telecommunications Act Cap. 8.11 in the regulation of Telecommunications in Saint Lucia.

**2. SIGNIFICANT ACCOUNTING POLICIES**

**(a) Basis of Presentation**

These statements are prepared in accordance with International Financial Reporting Standards which comprise standards issued or adopted by the International Accounting Standards Board and interpretations issued by its Standing Interpretations Committee. They have been prepared under the historical cost convention and are expressed in Eastern Caribbean Dollars. There have been no changes in accounting policy from the previous year. Receipts and expenditure are accounted for on the accrual basis of accounting.

**(b) Cash and cash equivalents**

Cash and cash equivalents comprise cash on hand and demand and short term deposits with original maturities of less than one year. For the purpose of the cash flow statement, cash and cash equivalents comprise balances of cash on hand and current accounts less any bank overdraft balances

**(c) Property, Plant and Equipment**

Property, Plant and Equipment, are stated at historical cost less accumulated depreciation. Additions to Property, Plant and Equipment are recorded at cost. Depreciation is calculated on the straight line basis, so as to write off the cost of each asset over their estimated useful lives as follows: -

Furniture & equipment	- 15% - 25%
-----------------------	-------------

**(d) Accounts payable**

Trade accounts, other payables and accrued liabilities represent the principal amounts outstanding at the balance sheet date plus, where applicable, any accrued interest.

**(e) Revenue recognition**

Revenue is recognised when the agreed Contributions become due and on the completion of other service transactions when the related fees can be reliably estimated.

**(f) Income Tax**

The Commission is exempt from Income Tax under the provisions of the Telecommunications Act.

**THE NATIONAL TELECOMMUNICATIONS REGULATORY COMMISSION**

**NOTES TO THE FINANCIAL STATEMENTS**

**SEPTEMBER 30, 2008**

**3. FINANCIAL RISK MANAGEMENT**

In accordance with the provisions of International Accounting Standard No. 32, disclosure is required regarding credit risks, interest rates and fair values of financial assets and liabilities.

(a) Credit risk

Credit risk arises from the possibility that counterparties may default on their obligations to the Commission. The Commission is not exposed to any significant credit risks.

(b) Interest Rate Risk

Differences in contractual repricing or maturity dates and changes in interest rates may expose the Commission to interest rate risk. The Commission's exposure and interest rates are restricted to the interest paid on its savings and operating accounts.

(c) Fair Value of Financial Instruments

Fair value amounts represent estimates of the consideration that would currently be agreed upon between knowledgeable, willing parties who are under no compulsion to act and are best evidenced by quoted market values, if they exist. None of the Commission's financial assets and liabilities are traded in a formal market. Estimated fair values are assumed to approximate their carrying values.

(d) Liquidity Risk

The Commission is exposed to the risk that it may encounter difficulties in raising funds to meet its commitments. Management seeks to maintain levels of cash sufficient to meet reasonable expectations of its short term obligations.

**4. PROPERTY PLANT & EQUIPMENT**

	<u>Furniture &amp; Equipment</u>	<u>Leasehold Improvements</u>	<u>Total</u>	
			2008	2007
<b>COST</b>				
Balance at beginning of year	\$ 198,710	\$ -	\$ 198,710	\$ 171,483
Additions	23,235	85,766	109,001	31,997
Disposals	<u>(52,082)</u>	<u>-</u>	<u>(52,082)</u>	<u>(4,770)</u>
Balance at end of year	<u>169,863</u>	<u>85,766</u>	<u>\$ 255,629</u>	<u>198,710</u>
<b>DEPRECIATION</b>				
Balance at beginning of year	\$ 73,856	\$ -	73,856	54,370
Depreciation for the year	23,699	5,718	29,417	23,102
Disposals	<u>(6,283)</u>	<u>-</u>	<u>(6,283)</u>	<u>(3,616)</u>
Balance at end of year	<u>91,272</u>	<u>5,718</u>	<u>96,990</u>	<u>73,856</u>
<b>Book Value end of year</b>	<b><u>\$ 78,591</u></b>	<b><u>\$ 80,048</u></b>	<b><u>\$ 158,639</u></b>	<b><u>\$ 124,854</u></b>

**THE NATIONAL TELECOMMUNICATIONS REGULATORY COMMISSION**

**NOTES TO THE FINANCIAL STATEMENTS**

**SEPTEMBER 30, 2008**

**5. CONTRIBUTED FUNDS**

These funds have been provided by the Government of St.Lucia as a contribution towards the purchase of Assets for the Commission. The funds were amortized over a period of five years on a straight line basis commencing 2003.

**6. COMPARATIVE FIGURES**

Where changes have been made in the presentation of the current year's figures, comparative amounts have been restated.

<b>PROJECT &amp; GENERAL TASKS</b>	<b>STATUS &amp; COMMENTS</b>
Updating of NTRC Financial Records	<i>In progress</i>
Preparation of Technical Standards – Customer Premises Wiring	<i>In Progress</i>
Preparation of Technical standards – Broadcast Stations	<i>To begin</i>
<b>Clean up of Moule-à-Chique Site</b> <ul style="list-style-type: none"> <li>• Undertake an exercise where all broadcast operators must equip their transmitters with filters</li> <li>• Undertake an exercise where all receivers will require interference protection</li> <li>• Development of Guidelines with stakeholders for maintenance of telecommunications infrastructure</li> </ul>	<i>To begin</i>
<b>Draft Framework for Aeronautical Mobile Radio Operations in Saint Lucia</b>	<i>Ongoing</i>
<b>Frequency Audit of Land Mobile Radio Operations in Saint Lucia</b>	<i>Ongoing.</i>
<b>Current monitoring capabilities of the Technical unit to be fully assessed to determine required and preferred improvements</b>	<i>Ongoing</i>
<b>Call sign and power verification – Amateur radio Framework</b>	<i>In Progress</i>
<b>Revised Sector Procedures Manual</b>	<i>Ongoing.</i>
<b>Revised Guidance Notes</b>	<i>Ongoing.</i>
<b>Establishment of a link between DPP and Police department regarding the prosecuting of offenders.</b>	<i>To begin</i>
<b>Draft Disaster Preparedness Plan</b> <ul style="list-style-type: none"> <li>• Update Disaster Preparedness Plan</li> </ul>	<i>In Progress</i>
<b>Public Education</b>	<i>To begin</i>
<b>Finalisation of Maritime Framework</b>	<i>Ongoing.</i>
<b>Review of NTRC Website</b>	<i>Ongoing.</i>