

ANNUAL REPORT

for the period
October 2006 to September 2007

July 16th, 2008

National Telecommunications Regulatory Commission

Saint Lucia

NATIONAL TELECOMMUNICATIONS REGULATORY COMMISSION

1.1 Constitution of the Commission

The National Telecommunications Regulatory Commission saw the appointment of the following Commissioners for the three (3) year term November 1st, 2006 to October 31st, 2009:

Mr. Thaddeus Antoine (Chairman)

Mr. Eldon Mathurin

Mr. Victor Eudoxie

Mr. Victor Ellis

Ms. Aurea Lafeuillee

However, effective September 1st, 2007, said the Commission resigned.

1.2 Diary of Key Events

A Diary of Key Events during the period October 2006 to September 2007 has been presented as Appendix A, however below is a synopsis of the most significant events.

- In December 2006, Cariaccess filed a lawsuit against Cable & Wireless, with the National Telecommunications Regulatory Commission named as the second (2nd) defendant.
- In March 2007, a lawsuit that had been filed against the Commission by Cariaccess Communications (St. Lucia) Limited was struck out by the Courts.
- The resignation of the Commissioners in September 2007.

2

THE SECRETARIAT

For this reporting period, the organisational structure of the Secretariat remained unchanged, however four (4) positions became vacant and have since been filled.

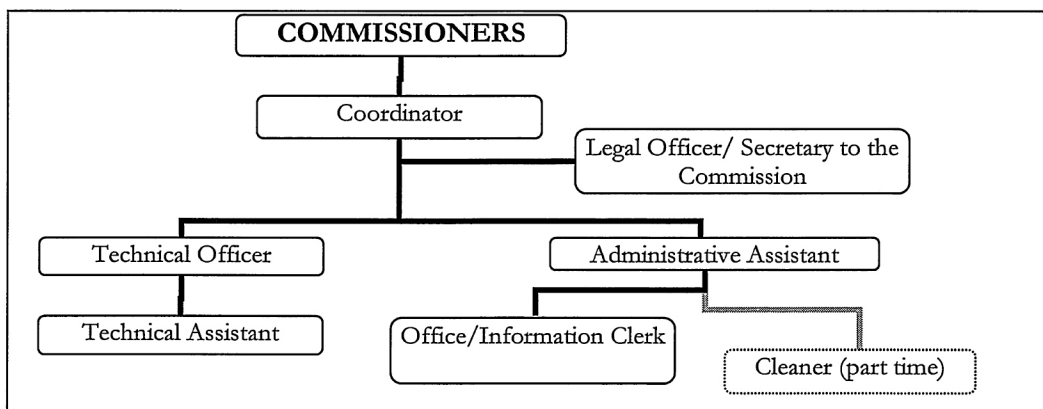


Figure 2.1: Organisational Structure for the National Telecommunications Regulatory Commission

2.1 Appointments

2.1.1 Position of Coordinator

Effective August 18th, 2007, Ms. Michele Marius vacated the position of Coordinator with the Commission. The position was advertised in the local newspapers, and interviews were held with short-listed candidates. Mr. Alexis C. Fevrier was selected and accepted the offer of employment with the Commission effective July 7th, 2007. For the period July 9th, 2007 to August 17th, 2007, Mr. Fevrier occupied the position of Coordinator Designate and assumed the position of Coordinator effective August 18th, 2007.

2.1.2 Position of Legal Officer/Secretary to the Commission

The contract for the Legal Officer/Secretary to the Commission, Mrs. Shana Willie-Matoorah, was renewed for one year, to end on August 30th, 2008.

2.1.3 Position of Technical Officer

Effective January 22nd, 2007, Mr Alvin Augustin was appointed to the position of Technical Officer to the Commission.

2.1.4 Position of Administrative Assistant

Ms. Suzette Merille vacated the position of Administrative Assistant on April 10th, 2007, which, effective August 7th, 2007, was filled by the then Office/Information Clerk, Mrs. Christine Dujon-Polius.

2.1.5 Position of Office/Information Clerk

Ms. Melesia Charles opted not to renew her contract and as a result Mrs. Christine Dujon-Polius was appointed to the position effective September 11th, 2006. With the promotion of Ms. Dujon-Polius to the position of Administrative Assistant, the Office/Information Clerk position became vacant. After an advertisement and interview process, a new Office/Information Clerk in the person of Miss Wilma Burton was selected and took up the offer of employment with the Commission affective September 2nd, 2007.

2.2 Training & Professional Development

2.2.1 ITU/CTU/OOCUR Seminar

The Coordinator attended, the Caribbean Region Seminar on Issues in Telecommunication Economics and Financing, From September 10th, to September 13th, 2007, in Antigua and Barbuda. The seminar focused on the areas of cost modelling, termination rates and convergence.

2.2.2 ECTEL Workshop

Commissioner Victor Ellis attended a workshop on the Consultancy – Extending the Use of Broadband Applications by Governments and Private Sector, which took place in St. Kitts & Nevis from June 25th to June 26th, 2007.

2.2.3 ECTEL/NTRC Support Staff Training Workshop

In June 2007, the second *ECTEL/NTRC Support Staff Training Workshop* was held in Saint Lucia, as part of efforts towards continuing professional development. Its main objective was to enhance individual and team performance by focussing on the participant's development and professionalism. The Office/Information Clerk attended the workshop.

3

Financial Review

In this chapter, the accounts for the National Telecommunications Regulatory Commission, for the period October 1st, 2006 to September 30th, 2007, are presented and discussed. The discussion is supported by the Auditor's Financial Report, which has been included.

3.1 Summary of Income Inflows and Usage

For the period October 1st, 2006 to September 30th, 2007, ECTEL disbursed EC\$ 748,358.00 to meet the Commission's proposed operating budget.

3.2 Financial Audit Report

The Financial Audit Report was prepared by independent auditors, G. Llweyllyn Gill and Company (*See Appendix B for details*).

4

Telecommunications Licences, Certification & Registration

During this reporting period, applications for Certificate of Type Approval increased marginally, as the awareness of the requirement to receive type approval pursuant to regulations 4 and 17 of the Telecommunications (Terminal Equipment and Public Network) Regulations 2002.

4.1 Telecommunications Licence Update

Pursuant to s. 14(7) of the Act, the Commission prepared for publication in the Saint Lucia Government Gazette a list of the *Telecommunications Licences that have been Issued, Modified, Renewed or Revoked in Saint Lucia*, as of September 30th, 2007. A copy of the list submitted for publication has been provided as Appendix C.

Also, in keeping with the exercise that was presented in the last report to illustrate the Commission's concern with regard to the number of licences that have been issued since the enactment of the Telecommunications Act 2000, Table 4.1 provides an update on

- the number of licence applications that the Commission received, for the period under review,
- the number of those applications (by date of receipt) for which positive recommendations were submitted to the Minister, and
- the number of licences that the Commission has on record as having been issued by the Minister, within a stated year.

	October 2006 to September 2007
No. of Licence Applications Received by the Commission	95
No. of Application Closed with Positive Recommendations	45
No. of Licences Granted by the Minister	6

Table 4.1: Status of Telecommunications Licence Applications Received and Processed through the Commission for the period October 2006 to September 2007

4.2 Closure of Longstanding Open Telecommunications Applications

Further communication was received from ECTEL on the matter of the status of applications forwarded to them for review and recommendation. The exercise is still ongoing.

4.3 Customer Premises (Inside) Wiring

Preparatory work is ongoing on the technical standards for customer premises (inside) wiring, and it is expected to be completed by December 31st, 2008.

5

TELECOMMUNICATIONS FEES

For the period October 2006 to September 2007, the following amounts in telecommunications fees were collected by the Government of Saint Lucia (GoSL) and by ECTEL in Saint Lucia.

Licence Fees (GoSL)	EC\$ 5,928,841.30
Spectrum Fees (ECTEL)	EC\$ 1,310,800.00
TOTAL	EC\$ 7,239,641.30

5.1 Telecommunications Licence Fees

The telecommunications licence fees collected by the Inland Revenue Department (IRD) for 2006/2007 increased from the last period (EC\$ 5,319,665.00), as shown in Table 5.1.

Year	2003/4	2004/5	2005/6	2006/7
Licence Fees (EC\$)	1,549,825	5,319,665	5,206,445.30	5,928,841.3
Change	-	↑ 243%	↓ 2 %	↑14%

Table 5.1: Comparison of the Telecommunications Licence Fees Collected by the Inland Revenue Department

5.2 Frequency Authorisation (Spectrum) Fees

The amount collected as telecommunications frequency authorisation (or spectrum) fees in Saint Lucia decreased drastically since the last reporting period, as illustrated in Table 5.2. However, as indicated in the 2004/2005 Report, the high revenue collection was a unique occurrence, due to the late payment of bills issued in the 2003/2004 financial year. Hence, the amounts reported for 2005/2006 might be a more accurate reflection of the annual revenues generated from the use of the radio frequency spectrum.

Year	2003/4	2004/5	2005/6	2006/7
Spectrum Fees (EC\$)	986,733	3,397,800	1,733,800	1,310,800
Change	-	↑ 244%	↓ 49 %	↓24%

Table 5.2: Comparison of the Spectrum Fees Collected by ECTEL in Saint Lucia

In total, ECTEL collected EC\$ 6,534,325.00 for 2005/2006 from all of its Member States, with Saint Lucia contributing approximately 26.5% to the amount collected. Further, although there was some uncertainty arising from the purchase of Cingular's Caribbean operation by Digicel, as it could affect revenues from use of the radio frequency spectrum, based on the Commission's records, so far there has been no major reduction in the invoiced amounts to that licensee in Saint Lucia.

6

LEGISLATIVE REVIEW

As reported in the Annual Report of 2005/2006, the following draft revised pieces of legislation submitted by ECTEL to the Permanent Secretaries in the Ministries of Telecommunications in its Member States for publication have not been published to date.

- Telecommunications (Licensing and Authorisation) Regulations
- Telecommunications (Spectrum Management) Regulations
- Telecommunications (Dispute Resolution) Regulations
- Telecommunications (Universal Service Fund Contribution) Order

6.1 Promulgation of Telecommunications Regulations

The following Regulations were passed and published in St. Lucia during the reporting period.

- Telecommunications (Quality of Service) Regulations, No 148 of 2007
- Telecommunications (Wholesale) Regulations, No 168 of 2007

- Telecommunications (Exemption) Regulations, No 149 of 2007
- Telecommunications (Numbering) Regulations, No 139 of 2007

NTRC hosted public consultations on the Telecommunications (Universal Service Fund) Regulations on behalf of ECTEL.

Additionally, a revision of the Telecommunications (Interconnections) Regulations was forwarded to the Ministry of Communications, Works, Transport and Public Utilities for publication in the Saint Lucia Gazette.

7

TARIFF & PRICING

During this reporting period, consumers continued to benefit from rate reductions and improved service offerings within the Domestic Fixed to Fixed Calling and High Speed Internet areas. (*see appendix F*)

7.1 Services Provided

Within the period October 2006 to September 2007, Cable & Wireless (West Indies) Limited introduced the following new services:

- Cheap Chat;
- Rebranded XNet service

Cheap Chat – allows consumers unlimited domestic fixed to fixed calls at any time for a fixed monthly fee of \$25.

Re-branded XNet Service – The current XNet service was re-branded creating new packages with additional features at reduced rates. The table below provides a comparison of the old and new Xnet packages.

Residential Xnet Packages					
Current Name	Speed (download/upload) (kbps unless noted)	Price	New Name	New Speed (download/upload) (kbps unless noted)	New Price

Xnet on Demand	512/256	\$50/12 hrs*	Xnet on Demand	1024/256	\$50/12 hrs*
X512	512/256	\$79	Mega		\$79
X1544	1544/512	\$149	Mega Plus	2048/512	\$149
X3	3072/768	\$249	Mega Max	3072/768	\$249

Business Xnet Packages					
Current Name	Speed (download/upload) (kbps unless noted)	Price	New Name	New Speed (download/upload) (kbps unless noted)	New Price
			Premier	1024/256	\$149
			Premier Plus	3072/512	\$279
Business X1544	1544/512	\$149	Premier Max	4096/768	\$349
+Business X3	3072/768	\$249	Premier Max	4096/768	\$349

Table 7.3: Rebranded XNet Packages.

7.2 Service Changes

During the reporting period, Cable & Wireless (West Indies) Limited initiated the following rate or service changes for telecommunications services regulated under the approved Price Cap Plan:

- Change to the way pay phone to mobile calls are charged;
- Unlimited domestic Fixed Line-to-Fixed Line Service (Cheap Chat);
- Direct Internet Access Service;
- Changes to Xnet High Speed Internet Service.
- Dial up Internet Service

Pursuant to r. 22 of the Telecommunications (Retail Tariff) Regulations 2005, Cable & Wireless (West Indies) Limited applied to the Commission to change its rates for its Direct Internet Access (“DIA”) Service, on August 30th, 2007. Additionally, Cable & Wireless (West Indies) Limited also applied for changes to their XNet High Speed Internet Service, on July 30th, 2007 and a change in the manner in which Payphone to Mobile calls are charged on September 7th, 2007. These applications were accompanied by a Rate Change Compliance Filing, in keeping with Rule 8 of the Plan.

The approved rate changes are presented in Table 7.6 for the DIA Service and in Table 7.3 above for the XNet High Speed Internet Service.

	128 kbps	256 kbps	512 kbps	1024 kbps	1544 kbps	2048 kbps
Installation (old)	\$ 2,000	\$ 2,000	\$ 2,000	\$ 2,000	\$ 2,000	\$ 2,000
Installation (new)	\$ 2,000	\$ 2,000	\$ 2,000	\$ 2,000	\$ 2,000	\$ 2,000
Monthly (old)	\$ 2,500	\$ 4,200	\$ 6,600	\$ 9,800	\$ 14,900	\$ 18,900
Monthly (new)	\$ 1,600	\$ 2,300	\$ 4,500	\$ 8,200	\$ 11,600	\$ 14,600
1 Year Contract (old)	\$ 2,000	\$ 3,300	\$ 5,200	\$ 7,800	\$ 11,900	\$ 15,100
1 Year Contract (new)	\$ 1,280	\$ 1,832	\$ 3,608	\$ 6,523	\$ 9,313	\$ 11,665
2 Year Contract (old)	\$ 1,700	\$ 2,900	\$ 4,600	\$ 6,900	\$ 10,400	\$ 13,200
2 Year Contract (new)	\$ 1,120	\$ 1,610	\$ 3,150	\$ 5,740	\$ 8,120	\$ 10,220
3 Year Contract (old)	\$ 1,500	\$ 2,500	\$ 3,900	\$ 5,900	\$ 8,900	\$ 11,300
3 Year Contract (new)	\$ 960	\$ 1,380	\$ 2,700	\$ 4,920	\$ 6,960	\$ 8,760

Table 7.6: Approved rate changes in EC\$ for the Direct Internet Access Service

7.3 Telecommunications Rates in Effect in Saint Lucia

For completeness of this discourse on telecommunications rates, the rates for services offered by the telecommunications providers in Saint Lucia has been included as Appendix F.

8

OTHER SECTOR ISSUES

8.1 Public Consultations

The reporting year saw at least Ten (10) public consultations which have been listed below:

1. Dominance
2. Long Run Incremental Cost (LRIC) Model
3. Dispute Resolution Resource Manual
4. Proposed Policy on Convergence and other matters

5. Telecommunications (Universal Service Fund) Regulations
6. Telecommunications (Exemption) Regulations
7. Telecommunications (Quality of Service) Regulations
8. Draft Framework for the Determination of Market Competitiveness
9. Framework for Land Mobile Radio Operations in Saint Lucia
10. Framework for Maritime Mobile Radio Operations in Saint Lucia

8.2 Mobile Termination Rates

Early in this reporting period the former Minister with responsibilities for Telecommunications requested that the Commission revisit the mobile termination rates that were in effect in Saint Lucia.

To this end the Commission engaged the relevant stakeholders and an exercise ensued to determine among other things, the rates charged by Cable & Wireless and other mobile network operators to terminate Fixed to Mobile (FTM), Mobile to Mobile (MTM) and International to Mobile (ITM); whether or not the rates established by the Cable & Wireless Caribbean Cellular (St. Lucia) Limited to terminate Fixed to Mobile (FTM), Mobile to Mobile (MTM) and International to Mobile (ITM) calls, are cost based; and the basis upon which Cable & Wireless established their rates, and agreed to pay similar rates to other mobile network operators, evidenced in the interconnection agreements that exist between Cable & Wireless (West Indies) Limited and Digicel St. Lucia Limited, and between Cable & Wireless (West Indies) Limited and Wireless Ventures (St. Lucia) Limited.

In addition to the information gathered, the Commission awaits the conclusion of ECTEL 's ongoing consultation on the Long Run Incremental Cost (LRIC), in order to obtain relevant information to make a determination.

8.3 Interconnection between Cable & Wireless (West Indies) Limited and Antilles Crossing (St. Lucia) Limited

The Commission has communicated its findings to Cable & Wireless (West Indies) Limited and Antilles Crossing (St. Lucia) Limited, with regards to the interconnection agreement between the parties, submitted to the Commission on February 2nd 2006.

2007/2008 WORK PROGRAMME

A review of the Commission's Work Programme for 2006/2007 shows continuing progress in most of the projects outlined for the year. The projects undertaken were in addition to the day-to-day and substantive work of the organisation. A number of areas have been delayed as the Commission awaits vital information from various stakeholders in the telecommunications sector.

9.1 Update on 2006/2007 Work Plan

The major focus of the 2006/2007 Work Plan was the verification of the Commission records and the preparation and publication of approved Technical Standards governing the mobile radio services in Saint Lucia and the framework documents except for the Aeronautical Mobile Radio Framework document have been completed. For ease of reference, a copy of the 2006/2007 Work Plan Schedule has been included as Appendix G.

9.1.1 Frameworks

During the period under review, an additional four (4) of the proposed frameworks have been completed. These are as follows:

- Land Mobile Radio Service
- Maritime Mobile Radio Service

9.1.2 Licensing of Telecommunications Users & Service Providers

During the review of ECTEL's consultation documents errors/discrepancies were discovered with the licensing templates for Class Band the same has been communicated to ECTEL. Up to the time of finalising this report, no word has been received from ECTEL on the matter.

The exercise to register and re-license persons involved in telecommunications operations and/or the selling of telecommunications equipment has not been re-energised after the dismal response received when the exercises initially started in 2005/2006. The lack of certain internal procedures and processes made it difficult for the Commission to continue this initiative at the time. Additionally the lack of Class Licence Type B templates meant that there was no available licence document to present to these persons. However now that these internal processes have been completed and implemented, and it is expected that the

licence documents will soon be forthcoming from ECTEL; the Commission will be in a position to re-launch the initiative within the next fiscal year.

9.1.3 Office Procedures

A review of the following internal procedures for the Legal and Administrative Units were approved:

- (i) Financial Procedures – approved July 2nd, 2007
- (ii) Personnel Procedures – approved July 2nd, 2007
- (iii) Regulatory Procedures – approved December 7th, 2006
- (iv) Management of Information and Assets Procedures – approved July 2nd, 2007

9.1.4 Internal Procedures of the Technical Unit

A review of the Internal Procedures of the Technical Unit was conducted and approved by the Commission during this period under review. The internal procedures have as its purpose, the following objectives:

- (i) To qualify the responsibilities and duties of the TU;
- (ii) To promote a consistent approach in the conduct of the operations of the TU;
and
- (iii) To document pertinent information of the Commission where it applies to the duties and responsibilities of the TU, which should provide some guidance in the orientation of new members of staff.

The Internal Procedures of the Technical Unit are divided into the five (5) modules, namely:

Module 1: General Information & Common Procedures

Module 2: Application Review Procedures

Module 3: Complaints and Field Work

Module 4: Spectrum Management and Monitoring

Module 5: Administrative Procedures.

9.1.5 Sector Procedures Manual

A review of the Sector Procedures Manual was scheduled to be undertaken in during this reporting period. As a result of the legislative review presently being conducted on the Telecommunications (Retail Tariff) Regulations and the Telecommunications (Numbering) Regulations, the planned review of the Sector Procedures have been suspended.

9.1.6 Public Education

The Commission's website is being constantly updated to ensure that its content remains current, to provide the best possible information to the public, however additional options are currently being investigated to increase the public awareness of the existence, role and responsibilities of the Commission. The education campaign will also focus on enlightening the St. Lucian public on the other requirements and provisions of the Telecommunications Act.

9.1.7 Amateur Radio Operations

Although the *Framework for Amateur Radio Operations in Saint Lucia* was finalised within the first quarter of 2006, the absence of a functioning Amateur Radio Clubs has meant that the Commission has had to take on all of the responsibilities for the certification of Amateur Radio Users, which would have normally been done by the amateur fraternity.

As such, the certification program is not progressing as quickly as one would have preferred. It is expected however, that the efforts of the local amateur radio fraternity at reorganising a functioning Amateur Radio Clubs will pay off in the new year and the Commission will have a partner in this certification effort.

9.1.8 Spectrum Monitoring

It would be remembered that the previous Annual Report indicated that the departure of the Technical Officer in July 2006 resulted in a delay in the Commission's spectrum monitoring activities. Even with the appointment of a new Technical Officer in January 2007, the monitoring exercise was further delayed due to a breakdown of the Mobile Monitoring Vehicle (MMS). At the end of this reporting period the matter of the MMS vehicle was receiving attention from ECTEL's Technical Team and it is expected that the vehicle will be fully operational early in the new year.

9.1.9 Standards Development

Under its mandate, the Commission developed the following technical standards:

- Technical Standards for Maritime Mobile Radio
- Technical Standards for Aeronautical Radio
- Technical Standards for Amateur Radio
- Technical Standards for Land Mobile Radio
- Technical Standards for Citizens Band Radio
- Technical Standards for Family Radio

These standards have all been completed and will be presented for public consultation in the coming year.

9.2 Work Plan Schedule for 2007/2008

Presented below are the activities that are earmarked for action during the period October 2007 to September 2008.

PROJECT & GENERAL TASKS	STATUS & COMMENTS
Licensing of Telecommunications Users & Service Providers	Continuing
Amateur Radio Operations <ul style="list-style-type: none"> • Establish certification scheme for prospective amateur radio operators • Licence new amateur radio operators 	In progress <i>Work has begun on certification scheme. Licensing of new amateur radio operators dependent on completion of certification scheme.</i>
Aeronautical Mobile Radio Operators <ul style="list-style-type: none"> • Preparation of a Draft Framework for operations in Saint Lucia 	In progress <i>Awaiting information from the ECCAA</i>
Spectrum Monitoring <ul style="list-style-type: none"> • Continue monitoring exercise • Revise database • Determine and execute follow-up action to be taken for identified breaches 	In progress <i>Exercise to begin after signoff on the repairs to the MMS vehicle.</i>
Standards Development <ul style="list-style-type: none"> • Review and finalise standards based on comments from ongoing consultation 	In progress <i>Consultations ongoing are presently ongoing on a number of the standards. Work is to begin on standards for Customer Premise Wiring and upon</i>

PROJECT & GENERAL TASKS	STATUS & COMMENTS
<ul style="list-style-type: none"> • Prepare standards for Customer Premises wiring and Broadcast Stations for internal review 	<i>the completion of ECTEL's revised Regional Spectrum Plan, work is to begin on standards for Broadcast Stations</i>
Sector Procedures Manual <ul style="list-style-type: none"> • Update existing modules • Develop additional modules 	To begin
Public Education <ul style="list-style-type: none"> • Continue update of website to remain current • Investigate and implement additional campaigns within the resources of the Commission 	Ongoing <i>Ongoing</i> <i>To begin</i>
Clean up Module-á-Chique Site <ul style="list-style-type: none"> • Undertake an exercise where all broadcast operators must equip their transmitters with filters • Undertake an exercise where all receivers will require interference protection • Development of Guidelines with stakeholders for maintenance of telecommunications infrastructure 	Ongoing <i>Presently ongoing. Time estimate for completion of the project is dependent on the willing cooperation of broadcast operators.</i>

10

Final Remarks

Telecommunications development in St. Lucia is continuing at a rapid pace. The level of interest and queries that the Commission receives is a clear indication of the interest in the local telecommunications sector by both local and foreign investors. This interest is manifested in the number of applications received by the Commission for licences and frequency authorisations and in the recommendations that have been forwarded to the Minister. It is expected that within the next year, as these licences are issued, we should see the commencement of service offering by these providers. Whilst this report highlights the achievements of the Commission within this reporting period and the current state of the

telecommunications sector generally, it is also important to pay attention to some of the deficiencies which still exist, many of which have been repeated in previous reports.

At this juncture it is imperative that the Commission along with other regional and national bodies focus their attention in meeting the desired objectives of the liberalisation of the telecommunications sector.

APPENDICES:

APPENDIX A:

Diary of Key Events

National Telecommunications Regulatory Commission

Annual Report

for the period

October 2006 to September 2007

July 16th, 2008

Suite # 1
#35 Chisel Street
Castries
P. O. Box GM 690
Castries
Saint Lucia, West Indies

Tel: (758) 458 2035
Fax (758) 453 2558
Email: ntrc_slucandw@ntrc.org
Website: www.ntrc.org

DIARY OF KEY EVENTS

2006	
<p>1st Quarter October - December</p>	<ul style="list-style-type: none"> • There was a change in Government resulting in a new Minister with responsibility for Telecommunications. • ECTEL Council of Ministers approved the rotation of the Chairmanship of its Council and Board, resulting in St. Lucia holding the Chairmanship for the Council and Grenada holding Chairmanship of the Board • ECTEL's revised Licensing Evaluation Criteria gazetted in December 2006. • Appointment of a Commission
2007	
<p>2nd Quarter January – March</p>	<ul style="list-style-type: none"> • Lawsuit brought against the Commission by Carriaccess Communications (St. Lucia) Ltd. was struck down by the Courts. • Acquisition of Wireless Ventures by Digicel Saint Lucia Limited
<p>3rd Quarter April – June</p>	<ul style="list-style-type: none"> • Global Caribbean Network, the parent company of Antilles Crossing (St. Lucia) Ltd. merged with, Southern Caribbean Fibre to form Global Caribbean Fibre. The entire shareholding of Antilles Crossing (St. Lucia) Ltd. was transferred to the new entity. There was no change in the on island operation. • Ministry of Health visited the office to assess air quality. No scientific tests were conducted; however a number of recommendations were made and implemented, including the installation of windows and the removal of carpeting in favour of tiles.
<p>4th Quarter</p>	<ul style="list-style-type: none"> • ECTEL forwarded to member governments the following

APPENDIX A

July - September	<p>telecommunications regulations for promulgation:</p> <ul style="list-style-type: none">○ Exemption Regulations○ Wholesale Regulations○ Quality of Service Regulations○ Numbering Regulations <ul style="list-style-type: none">● A new Coordinator was appointed● ITU/CANTO/OCCUR presented a regional workshop on cost modelling, termination rates and convergence● A decision to vacate the premises occupied by the Commission at Bois D'Orange was taken based on the continuing air quality issues along with a number of other matters not being addressed by the landlord.● Resignation of the Commission
------------------	--

APPENDIX B

Financial Audit Report

THE NATIONAL TELECOMMUNICATIONS REGULATORY COMMISSION

FINANCIAL STATEMENTS

SEPTEMBER 30, 2007



**G LLEWELLYN GILL & CO.
CHARTERED ACCOUNTANTS
P O BOX 546, CASTRIES**

THE NATIONAL TELECOMMUNICATIONS REGULATORY COMMISSION

SEPTEMBER 30, 2007

CONTENTS

	Page
INDEPENDENT AUDITORS' REPORT	1-2
FINANCIAL STATEMENTS	
Balance Sheet	3
Statement of Changes in Funds	4
Statement of Support and Expenditure	5
Statement of Cash Flows	6
Notes to Financial Statements	7-9

G LLEWELLYN GILL & CO.
CHARTERED ACCOUNTANTS
P O BOX 546, CASTRIES



G. Llewellyn Gill & Co.

Chartered Accountants

*LeVane Drive
Sans Soucis
P. O. Box 546,
Castries,
Saint Lucia.*

Telephone: 758-451-9251

Fax: 758-451-9324

E-Mail-gillll@candw.lc

INDEPENDENT AUDITORS' REPORT

To the Commissioners of:
THE NATIONAL TELECOMMUNICATIONS REGULATORY COMMISSION

Report on the Financial Statements

We have audited the accompanying financial statements of **THE NATIONAL TELECOMMUNICATIONS REGULATORY COMMISSION** which comprise the balance sheet as at September 30, 2007 and the statement of changes in funds, statement of support and expenditure and cash flow statement for the year then ended, and a summary of significant accounting policies and other explanatory notes.

Management's Responsibility for the Financial Statements

Management is responsible for the preparation and fair presentation of these financial statements in accordance with International Financial Reporting Standards. This responsibility includes: designing, implementing and maintaining internal control relevant to the preparation and fair presentation of financial statements that are free from material misstatement, whether due to fraud or error; selecting and applying appropriate accounting policies; and making accounting estimates that are reasonable in the circumstances.

Auditor's Responsibility

Our responsibility is to express an opinion on these financial statements based on our audit. We conducted our audit in accordance with International Standards on Auditing. Those standards require that we comply with ethical requirements and plan and perform the audit to obtain reasonable assurance whether the financial statements are free of material misstatement.

An audit involves performing procedures to obtain audit evidence about the amounts and disclosures in the financial statements. The procedures selected depend on the auditor's judgement, including the assessment of the risks of material misstatement of the financial statements, whether due to fraud or error. In making those risk assessments, the auditor considers internal control relevant to the entity's preparation and fair presentation of the financial statements in order to design audit procedures that are appropriate in the circumstances, but not for the purpose of expressing an opinion on the effectiveness of the entity's internal control. An audit also includes evaluating the appropriateness of accounting principles used and the reasonableness of accounting estimates made by management, as well as evaluating the overall financial statement presentation.

We believe that the audit evidence we have obtained is sufficient and appropriate to provide a basis for our audit opinion.

INDEPENDENT AUDITORS' REPORT (Cont'd)

To the Commissioners of::

THE NATIONAL TELECOMMUNICATIONS REGULATORY COMMISSION

Report on the Financial Statements

Opinion

In our opinion, the financial statements present fairly, in all material respects, the financial position of **THE NATIONAL TELECOMMUNICATIONS REGULATORY COMMISSION** as of September 30, 2007, and of its financial performance and its cash flows for the year then ended in accordance with International Financial Reporting Standards.

Castries, St Lucia
July 16, 2008


Chartered Accountants

THE NATIONAL TELECOMMUNICATIONS REGULATORY COMMISSION

BALANCE SHEET

AS AT SEPTEMBER 30, 2007

ASSETS

	<u>2007</u>	<u>2006</u>
CURRENT ASSETS		
Cash	\$ 552,169	447,607
Prepaid expenses	<u>13,822</u>	<u>16,192</u>
	<u>565,991</u>	<u>463,799</u>
PROPERTY PLANT & EQUIPMENT (Note 4)	<u>124,854</u>	<u>117,113</u>
	<u>\$ 690,845</u>	<u>\$ 580,912</u>

LIABILITIES

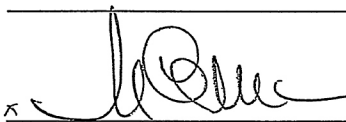
CURRENT LIABILITIES		
Accounts payable	\$ 23,246	20,323
Gratuity payable	<u>50,722</u>	<u>73,662</u>
	<u>73,968</u>	<u>93,985</u>

FUNDS

CONTRIBUTED FUNDS (Note 5)	-	2,166
ACCUMULATED SURPLUS	<u>616,877</u>	<u>484,761</u>
	<u>616,877</u>	<u>486,927</u>
	<u>\$ 690,845</u>	<u>\$ 580,912</u>

APPROVED BY THE COMMISSION ON _____, 2008

_____ Chairman

x  _____ Member

The accompanying notes form an integral part of these statements.

LIST OF CONTENTS

List of Figures and Tables.....	5
Abbreviations and Acronyms	5
Executive Summary.....	7
1 National Telecommunications Regulatory Commission	8
1.1 Constitution of the Commission.....	8
1.2 Diary of Key Events	8
2 The Secretariat.....	9
2.1 Appointments.....	9
2.1.1 Position of Coordinator.....	9
2.1.2 Position of Legal Officer/Secretary to the Commission	9
2.1.3 Position of Technical Officer.....	10
2.1.4 Position of Administrative Assistant.....	10
2.1.5 Position of Office/Information Clerk.....	10
2.2 Training & Professional Development.....	10
2.2.1 ITU/CTU/OOCUR Seminar.....	10
2.2.2 ECTEL Workshop.....	10
2.2.3 ECTEL/NTRC Support Staff Training Workshop	10
3 Financial Review	11
3.1 Summary of Income Inflows.....	11
3.2 Financial Audit Report	11
4 Telecommunications Licences, Certification & Registration	11
4.1 Telecommunications Licence Update.....	11
4.2 Closure of Longstanding Open Telecommunications Applications	12

THE NATIONAL TELECOMMUNICATIONS REGULATORY COMMISSION

STATEMENT OF CHANGES IN FUNDS

YEAR ENDED SEPTEMBER 30, 2007

	<u>Contributed Funds</u>	<u>Accumulated Surplus</u>	<u>Total</u>
Balance at beginning of year	\$ 4,332	\$ 341,367	\$ 345,699
Amortization of Contributed Funds	(2,167)	2,167	-
Excess Support over Expenditure	<u>-</u>	<u>141,228</u>	<u>141,228</u>
Balance at September 30, 2006	<u>\$ 2,165</u>	<u>\$ 484,762</u>	<u>\$ 486,927</u>
Balance at beginning of year	\$ 2,165	\$ 484,762	\$ 486,927
Amortization of Contributed Funds	(2,165)	2,165	-
Excess Support over Expenditure	<u>-</u>	<u>129,950</u>	<u>129,950</u>
Balance at September 30, 2007	<u>\$ -</u>	<u>\$ 616,877</u>	<u>\$ 616,877</u>

The accompanying notes form an integral part of these statements.

THE NATIONAL TELECOMMUNICATIONS REGULATORY COMMISSION

STATEMENT OF SUPPORT AND EXPENDITURE

YEAR ENDED SEPTEMBER 30, 2007

	<u>2007</u>	<u>2006</u>
SUPPORT		
Contributions from ECTEL	\$ 748,358	\$ 748,358
Application fees	29,169	44,057
Gain on disposal of assets	847	-
Other	<u>14,132</u>	<u>7,438</u>
	<u>792,506</u>	<u>799,853</u>
 EXPENDITURE		
Advertising and promotion	13,884	8,279
Audit	5,000	5,000
Bank charges and interest	1,751	348
Commissioner's fees	80,168	91,200
Depreciation	23,102	20,873
Gratuity	59,924	61,689
Insurance	7,281	9,778
Legal and professional fees	29,050	2,400
Membership and subscriptions	1,116	2,148
Motor vehicle expenses	1,609	2,622
Office expenses	14,152	19,490
Rent	54,000	54,000
Repairs and maintenance	8,671	12,283
Salaries and wages	301,823	307,154
Supplies	3,142	7,546
Training	-	8,777
Travelling and entertainment	4,256	-
Utilities	<u>53,627</u>	<u>45,036</u>
	<u>662,556</u>	<u>658,623</u>
EXCESS OF SUPPORT OVER EXPENDITURE for the year	\$ <u>129,950</u>	\$ <u>141,230</u>

The accompanying notes form an integral part of these statements.

THE NATIONAL TELECOMMUNICATIONS REGULATORY COMMISSION

STATEMENT OF CASH FLOWS

YEAR ENDED SEPTEMBER 30, 2007

	<u>2007</u>	<u>2006</u>
Cash Flows from Operating Activities		
Excess of support over expenditure for the year	\$ 129,950	\$ 141,228
Add/(deduct): charges to income not involving cash		
Depreciation	23,102	20,873
Gain on disposal of assets	<u>(847)</u>	<u>-</u>
	152,205	162,101
Net change in non-cash working capital balances related to operations*	<u>(17,646)</u>	<u>(39,611)</u>
Net cash provided by (used in) operating activities	<u>134,559</u>	<u>122,490</u>
Cash Flows from Investing Activities		
Additions to capital assets	(31,997)	(13,068)
Proceeds from disposal of assets	<u>2,000</u>	<u>-</u>
Net cash provided by (used in) investing activities	<u>(29,997)</u>	<u>(13,068)</u>
INCREASE/(DECREASE) IN CASH	104,562	109,422
CASH AND CASH EQUIVALENTS, beginning of year	<u>447,607</u>	<u>338,185</u>
CASH AND CASH EQUIVALENTS, end of year	\$ <u>552,169</u>	\$ <u>447,607</u>
 *Consisting of changes in:		
Licence fees payable	\$ -	(23,980)
Prepaid expenses	2,370	(4,813)
Accounts payable	2,924	(27,237)
Gratuity payable	<u>(22,940)</u>	<u>16,419</u>
	<u>\$ (17,646)</u>	<u>\$ (39,611)</u>

The accompanying notes form an integral part of these statements.

THE NATIONAL TELECOMMUNICATIONS REGULATORY COMMISSION

NOTES TO THE FINANCIAL STATEMENTS

SEPTEMBER 30, 2007

1. INTRODUCTION

The National Telecommunications Regulatory Commission was established by the Telecommunications Act Cap. 8.11 of the 2001 Revised Edition Laws of St.Lucia on the 22nd November 2000. The Commission commenced operations on March 18, 2002.

The principal activity of the Commission is to execute the functions defined in Section 11 of the Telecommunications Act Cap. 8.11 in the regulation of Telecommunications in Saint Lucia.

2. SIGNIFICANT ACCOUNTING POLICIES

(a) Basis of Presentation

These statements are prepared in accordance with International Financial Reporting Standards which comprise standards issued or adopted by the International Accounting Standards Board and interpretations issued by its Standing Interpretations Committee. They have been prepared under the historical cost convention and are expressed in Eastern Caribbean Dollars. There have been no changes in accounting policy from the previous year. Receipts and expenditure are accounted for on the accrual basis of accounting.

(b) Cash and cash equivalents

Cash and cash equivalents comprise cash on hand and demand and short term deposits with original maturities of less than one year. For the purpose of the cash flow statement, cash and cash equivalents comprise balances of cash on hand and current accounts less any bank overdraft balances

(c) Property, Plant and Equipment

Property, Plant and Equipment, are stated at historical cost less accumulated depreciation. Additions to Property, Plant and Equipment are recorded at cost. Depreciation is calculated on the straight line basis, so as to write off the cost of each asset over their estimated useful lives as follows: -

Furniture & equipment	- 15% - 25%
-----------------------	-------------

(d) Accounts payable

Trade accounts, other payables and accrued liabilities represent the principal amounts outstanding at the balance sheet date plus, where applicable, any accrued interest.

(e) Revenue recognition

Revenue is recognised when the agreed Contributions become due and on the completion of other service transactions when the related fees can be reliably estimated.

(f) Income Tax

The Commission is exempt from Income Tax under the provisions of the Telecommunications Act.

THE NATIONAL TELECOMMUNICATIONS REGULATORY COMMISSION

NOTES TO THE FINANCIAL STATEMENTS

SEPTEMBER 30, 2007

3. FINANCIAL RISK MANAGEMENT

In accordance with the provisions of International Accounting Standard No. 32, disclosure is required regarding credit risks, interest rates and fair values of financial assets and liabilities.

(a) Credit risk

Credit risk arises from the possibility that counterparties may default on their obligations to the Commission. The Commission is not exposed to any significant credit risks.

(b) Interest Rate Risk

Differences in contractual repricing or maturity dates and changes in interest rates may expose the Commission to interest rate risk. The Commission's exposure and interest rates are restricted to the interest paid on its savings and operating accounts.

(c) Fair Value of Financial Instruments

Fair value amounts represent estimates of the consideration that would currently be agreed upon between knowledgeable, willing parties who are under no compulsion to act and are best evidenced by quoted market values, if they exist. None of the Commission's financial assets and liabilities are traded in a formal market. Estimated fair values are assumed to approximate their carrying values.

(d) Liquidity Risk

The Commission is exposed to the risk that it may encounter difficulties in raising funds to meet its commitments. Management seeks to maintain levels of cash sufficient to meet reasonable expectations of its short term obligations.

4. PROPERTY PLANT & EQUIPMENT

	<u>Furniture & Equipment</u>	
	<u>2007</u>	<u>2006</u>
COST		
Balance at beginning of year	\$ 171,483	\$ 158,415
Additions	31,997	13,068
Disposals	<u>(4,770)</u>	<u>-</u>
Balance at end of year	<u>198,710</u>	<u>171,483</u>
DEPRECIATION		
Balance at beginning of year	\$ 54,370	\$ 33,497
Depreciation for the year	23,102	20,873
Disposals	<u>(3,616)</u>	<u>-</u>
Balance at end of year	<u>73,856</u>	<u>54,370</u>
Book Value end of year	<u>\$ 124,854</u>	<u>\$ 117,113</u>

NOTES TO THE FINANCIAL STATEMENTS

SEPTEMBER 30, 2007

5. CONTRIBUTED FUNDS

These funds have been provided by the Government of St.Lucia as a contribution towards the purchase of Assets for the Commission. The funds were amortized over a period of five years on a straight line basis commencing 2003 .

6. COMPARATIVE FIGURES

Where changes have been made in the presentation of the current year's figures, comparative amounts have been restated.

APPENDIX C:

Telecommunications Licences that have been Issued, Modified, Renewed or Revoked in Saint Lucia

Telecommunications Licences that have been Issued, Modified, Renewed or Revoked in Saint Lucia

as at September 30, 2007

Pursuant to sub-section 14(7)(a) of the Telecommunications Act, No. 27 of 2000 and in keeping with its records, the National Telecommunications Regulatory Commission hereby lists the telecommunications licences that have been issued, modified, renewed or revoked in Saint Lucia by the Minister, as at September 30, 2007

Telecommunications Licences Issued

- (i) For the Establishment and Operation of a Fixed Public Telecommunications Network and the Provision of Certain Fixed Public Telecommunications Services in Saint Lucia

Licensee	Date Issued
Cable & Wireless (West Indies) Limited	October 11 th , 2001

- (ii) For the Establishment and Operation of a Public Cellular Mobile Telecommunications Network and the Provision of Public Cellular Mobile Telecommunications Services in Saint Lucia

Licensee	Date Issued
Cable & Wireless Caribbean Cellular (St. Lucia) Limited	October 11 th , 2001
Digicel (St. Lucia) Limited	September 6 th , 2002
Wireless Ventures (St. Lucia) Limited, transferred from AWS Caribbean Holdings Limited ¹	September 10 th , 2006

- (iii) For the Installation and Operation of an Internet Network and the Provision of Internet Services in Saint Lucia

Licensee	Date Issued
Cable & Wireless (West Indies) Limited	October 11 th , 2001
Antilles Crossing	April 22 nd , 2006
Link Technologies Limited	February 15 th , 2007

¹ Minister approved that transfer of the licence on February 6th, 2003.

- (iv) For the Landing of a Submarine Cable and the Establishment and Operation of a Submarine Cable Telecommunications Network and the Provision of Certain Telecommunications Services in Saint Lucia

Licensee	Date Issued
Antilles Crossing (St. Lucia) Limited	February 2 nd , 2005
Southern Caribbean Fibre Limited	August 2, 2007

- (v) For the Provision of Full Internet Services in Saint Lucia

Licensee	Date Issued
Almus McDowall (NETEL)	February 12 th , 2003
Advanced Network Associates	February 18 th , 2003

- (vi) For the Provision of Restricted Internet Services in Saint Lucia

Licensee	Date Issued
Flo Internet Services	January 8 th , 2003

- (vii) For the Resale of International Switched Minutes in Saint Lucia

Licensee	Date Issued
NCIC (Saint Lucia) Inc.	October 28 th , 2003
Global Link (St. Lucia) Limited	November 21 st , 2003
NETEL	December 5 th , 2003
CARINET Incorporated	January 10 th , 2006

- (viii) For the Establishment and Operation of a Private Telecommunications Network and Services in Saint Lucia

Licensee	Date Issued
Helen IT Systems	July 27 th , 2004
FINMAN Information Technology Unit	September 22 nd , 2004

- (ix) For the Use of Radio Frequencies in Connection with the Operation of Certain Telecommunications Networks and the Provision of Certain Telecommunications Services in Saint Lucia

4.3	Customer Premise (Inside) Wiring	12
5	Telecommunications Fees	13
5.1	Telecommunications Licence Fees	13
5.2	Frequency Authorisation (Spectrum) Fees.....	13
6	Legislative Review	14
6.1	Promulgation of Telecommunications Regulation	14
7	Tariff & Pricing	15
7.1	Services Provided	15
7.2	Service Changes	16
7.3	Telecommunications Rates in Effect in Saint Lucia.....	17
8	Other Sector Issues	17
8.1	Public Consultations	17
8.2	Mobile Termination Rates	18
8.3	Interconnection between Cable & Wireless (West Indies) Limited and Antilles Crossing (St. Lucia) Limited	18
9	2006/2007 Work Programme	19
9.1	Update on 2005/2006 Work Plan	19
9.1.1	Frameworks	19
9.1.2	Licensing of Telecommunications Users and Service Providers	19
9.1.3	Office Procedures	20
9.1.4	Internal Procedures for the Technical Unit	20
9.1.5	Sector Procedures Manual	21
9.1.6	Public Education	21
9.1.7	Amateur Radio Operations	21
9.1.8	Spectrum Monitoring	21
9.1.9	Standards Development	21
9.2	Work Plan Schedule for 2007/2008	22

Licensee	Date Issued
Cable & Wireless (West Indies) Limited	October 11 th , 2001
Cable & Wireless Caribbean Cellular (St. Lucia) Limited	October 11 th , 2001
Link Technologies Limited	February 15 th , 2007
Helen Television Systems Limited	February 2 nd , 2007
Hit Radio Limited	June 4 th , 2007

- (x) Special Licence for the Establishment and Operation of Telecommunications Networks and the Provision of Telecommunications Services in Saint Lucia

Licensee	Date Issued
Cable & Wireless (West Indies) Limited	October 1 st , 2001

- (xi) Special Licence for Land Mobile Radio and Frequency Authorisation for Operation in Saint Lucia

Licensee	Date Issued
Discovery at Marigot Bay Limited	December 1 st , 2006

Telecommunications Licences Modified

As of September 30th, 2007, no licences have been modified.

Telecommunications Licences Renewed

As of September 30th, 2007, no licences have been renewed.

Telecommunications Licences Revoked

As of September 30th, 2007, no licences have been revoked.

*STEPHEN JULIEN
Chairman*

APPENDIX D:

Register of Type-Approved Equipment (Part 1)

APPENDIX D

1. Type Approved Equipment Ordered by Certificate Number

Certificate No.	Manufacturer	Equipment Identification	Equipment Type	Model Identifier	Date Granted
LCT/DE05.0000	Colubris Networks Inc.	MultiService Access Point - Outdoor	Wireless LAN	MAP-320R	December 15, 2005
LCT/DE05.0001	Colubris Networks Inc.	MultiService Gateway	Wireless LAN	MGW-1250	December 15, 2005
LCT/DE05.0002	Colubris Networks Inc.	MultiService Access Point - Indoor	Wireless LAN	MSC-3300	December 15, 2005
LCT/DE05.0003	Colubris Networks Inc.	MultiService Access Point - Indoor	Wireless LAN	MSC-3200	December 15, 2005
LCT/DE05.0004	Colubris Networks Inc.	MultiService Access Point - Indoor	Wireless LAN	MAP-320	December 15, 2005
LCT/DE05.0005	Colubris Networks Inc.	MultiService Access Point - Indoor	Wireless LAN	MAP-330	December 15, 2005
LCT/DE05.0006	Colubris Networks Inc.	MultiService Controller - Outdoor	Wireless LAN	MSC-3200R	December 15, 2005
LCT/DE05.0007	Kirk Telecom	Digital Mobility Handset 7434 - SAM Unit	Digital Mobility System	NT7B80AC	December 15, 2005
LCT/DE05.0008	Kirk Telecom	Digital Mobility Base Station 14 - SAM Unit	Digital Mobility System	NT7B80AE	December 15, 2005
LCT/DE05.0009	Kirk Telecom	Digital Mobility Repeater 24	Digital Mobility System	NT7B80AF	December 15, 2005
LCT/DE05.000A	Kirk Telecom	2.4 GHz Communications System	Digital Mobility System	PP4-2G4	December 15, 2005
LCT/DE05.000B	Kirk Telecom	2.4 GHz Communications System	Digital Mobility System	RFP4-2G4	December 15, 2005
LCT/DE05.000C	Kirk Telecom	2.4 GHz Communications System	Digital Mobility System	WRF4-2G4	December 15, 2005
LCT/DE05.000D	Intel Corporation	Intel ProWireless Network Connection	Wireless LAN	WM3B2915ABG	December 15, 2005
LCT/DE05.000E	Intel Corporation	Intel ProWireless Network Connection	Wireless LAN	WM3A2915ABG	December 15, 2005

APPENDIX D

Certificate No.	Manufacturer	Equipment Identification	Equipment Type	Model Identifier	Date Granted
LCT/DE05.000F	IBM	Printer Toner Monitoring and Control (Infprint Color 1567)	Radio Frequency Identification Device	4935-n02	December 15, 2005
LCT/DE05.0010	Lexmark International Inc.	Printer Toner Monitoring and Control (C920dn)	Radio Frequency Identification Device	5056-030	December 15, 2005
LCT/DE05.0011	Fuji Xerox Corporation Limited	Toner Cartridge Identification and Monitoring System	Radio Frequency Identification Device	KDRF	December 15, 2005
LCT/DE05.0012	IBM	Printer Toner Monitoring and Control (Infprint Color 1567)	Radio Frequency Identification Device	4935-dn2	December 15, 2005
LCT/DE05.0013	Lexmark International Inc.	Printer Toner Monitoring and Control (C920)	Radio Frequency Identification Device	5056-000	December 15, 2005
LCT/DE05.0014	Lexmark International Inc.	Printer Toner Monitoring and Control (C920n)	Radio Frequency Identification Device	5056-010	December 15, 2005
LCT/DE05.0015	Lexmark International Inc.	Printer Toner Monitoring and Control (C920dn)	Radio Frequency Identification Device	5056-030	December 15, 2005
LCT/DE05.0016	Lear Corporation	RKE/TPM 315 MHz Receiver	Automotive Security/Convenience Receiver	FR04U204	December 15, 2005
LCT/DE05.0017	Lear Corporation	Lear Ford Ranger 315 MHz RKE/TPM Receiver	Automotive Security/Convenience Receiver	FR06U251	December 15, 2005
LCT/DE05.0018	Lear Corporation	Tyre Pressure Monitor Sensor	Telemetry Apparatus	7C2A-1A176	December 15, 2005
LCT/DE05.001A	Delphi Delco Electronic Systems	RKE/TPM 315 MHz Receiver	Security/Convenience Receiver	SJB S197-06	December 15, 2005
LCT/DE05.001B	Delphi Delco Electronic Systems	RKE/TPM 315 MHz Receiver	Security/Convenience Receiver	SJB V229-06	December 15, 2005
LCT/DE05.001C	Delphi Delco Electronic Systems	RKE/TPM 315 MHz Receiver	Security/Convenience Receiver	SJB S197	December 15, 2005
LCT/DE05.001D	Delphi Delco Electronic Systems	RKE/TPM 315 MHz Receiver	Security/Convenience Receiver	SJB V229	December 15, 2005
LCT/DE05.001E	Mitsubishi Electric Corporation, Hirmeji Works	Immobiliser System	Vehicle Security System	IMB122-01	December 15, 2005

APPENDIX E:

Register of Dealers and Suppliers of Terminal Equipment and Related Services

Register of Suppliers of Terminal Equipment and Related Services
 (sorted by registration date)

Registration Date	Registrant Name	Registration No.
November 10, 2005	Kent's Hi Tech Electronics	LSTE/NO05.0001
December 15, 2005	CLICKCOM	LSTE/NO05.0002
December 15, 2005	Cox Radio Limited	LSTE/NO05.0003
August 31, 2006	CALIDAD Services	LSTE/AU06.0004
August 31, 2006	Communications Systems & Services Ltd.	LSTE/AU06.0005
September 27, 2006	N. V. Commercial Services Limited	LSTE/SP06.0006
September 27, 2006	Icon Security & Private Investigation Services Limited	LSTE/SP06.0007
October 16, 2006	Johnsons Hardware Limited	LSTE/OC06.0008
January 26, 2007	Island Water World (St. Lucia) Limited	LSTE/JA07.0009
March 30, 2007	Phone Links	LSTE/MR07.0010
April 24, 2007	G & G Ltd.	LSTE/AP07.0011

APPENDIX F

List of Telecommunications Rates that are in Effect in Saint Lucia

Telecommunications Rates that are in Effect in Saint Lucia

Provider	Product	Type	Prices
CWWI	Basic Fixed Telephony Service		
	Direct Exchange Line Residential	Rental	\$26.40
	Direct Exchange Line Residential	Installation	\$125.00
	Direct Exchange Line Business	Rental	\$48.00
	Direct Exchange Line Business	Installation	\$125.00
	Fixed to Fixed - Day	Minute	\$0.07
	Fixed to Fixed - Night	Minute	\$0.04
	Fixed to Fixed - Weekend	Minute	\$0.04
	Fixed to Mobile - Day	Minute	\$0.71
	Fixed to Mobile - Night	Minute	\$0.69
	Fixed to Mobile - Weekend	Minute	\$0.69
CWWI	Value Added Services (Fixed Line Telephony)		
	SmartChoice Business Plan A	Rental	\$68.00
	SmartChoice Business Plan B	Rental	\$72.00
	SmartChoice Business Plan C	Rental	\$76.00
	SmartChoice Residential Plan	Rental	\$39.40
	SmartChoice Residential Plan (If this is a new line)	Installation	\$125.00
	Exch Feature Call Transfer	Rental	\$8.00
	Exch Feature Customer Controlled Bar Int	Rental	\$8.00
	Exch Feature Hold For Enquiry	Rental	\$8.00
	Exch Feature Hot Line	Rental	\$15.00
	Exch Feature Hot Line	Installation	\$50.00
	Exch Feature Bar IDD	Rental	\$15.00
	Exch Feature Bar IDD	Installation	\$50.00
	Exch Feature Bar FTM - Residential	Rental	\$15.00
	Exch Feature Bar FTM - Business	Rental	\$25.00
	Exch Feature Forwarding/Pager	Rental	\$5.00
	Exch Feature Extended Voicemail/Pager	Rental	\$5.00
	Exch Feature Extended Alphanumeric	Rental	\$5.00
	Exch Feature Group Page Header	Rental	\$10.00
	Exchange Feature Voicemail - Residential	Rental	\$7.00
	Exchange Feature Voicemail - Residential	Installation	\$10.00
	Exchange Feature Voice Mail - Business	Rental	\$15.00
	Exchange Feature Voice Mail - Business	Installation	\$10.00
	Additional Mailbox - Business	Rental	\$5.00
	Additional Mailbox - Business	Installation	\$10.00
	Direct Exchange Line 900	Rental	\$40.00

10 Final Remarks 23

Appendices

Appendix A: Diary of Key Events

Appendix B: Financial Audit Report

Appendix C: List of the Telecommunications Licences that have been Issued, Modified, Renewed or Revoked in Saint Lucia

Appendix D: Register of Type-Approved Equipment (Part I)

Appendix E: Register of Dealers and Suppliers of Terminal Equipment and Related Services

Appendix F: List of Telecommunications Rates that are in effect in Saint Lucia

Appendix G: 2006/2007 Work Plan Schedule

APPENDIX F

Provider	Product	Type	Prices
	Ex-directory	listing	\$5.00
	Voice Mail Ultra	Rental	\$25.00
	Voice Mail Ultra	Installation	\$15.00
	Voicemail Family Box	Rental	\$3.00
	Voicemail Family Box	Installation	\$10.00
	Magic Touch Call Fwd/Call Barring	Rental	\$7.00
	Magic Touch Call Waiting/Call Barring	Rental	\$7.00
	Magic Touch Call Barring/Confernce Call	Rental	\$7.00
	Magic Touch Call Fwd/Call Wait/Call Bar.	Rental	\$12.00
	Magic Touch Call Fwd/Conf Call/Call Bar.	Rental	\$12.00
	Magic Touch Call Waiting	Rental	\$8.00
	Magic Touch Conference Calling	Rental	\$8.00
	Magic Touch Call Fwd/Call Wait	Rental	\$7.00
	Magic Touch Call Fwd/Conf Call	Rental	\$7.00
	Magic Touch Call Wait/Conf Call	Rental	\$7.00
	Magic Touch Call Fwd/Call Wait/Conf Call	Rental	\$12.00
	Magic Touch Call Barring	Rental	\$8.00
	Magic Touch Call Forwarding	Rental	\$8.00
	Magic Touch Caller ID	Rental	\$9.00
	Magic Touch Caller ID w/Add-on Display	Rental	\$16.00
	Magic Touch Call Return	Rental	\$8.00
	Magic Touch Single Package	Rental	\$3.00
	Magic Touch Double Package	Rental	\$8.00
	Magic Touch Triple Package	Rental	\$13.00
	Magic Touch Full Package	Rental	\$17.00
	Magic Touch Quad Package	Rental	\$18.00
	Telex call return	Rental	\$8.00
	Telex Caller ID (Without Display)	Rental	\$9.00
	Telex Caller ID with add-on Display	Rental	\$16.00
	Telex Caller ID with additional Display	Rental	\$10.00
	Telex Five feature welcome package	Rental	\$20.00
	Ring again	Rental	\$8.00
CWWI	Private Wire (no longer open to new subscribers)		
	Private Wire 0 - 110 Yds	Rental	\$46.00
	Private Wire 220 - 440 Yds	Rental	\$22.00
	Private Wire 220 - 440 Yds	Installation	\$74.00
	Private Wire 440 - 880 Yds	Rental	\$30.00
	Private Wire 0.50 - 0.75 Miles	Rental	\$38.00
	Private Wire 0.75 - 1.00 Miles	Rental	\$46.00
	Private Wire 1.00 - 1.25 Miles	Rental	\$54.00
	Private Wire 1.25 - 1.50 Miles	Rental	\$62.00

APPENDIX F

Provider	Product	Type	Prices
	Private Wire 1.50 - 1.75 Miles	Rental	\$70.00
	Private Wire 1.75 - 2.00 Miles	Rental	\$78.00
	Private Wire 2.00 - 2.25 Miles	Rental	\$86.00
	Private Wire 2.25 - 2.50 Miles	Rental	\$94.00
	Private Wire 2.75 - 3.00 Miles	Rental	\$180.00
	Private Wire Different Exchange	Rental	\$180.00
	Private Wire Different Exchange	Installation	\$100.00
	Private Wire Step Charge	Rental	\$8.00
CWWI	Domestic Private Leased Circuit		
	DPLC 28.8k	Rental	\$300.00
	DPLC 28.8k	Installation	\$540.00
	DPLC 64kbit	Rental	\$1,100.00
	DPLC 64kbit	Installation	\$800.00
	DPLC 128kbit.	Rental	\$1,980.00
	DPLC 128kbit	Installation	\$800.00
	DPLC 256 Kbps	Rental	\$2,500.00
	DPLC 256 Kbps	Installation	\$1,000.00
	DPLC 512 Kbps	Rental	\$2,980.00
	DPLC 512 Kbps	Installation	\$1,500.00
	DPLC 768 Kbps	Rental	\$3,450.00
	DPLC 768 Kbps	Installation	\$2,000.00
	DPLC 1024 Kbps	Rental	\$3,980.00
	DPLC 1024 Kbps	Installation	\$2,000.00
	DPLC 1.5mbit (T1)	Rental	\$4,200.00
	DPLC 1.5mbit (T1)	Installation	\$2,000.00
	DPLC 2mbit (E1)	Rental	\$4,500.00
	DPLC 2mbit (E1)	Installation	\$2,000.00
CWWI	International Private Leased Circuit		
	IPLC Caribbean 1A 2.4 Kbits (Group 1)	Rental	\$936.00
	IPLC Caribbean 1A 2.4 Kbits (Group 1)	Installation	\$1,350.00
	IPLC Caribbean 1A 4.8 Kbits (Group 1)	Rental	\$1,040.00
	IPLC Caribbean 1A 4.8 Kbits (Group 1)	Installation	\$1,350.00
	IPLC Caribbean 1A 9.6 Kbits (Group 1)	Rental	\$1,170.00
	IPLC Caribbean 1A 9.6 Kbits (Group 1)	Installation	\$1,350.00
	IPLC Caribbean 1A 56/64 Kbits (Group 1)	Rental	\$2,150.00
	IPLC Caribbean 1A 56/64 Kbits (Group 1)	Installation	\$1,350.00
	IPLC 128 kbits Band 1a (Group 1)	Rental	\$3,870.00
	IPLC 128 kbits Band 1a (Group 1)	Installation	\$1,350.00
	IPLC Caribbean 192 Kbits (Group 1)	Rental	\$5,440.00
	IPLC Caribbean 192 Kbits (Group 1)	Installation	\$1,350.00
	IPLC Caribbean 256 kbits Band 1a (Group 1)	Rental	\$6,746.00

APPENDIX F

Provider	Product	Type	Prices
	IPLC Caribbean 256 kbits Band 1a (Group 1)	Installation	\$1,350.00
	IPLC 320 Kbits (Group 1)	Rental	\$7,870.00
	IPLC 320 Kbits (Group 1)	Installation	\$1,350.00
	IPLC 384 Kbits (Group 1)	Rental	\$8,843.00
	IPLC 384 Kbits (Group 1)	Installation	\$1,350.00
	IPLC 768 Kbits (Group 1)	Rental	\$12,687.00
	IPLC 768 Kbits (Group 1)	Installation	\$1,350.00
	IPLC 1024 Kbits (Group 1)	Rental	\$14,272.00
	IPLC 1024 Kbits (Group 1)	installation	\$1,350.00
	IPLC 1544 Kbits (Group 1)	Rental	\$17,459.00
	IPLC 1544 Kbits (Group 1)	Installation	\$1,350.00
	IPLC 2048 kbits Band 1a (Group 1)	Rental	\$21,700.00
	IPLC 2048 kbits Band 1a (Group 1)	Installation	\$1,350.00
	IPLC 512 kbits Band 1a (Group 1)	Rental	\$10,437.00
	IPLC 512 kbits Band 1a (Group 1)	Installation	\$1,350.00
	IPLC Caribbean 1A Voicegrade	Rental	\$1,300.00
	IPLC Caribbean 1A Voicegrade	Installation	\$1,350.00
	IPLC Caribbean 1A 2 Mbits	Rental	\$21,700.00
	IPLC All Other 9.6 Kbits	Rental	\$2,080.00
	IPLC All Other 9.6 Kbits	Installation	\$1,350.00
	IPLC 56 Kbits (Group 2)	Rental	\$3,700.00
	IPLC 56 Kbits (Group 2)	Installation	\$1,350.00
	IPLC 64 kbits Band 1b (Group 2)	Rental	\$3,700.00
	IPLC 64 kbits Band 1b (Group 2)	Installation	\$1,350.00
	IPLC Caribbean 1B 128 Kbits (Group 2)	Rental	\$6,660.00
	IPLC Caribbean 1B 128 Kbits (Group 2)	Installation	\$1,350.00
	IPLC 192 Kbits (Group 2)	Rental	\$9,435.00
	IPLC 192 Kbits (Group 2)	Installation	\$1,350.00
	IPLC 256 Kbits (Group 2)	Rental	\$11,699.00
	IPLC 256 Kbits (Group 2)	Installation	\$1,350.00
	IPLC 320 Kbits (Group 2)	Rental	\$13,648.00
	IPLC 320 Kbits (Group 2)	Installation	\$1,350.00
	IPLC 384 Kbits (Group 2)	Rental	\$15,336.00
	IPLC 384 Kbits (Group 2)	Installation	\$1,350.00
	IPLC 512 Kbits (Group 2)	Rental	\$18,100.00
	IPLC 512 Kbits (Group 2)	Installation	\$1,350.00
	IPLC 768 Kbits (Group 2)	Rental	\$22,022.00
	IPLC 768 Kbits (Group 2)	Installation	\$1,350.00
	IPLC 1024 Kbits (Group 2)	Rental	\$24,750.00
	IPLC 1024 Kbits (Group 2)	Installation	\$1,350.00
	IPLC 1544 Kbits (Group 2)	Rental	\$30,276.00
	IPLC 1544 Kbits (Group 2)	Installation	\$1,350.00
	IPLC 2048 Kbits (Group 2)	Rental	\$37,200.00

APPENDIX F

Provider	Product	Type	Prices
	IPLC 2048 Kbits (Group 2)	Installation	\$1,350.00
	IPLC 56/64 kbits Band 2a (Group 3)	Rental	\$5,600.00
	IPLC 56/64 kbits Band 2a (Group 3)	Installation	\$1,350.00
	IPLC 128 Kbits (Group 3)	Rental	\$10,100.00
	IPLC 128 Kbits (Group 3)	Installation	\$1,350.00
	IPLC 192 Kbits (Group 3)	Rental	\$14,290.00
	IPLC 192 Kbits (Group 3)	Installation	\$1,350.00
	IPLC 256 Kbits Group 3	Rental	\$17,720.00
	IPLC 256 Kbits Group 4	Installation	\$1,350.00
	IPLC 320 Kbits (Group 3)	Rental	\$20,671.00
	IPLC 320 Kbits (Group 3)	Installation	\$1,350.00
	IPLC 384 Kbits (Group 3)	Rental	\$23,227.00
	IPLC 384 Kbits (Group 3)	Installation	\$1,350.00
	IPLC 512 Kbits (Group 3)	Rental	\$27,414.00
	IPLC 512 Kbits (Group 3)	Installation	\$1,350.00
	IPLC 768 Kbits (Group 3)	Rental	\$33,324.00
	IPLC 768 Kbits (Group 3)	Installation	\$1,350.00
	IPLC 1024 Kbits (Group 3)	Rental	\$37,487.00
	IPLC 1024 Kbits (Group 3)	Installation	\$1,350.00
	IPLC 1544 Kbits (Group 3)	Rental	\$45,856.00
	IPLC 1544 Kbits (Group 3)	Installation	\$1,350.00
	IPLC 2048 Kbits (Group 3)	Rental	\$56,200.00
	IPLC 2048 Kbits (Group 3)	Installation	\$1,350.00
	IPLC Caribbean 2B 56/64 Kbits (Group 4)	Rental	\$7,600.00
	IPLC Caribbean 2B 56/64 Kbits (Group 4)	Installation	\$1,350.00
	IPLC 128 Kbits (Group 4)	Rental	\$13,700.00
	IPLC 128 Kbits (Group 4)	Installation	\$1,350.00
	IPLC 192 Kbits (Group 4)	Rental	\$19,352.00
	IPLC 192 Kbits (Group 4)	Installation	\$1,350.00
	IPLC 256 Kbits (Group 4)	Rental	\$23,996.00
	IPLC 256 Kbits (Group 4)	Installation	\$1,350.00
	IPLC 320 Kbits (Group 4)	Rental	\$27,993.00
	IPLC 320 Kbits (Group 4)	Installation	\$1,350.00
	IPLC 384 Kbits (Group 4)	Rental	\$31,455.00
	IPLC 384 Kbits (Group 4)	Installation	\$1,350.00
	IPLC 512 Kbits (Group 4)	Rental	\$37,124.00
	IPLC 512 Kbits (Group 4)	Installation	\$1,350.00
	IPLC 768 Kbits (Group 4)	Rental	\$45,128.00
	IPLC 768 Kbits (Group 4)	Installation	\$1,350.00
	IPLC 1024 Kbits (Group 4)	Rental	\$50,765.00
	IPLC 1024 Kbits (Group 4)	Installation	\$1,350.00
	IPLC 1544 Kbits (Group 4)	Rental	\$62,099.00
	IPLC 1544 Kbits (Group 4)	Installation	\$1,350.00
	IPLC 2048 Kbits (Group 4)	Rental	\$76,200.00

APPENDIX F

Provider	Product	Type	Prices
	IPLC 2048 Kbits (Group 4)	Installation	\$1,350.00
	IPLC Caribbean 1B Voicegrade	Rental	\$2,160.00
	IPLC Caribbean 1B Voicegrade	Installation	\$1,350.00
	IPLC 56/64 kbits Band 3 (Group 5)	Rental	\$8,100.00
	IPLC 56/64 kbits Band 3 (Group 5)	Installation	\$1,350.00
	IPLC 128 kbits Band 3 (Group 5)	Rental	\$14,864.00
	IPLC 128 kbits Band 3 (Group 5)	Installation	\$1,350.00
	IPLC 192 Kbits (Group 5)	Rental	\$20,660.00
	IPLC 192 Kbits (Group 5)	Installation	\$1,350.00
	IPLC 256 Kbits (Group 5)	Rental	\$25,618.00
	IPLC 256 Kbits (Group 5)	Installation	\$1,350.00
	IPLC 320 Kbits (Group 5)	Rental	\$29,886.00
	IPLC 320 Kbits (Group 5)	Installation	\$1,350.00
	IPLC 384 Kbits (Group 5)	Rental	\$33,583.00
	IPLC 384 Kbits (Group 5)	Installation	\$1,350.00
	IPLC 512 Kbits (Group 5)	Rental	\$39,633.00
	IPLC 512 Kbits (Group 5)	Installation	\$1,350.00
	IPLC 768 Kbits (Group 5)	Rental	\$48,179.00
	IPLC 768 Kbits (Group 5)	Installation	\$1,350.00
	IPLC 1024 Kbits (Group 5)	Rental	\$54,197.00
	IPLC 1024 Kbits (Group 5)	Installation	\$1,350.00
	IPLC 1544 Kbits (Group 5)	Rental	\$64,530.00
	IPLC 1544 Kbits (Group 5)	Installation	\$1,350.00
	IPLC 2048 Kbits (Group 5)	Rental	\$86,130.00
	IPLC 2048 Kbits (Group 5)	Installation	\$1,350.00
	IPLC 56/64 Kbits (Group 6)	Rental	\$17,200.00
	IPLC 56/64 Kbits (Group 6)	Installation	\$1,350.00
	IPLC 128 Kbits (Group 6)	Rental	\$30,800.00
	IPLC 128 Kbits (Group 6)	Installation	\$1,350.00
	IPLC 192 Kbits (Group 6)	Rental	\$43,868.00
	IPLC 192 Kbits (Group 6)	Installation	\$1,350.00
	IPLC 256 Kbits (Group 6)	Rental	\$54,397.00
	IPLC 256 Kbits (Group 6)	Installation	\$1,350.00
	IPLC 320 Kbits (Group 6)	Rental	\$63,457.00
	IPLC 320 Kbits (Group 6)	Installation	\$1,350.00
	IPLC 384 Kbits (Group 6)	Rental	\$71,305.00
	IPLC 384 Kbits (Group 6)	Installation	\$1,350.00
	IPLC 512 Kbits (Group 6)	Rental	\$84,156.00
	IPLC 512 Kbits (Group 6)	Installation	\$1,350.00
	IPLC 768 Kbits (Group 6)	Rental	\$102,302.00
	IPLC 768 Kbits (Group 6)	Installation	\$1,350.00
	IPLC 1024 Kbits (Group 6)	Rental	\$115,079.00

APPENDIX F

Provider	Product	Type	Prices
	IPLC 1024 Kbits (Group 6)	Installation	\$1,350.00
	IPLC 1544 Kbits (Group 6)	Rental	\$140,773.00
	IPLC 1544 Kbits (Group 6)	Installation	\$1,350.00
	IPLC 2048 kbits Band 1a	Installation	\$1,350.00
	IPLC 2048 kbits Band 4 (Group 6)	Rental	\$170,200.00
	64 Port Charge	Rental	
	128 Port Charge	Rental	\$1,429.00
CWWI	Frame Relay		
	Frame Access Charge 64k	Rental	\$1,688.00
	Frame Access Charge 64k	Installation	\$2,717.00
	Frame Relay Access Charge 128k	Rental	\$2,195.00
	Frame Relay Access Charge 128k	Installation	\$2,717.00
	Frame Relay Access Charge 192k	Rental	\$2,700.00
	Frame Relay Access Charge 192k	Installation	\$2,717.00
	Frame Relay Access Charges 256k	Rental	\$3,208.00
	Frame Relay Access Charges 256k	Installation	\$2,717.00
	Frame Relay Access Charles 384k	Rental	\$3,713.00
	Frame Relay Access Charles 384k	Installation	\$2,717.00
	Frame Relay Access Charges 512k	Rental	\$4,220.00
	Frame Relay Access Charges 512k	Installation	\$2,717.00
	Frame Relay Access Charge 768k	Rental	\$5,570.00
	Frame Relay Access Charge 768k	Installation	\$2,717.00
	Frame Relay Access Charge 1024k	Rental	\$6,583.00
	Frame Relay Access Charge 1024k	Installation	\$2,717.00
	Frame Relay Access Charge 1544k	Rental	\$8,438.00
	Frame Relay Access Charge 1544k	Installation	\$2,717.00
	Frame Relay Access Charge 2048k	Rental	\$10,970.00
	Frame Relay Access Charge 2048k	Installation	\$3,375.00
	Frame Relay Access Charge 4M	Rental	\$21,433.00
	Frame Relay Access Charge 4M	Installation	\$3,375.00
	Frame Relay Access Charge 6M	Rental	\$31,558.00
	Frame Relay Access Charge 6M	Installation	\$3,375.00
	Frame Relay Access Charge 8M	Rental	\$41,683.00
	Frame Relay Access Charge 8M	Installation	\$3,375.00
	Frame Relay Access Charge 10M	Rental	\$51,470.00
	Frame Relay Access Charge 10M	Installation	\$3,375.00
	Frame Relay PVC Charge Zone 1 16kbps CIR	Rental	\$860.00
	Frame Relay PVC Charge Zone 1 24kbps CIR	Rental	\$1,013.00
	Frame Relay PVC Charge Zone 1 32kbps CIR	Rental	\$1,013.00
	Frame Relay PVC Charge Zone 1 48kbps CIR	Rental	\$1,013.00
	Frame Relay PVC Charge Zone 1 54kbps CIR	Rental	\$1,688.00

APPENDIX F

Provider	Product	Type	Prices
	Frame Relay PVC Charge Zone 1 64kbps CIR	Rental	\$1,688.00
	Frame Relay PVC Charge Zone 1 96kbps CIR	Rental	\$1,688.00
	Frame Relay PVC Charge Zone 1 128kbps CIR	Rental	\$2,533.00
	Frame Relay PVC Charge Zone 1 192k Cir	Rental	\$3,208.00
	Frame Relay PVC Charge Zone 1 256K Cir	Rental	\$3,713.00
	Frame Relay PVC Charge Zone 1 384K Cir	Rental	\$5,400.00
	Frame Relay PVC Charge Zone 1 512K Cir	Rental	\$6,920.00
	Frame Relay PVC Charge Zone 1 768k Cir	Rental	\$10,125.00
	Frame Relay PVC Charge Zone 1 1024k Cir	Rental	\$10,800.00
	Frame Relay PVC Charge Zone 1 1544k Cir	Rental	\$13,500.00
	Frame Relay PVC Charge Zone 1 2048k Cir	Rental	\$16,875.00
	Frame Relay PVC Charge Zone 1 4Mbps	Rental	-
	Frame Relay PVC Charge Zone 2 16kbps Cir	Rental	\$1,688.00
	Frame Relay PVC Charge Zone 2 24kbps CIR	Rental	\$1,688.00
	Frame Relay PVC Charge Zone 2 32 kbps CIR	Rental	\$1,688.00
	Frame Relay PVC Charge Zone 2 48kbps Cir	Rental	\$1,688.00
	Frame Relay PVC Charge Zone 2 56kbps Cir	Rental	\$2,363.00
	Frame Relay PVC Charge Zone 2 64kbps Cir	Rental	\$2,363.00
	Frame Relay PVC Charge Zone 2 96kbps Cir	Rental	\$2,363.00
	Frame Relay PVC Charge Zone 2 128kbps Cir	Rental	\$3,038.00
	Frame Relay PVC Charge Zone 2 192kbps Cir	Rental	\$4,388.00
	Frame Relay PVC Charge Zone 2 256kbps Cir	Rental	\$5,570.00
	Frame Relay PVC Charge Zone 2 384kbps Cir	Rental	\$7,933.00
	Frame Relay PVC Charge Zone 2 512kbps Cir	Rental	\$10,463.00
	Frame Relay PVC Charge Zone 2 768kbps Cir	Rental	\$14,345.00
	Frame Relay PVC Charge Zone 2 1024bps Cir	Rental	\$17,383.00
	Frame Relay PVC Charge Zone 2 1544kbps Cir	Rental	\$23,625.00
	Frame Relay PVC Charge Zone 2 2048kbps Cir	Rental	\$28,350.00
	Frame Relay PVC Charge Zone 2 4Mbps Cir	Rental	\$54,000.00
	Frame Relay PVC Charge Zone 3 16kbps Cir	Rental	\$1,771.00
	Frame Relay PVC Charge Zone 3 24kbps Cir	Rental	\$1,771.00
	Frame Relay PVC Charge Zone 3 32 kbps Cir	Rental	\$1,771.00
	Frame Relay PVC Charge Zone 3 48kbps Cir	Rental	\$1,771.00
	Frame Relay PVC Charge Zone 3 56kbps Cir	Rental	\$3,038.00
	Frame Relay PVC Charge Zone 3 64kbps Cir	Rental	\$3,038.00
	Frame Relay PVC Charge Zone 3 96kbps Cir	Rental	\$4,304.00
	Frame Relay PVC Charge Zone 3 128kbps Cirf	Rental	\$5,654.00
	Frame Relay PVC Charge Zone 3 192kbps Cir	Rental	\$7,341.00
	Frame Relay PVC Charge Zone 3 256kbps Cir	Rental	\$9,620.00
	Frame Relay PVC Charge Zone 3 384kbps Cir	Rental	\$11,645.00
	Frame Relay PVC Charge Zone 3 512kbps Cir	Rental	\$14,513.00
	Frame Relay PVC Charge Zone 3 768kbps Cir	Rental	\$19,408.00

APPENDIX F

Provider	Product	Type	Prices
	Frame Relay PVC Charge Zone 3 1024bps Cir	Rental	\$22,950.00
	Frame Relay PVC Charge Zone 3 1544kbps Cir	Rental	\$25,650.00
	Frame Relay PVC Charge Zone 3 2048kbps Cir	Rental	\$31,220.00
	Frame Relay PVC Charge Zone 3 4Mbps Cir	Rental	\$60,750.00
	Frame Relay PVC Charge Zone 4 16kbits CIR	Rental	\$1,941.00
	Frame Relay PVC Charge Zone 4 24kbits CIR	Rental	\$1,941.00
	Frame Relay PVC Charge Zone 4 32kbits CIR	Rental	\$1,941.00
	Frame Relay PVC Charge Zone 4 48kbits CIR	Rental	\$1,941.00
	Frame Relay PVC Charge Zone 4 56kbits CIR	Rental	\$3,545.00
	Frame Relay PVC Charge Zone 4 64kbits CIR	Rental	\$3,545.00
	Frame Relay PVC Charge Zone 4 96kbps Cir	Rental	\$5,063.00
	Frame Relay PVC Charge Zone 4 128kbps Cir	Rental	\$3,962.00
	Frame Relay PVC Charge Zone 4 192kbps Cir	Rental	\$8,775.00
	Frame Relay PVC Charge Zone 4 256kbps Cir	Rental	\$11,308.00
	Frame Relay PVC Charge Zone 4 384kbps Cir	Rental	\$13,500.00
	Frame Relay PVC Charge Zone 4 512kbps Cir	Rental	\$16,454.00
	Frame Relay PVC Charge Zone 4 768kbps Cir	Rental	\$21,433.00
	Frame Relay PVC Charge Zone 4 1024kbps Cir	Rental	\$25,313.00
	Frame Relay PVC Charge Zone 4 1544kbps Cir	Rental	\$28,350.00
	Frame Relay PVC Charge Zone 4 2048kbps Cir	Rental	\$34,258.00
	Frame Relay PVC Charge Zone 4 4Mbps Cir	Rental	\$69,358.00
	Port & Local Frame Access 56 kbits	Rental	\$1,688.00
	Port & Local Frame Access 64 kbits	Rental	\$1,688.00
	Port & Local Frame Access 128 kbits	Rental	\$2,195.00
	Port & Local Frame Access 192 kbits	Rental	\$2,700.00
	Port & Local Frame Access 256 kbits	Rental	\$3,208.00
	Port & Local Frame Access 384 kbits	Rental	\$3,713.00
	Port & Local Frame Access 512 kbits	Rental	\$4,220.00
	Port & Local Frame Access 1536 kbits	Rental	\$8,438.00
	Port & Local Frame Access 1536 kbits		\$2,717.00
	Frame Relay Port 64kbps	Rental	\$440.00
	Frame Relay Port 64kbps	Installation	\$400.00
	Frame Relay Port 128kbps	Rental	\$750.00
	Frame Relay Port 128kbps	Installation	\$400.00
	Frame Relay Port 256kbps	Rental	\$1,380.00
	Frame Relay Port 256kbps	Installation	\$400.00
	Frame Relay Port 512kbps	Rental	\$1,550.00
	Frame Relay Port 512kbps	Installation	\$400.00
	Frame Relay Port 2048kbps	Rental	\$1,845.00
	Frame Relay Port 2048kbps	Installation	\$400.00
	16k on-island PVC	Rental	\$40.00
	32kbit/s cir Main PVC	Rental	\$60.00

APPENDIX F

Provider	Product	Type	Prices
	64kbit/s cir Main PVC	Rental	\$90.00
	96kbits cir Main PVC	Rental	\$115.00
	128kbit/s cir Main PVC	Rental	\$130.00
	192kbit/s cir Main PVC	Rental	\$170.00
	256kbit/s cir Main PVC	Rental	\$195.00
	512kbit/s cir Main PVC	Rental	\$290.00
	768kbit/s cir Main PVC	Rental	\$370.00
	1024kbit/s cir Main PVC	Rental	\$430.00
	1536kbit/s cir Main PVC	Rental	\$550.00
	Provide E1 digital Trunk Lines	Rental	\$2,500.00
	Provide E1 digital Trunk Lines	Installation	\$2,000.00
	ISDN Basic Rate Line (Business)	Rental	\$165.00
	ISDN Basic Rate Line (Business)	Installation	\$300.00
	ISDN Basic Rate Line (Residential)	Rental	\$120.00
	ISDN Basic Rate Line (Residential)	Installation	\$300.00
	Private Wire 0-110 yds	Rental	\$46.00
	Private Wire 0-110 yds	Installation	\$184.00
	Private Wire 220-110 yds	Rental	\$22.00
	Private Wire 220-110 yds	Installation	\$74.00
	Private Wire 440-88-0 yds	Rental	\$30.00
	Private Wire 440-88-0 yds	Installation	\$104.00
	Private Wire 0.50 - 0.75 miles	Rental	\$38.00
	Private Wire 0.50 - 0.75 miles	Installation	\$144.00
	Private Wire 0.75-1.00 miles	Rental	\$38.00
	Private Wire 0.75-1.00 miles	Installation	\$184.00
	Private Wire 1.00-1.25 miles	Rental	\$54.00
	Private Wire 1.00-1.25 miles	Installation	\$224.00
	Private Wire 1.25-1.50 miles	Rental	\$62.00
	Private Wire 1.25-1.50 miles	Installation	\$264.00
	Private Wire 1.50-1.75 miles	Rental	\$70.00
	Private Wire 1.50-1.75 miles	Installation	\$304.00
	Private Wire 1.75-2.00 miles	Rental	\$78.00
	Private Wire 1.75-2.00 miles	Installation	\$344.00
	Private Wire 2.00-2.25 miles	Rental	\$86.00
	Private Wire 2.00-2.25 miles	Installation	\$384.00
	Private Wire 2.25-2.50 miles	Rental	\$94.00
	Private Wire 2.25-2.50 miles	Installation	\$424.00
	Private Wire 2.75-3.00 miles	Rental	\$180.00
	Private Wire 2.75-3.00 miles	Installation	\$100.00
	Private Wire - Different Exchange	Rental	\$180.00
	Private Wire - Different Exchange	Installation	\$100.00

Provider	Product	Type	Prices
CWWI	Xnet Dialup Internet Service		
	Xnet - X10	Installation	\$80.00
	Xnet - X10	Rental	\$35.00
	Xnet - X20	Installation	\$80.00
	Xnet - X20	Rental	\$60.00
	Xnet - X30	Installation	\$80.00
	Xnet - X30	Rental	\$80.00
	Xnet - X50	Installation	\$80.00
	Xnet - X50	Rental	\$120.00
	Xnet - Unlimited	Installation	\$80.00
	Xnet - Unlimited	Rental	\$129.00
CWWI	Xnet High Speed Internet Service		
	ADSL - Snet on Demand	Rental	\$50.00
	ADSL - Xnet on Demand	Installation	\$300.00
	ADSL - Xlite	Rental	\$99.00
	ADSL - Xlite	Installation	\$300.00
	ADSL - Ultra/Xnet256	Rental	\$99.00
	ADSL - Ultra/Xnet 256	Installation	\$300.00
	ADSL - Select/Xnet512	Rental	\$149.00
	ADSL - Select/Xnet 512	Installation	\$300.00
	ADSL - Premium/Xnet768	Rental	\$299.00
	ADSL - Premium/Xnet 768	Installation	\$300.00
	ADSL - Deluxe/Xnet1.544k	Rental	\$299.00
	ADSL - Deluxe/Xnet 1.544k	Installation	\$300.00
CWWI	Internet Access		
	Internet Port Charges - 28.8	Rental	\$1,200.00
	Dedicated Internet Access - 64 Kbps	Rental	\$2,640.00
	Dedicated Internet Access - 64 Kbps	Installation	\$2,160.00
	Dedicated Internet Access - 128 Kbps	Rental	\$2,500.00
	Dedicated Internet Access - 128 Kbps	Installation	\$2,000.00
	Dedicated Internet Access - 256 Kbps	Rental	\$4,200.00
	Dedicated Internet Access - 256 Kbps	Installation	\$2,000.00
	Dedicated Internet Access - 512 Kbps	Rental	\$6,600.00
	Dedicated Internet Access - 512 Kbps	Installation	\$2,000.00
	Dedicated Internet Access - 768K	Rental	\$18,330.00
	Dedicated Internet Access - 1024kbps	Rental	\$9,800.00
	Dedicated Internet Access - 1024kbps	Installation	\$2,000.00
	Dedicated Internet Access - 1544 Kbps	Rental	\$14,900.00
	Dedicated Internet Access - 1544 Kbps	Installation	\$2,000.00
	Dedicated Internet Access - 2048 Kbps	Rental	\$18,900.00

LIST OF FIGURES AND TABLES

Figure 2.1:	Organisational structure for the National Telecommunications Regulatory Commission	11
Figure 3.1:	Distribution of expenditure for the fiscal years 2004/2005 and 2005/2006	14
Table 4.1:	Status of Telecommunications Licence Applications Received and Processed through the Commission	16
Table 5.1:	Comparison of the Telecommunications Licence Fees Collected by the Inland Revenue Department	17
Table 7.1:	Rebranded Xnet Packages for Residential and Business	20
Table 7.2:	Approved rate changes in EC\$ for the Direct Internet Access Service	21

ABBREVIATIONS AND ACRONYMS

Act	Telecommunications Act, Saint Lucia, No. 27 of 2000
Commission	Saint Lucia National Telecommunications Regulatory Commission
Contracting States	St. Kitts & Nevis, Dominica, Saint Lucia, St. Vincent & the Grenadines, Grenada
CTU	Caribbean Telecommunications Union
DIA	Direct Internet Access
ECTEL	Eastern Caribbean Telecommunications Authority
ECTEL Member	St. Kitts & Nevis, Dominica, Saint Lucia, St. Vincent & the

APPENDIX F

Provider	Product	Type	Prices
	Dedicated Internet Access - 2048 Kbps	Installation	\$2,000.00
	Dedicated Internet Access - 3Mbps	Rental	\$59,400.00
	Dedicated Internet Access - 3Mbps	Installation	\$4,320.00
	Dedicated Internet Access - 4Mbps	Rental	\$72,900.00
	Dedicated Internet Access - 4Mbps	Installation	\$4,320.00
	Dedicated Internet Access - 5Mbps	Rental	\$85,050.00
	Dedicated Internet Access - 5Mbps	Installation	\$6,750.00
	Dedicated Internet Access - 6Mbps	Rental	\$93,150.00
	Dedicated Internet Access - 6Mbps	Installation	\$6,750.00
	Dedicated Internet Access - 7Mbps	Rental	\$104,625.00
	Dedicated Internet Access - 7Mbps	Installation	\$6,750.00
	Dedicated Internet Access - 8Mbps	Rental	\$112,050.00
	Dedicated Internet Access - 8Mbps	Installation	\$6,750.00
	Dedicated Internet Access - 9Mbps	Rental	\$122,850.00
	Dedicated Internet Access - 9Mbps	Installation	\$6,750.00
	Dedicated Internet Access - 10Mbps	Rental	\$128,925.00
	Dedicated Internet Access - 10Mbps	Installation	\$6,750.00
	Dedicated Internet Access - 15Mbps	Rental	\$170,100.00
	Dedicated Internet Access - 15Mbps	Installation	\$6,750.00
	Dedicated Internet Access - 20Mbps	Rental	\$210,600.00
	Dedicated Internet Access - 20Mbps	Installation	\$6,750.00
	Dedicated Internet Access - 25Mbps	Rental	\$249,750.00
	Dedicated Internet Access - 25Mbps	Installation	\$6,750.00
	Dedicated Internet Access - 30Mbps	Rental	\$286,200.00
	Dedicated Internet Access - 30Mbps	Installation	\$6,750.00
	Dedicated Internet Access - 35Mbps	Rental	\$324,000.00
	Dedicated Internet Access - 35Mbps	Installation	\$6,750.00
	Dedicated Internet Access - 40Mbps	Rental	TBA
	Dedicated Internet Access - 40Mbps	Installation	\$6,750.00
	Dedicated Internet Access - 45Mbps	Rental	\$394,200.00
	Dedicated Internet Access - 45Mbps	Installation	\$6,750.00
	Domestic L/C Approach Link E1	Rental	\$5,200.00
	64kbit/s Access Bandwidth chg.per mnth.	Rental	\$440.00
	128kbit/s Access Bandwidth chg.per mnth.	Rental	\$750.00
	256kbit/s Access Bandwidth chg.per mnth.	Rental	\$1,380.00
	512kbit/s Access Bandwidth chg.per mnth	Rental	\$1,550.00
	E1 Access Bandwidth charge per month	Rental	\$1,845.00
CWWI	Payphone Services		
	Renter Payphone Package-DEL + Equipment	Rental	\$68.00
	Renter Payphone Package-DEL + Equipment	Installation	\$125.00
	Payphone to Fixed Line - Day	Minute	\$0.25

APPENDIX F

Provider	Product	Type	Prices
	Payphone to Fixed Line - Evening	Minute	\$0.25
	Payphone to Fixed Line - Weekend	Minute	\$0.25
	Payphone to Mobile Phone - Day	Minute	\$1.00
	Payphone to Mobile Phone - Evening	Minute	\$1.00
	Payphone to Mobile Phone - Weekend	Minute	\$1.00
CWWI	Toll Free Services		
	Number Assignment	per number	\$150.00
	Vanity Number	one-time charge	\$100.00
	Service Charges	one-time charge	\$50.00
	Minimum Usage Charges	per number	\$20.00
	Usage Rates	per minute	\$0.06
	Service Fee	Monthly	\$54.00
CWWI	International Direct Dialing		
	OECS – day	Minute	\$0.50
	OECS - night	Minute	\$0.50
	OECS - weekend	Minute	\$0.50
	Rest of C&W Caribbean Islands - day	Minute	\$0.66
	Rest of C&W Caribbean Islands - night	Minute	\$0.66
	Rest of C&W Caribbean Islands - weekend	Minute	\$0.66
	Rest of Caribbean - day	Minute	\$0.85
	Rest of Caribbean - night	Minute	\$0.85
	Rest of Caribbean - weekend	Minute	\$0.85
	USA - day	Minute	\$1.25
	USA - night	Minute	\$0.90
	USA - weekend	Minute	\$0.90
	Canada - day	Minute	\$1.25
	Canada - night	Minute	\$0.90
	Canada - weekend	Minute	\$0.90
	UK & Ireland - day	Minute	\$1.25
	UK & Ireland - night	Minute	\$0.90
	UK & Ireland - weekend	Minute	\$0.90
	France - day	Minute	\$1.29
	France - night	Minute	\$1.25
	France - weekend	Minute	\$1.25
	Germany - day	Minute	\$1.29
	Germany - night	Minute	\$1.25
	Germany - weekend	Minute	\$1.25
	Central America - day	Minute	\$1.29
	Central America - night	Minute	\$1.25
	Central America - weekend	Minute	\$1.25

APPENDIX F

Provider	Product	Type	Prices
	South America - day	Minute	\$1.29
	South America - night	Minute	\$1.25
	South America - weekend	Minute	\$1.25
	Europe - day	Minute	\$1.29
	Europe - night	Minute	\$1.25
	Europe - weekend	Minute	\$1.25
	Rest of World – day	Minute	\$1.29
	Rest of World – night	Minute	\$1.25
	Rest of World – weekend	Minute	\$1.25

Mobile/Cellular Pre-Paid & Post-Paid Rates and Packages

Cable & Wireless Caribbean Cellular (St. Lucia) Limited

Post-Paid Plan	Digital 40	Digital 150	Digital 350	Digital 500
Monthly Plan (EC\$)	\$57	\$115	\$210	\$285
Minutes included per month	40	150	350	500
Peak Outbound per minute (EC\$)	\$0.79	\$0.79	\$0.79	\$0.79
Off Peak Outbound per minute (EC\$)	\$0.59	\$0.59	\$0.59	\$0.59
Incoming per minute (EC\$)	Free	Free	Free	Free

NB: *Off-Peak rates apply to evening rates between 6:00 p.m. and 8:00 a.m. weekdays; weekend*

Post-Paid Plan - bComplete	b200	b400	b600
Monthly Plan (EC\$)	\$45	\$85	\$130
Minutes included per month	200	400	600
Peak Outbound per minute (EC\$)	\$0.79	\$0.79	\$0.79
Off Peak Outbound per minute (EC\$)	\$0.59	\$0.59	\$0.59
Voice Mail Retrieval	Free	Free	Free
Free Text Messages	10	10	10
Additional Peak Outbound per minute -	\$0.59	\$0.59	\$0.59
Additional Off-Peak Outbound per minute -	\$0.55	\$0.55	\$0.55
Additional Peak Outbound per minute - Fixed Line	\$0.59	\$0.59	\$0.59
Additional Off-Peak Outbound per minute - Fixed Line	\$0.59	\$0.59	\$0.59
Additional Anytime Outbound per minute - Fixed/Mobile	\$0.79	\$0.79	\$0.79
Additional Text Messages - Any Local Network	\$0.20	\$0.20	\$0.20

APPENDIX F

Additional Text Messages - Different CWWI Island	\$0.40	\$0.40	\$0.40
Outbound to Any International Network	\$0.50	\$0.50	\$0.50
Incoming per minute (EC\$)	Free	Free	Free

Post-Paid Plan - bExec	bExec	bExec	bExec	bExec	bExec	bExec	bExec
	1000	2000	3500	5000	7500	10000	25000
Monthly Plan (EC\$)	\$235	\$425	\$750	\$1,000	\$1,500	\$2,050	\$5,000
Minutes included per month	1000	2000	3500	5000	7500	10000	25000
Voicemail Retrieval	Free	Free	Free	Free	Free	Free	Free
Free Text Messages	20	50	50	100	200	350	500
Additional Peak Outbound per minute - Fixed Line	\$0.49	\$0.45	\$0.45	\$0.45	\$0.45	\$0.45	\$0.45
Additional Off-Peak Outbound per minute - Mobile	\$0.49	\$0.45	\$0.45	\$0.45	\$0.45	\$0.45	\$0.45
Additional Peak Outbound per minute - Fixed Line	\$0.59	\$0.49	\$0.49	\$0.49	\$0.49	\$0.48	\$0.46
Additional Off-Peak Outbound per minute - Fixed Line	\$0.59	\$0.49	\$0.49	\$0.49	\$0.49	\$0.48	\$0.46
Additional Anytime Outbound per minute - Fixed/Mobile	\$0.79	\$0.79	\$0.79	\$0.79	\$0.79	\$0.79	\$0.79
Additional Text Messages - Any Local Network	\$0.20	\$0.20	\$0.20	\$0.20	\$0.20	\$0.20	\$0.20
Additional Text Messages - Different CWWI Island	\$0.40	\$0.40	\$0.40	\$0.40	\$0.40	\$0.40	\$0.40
Outbound to Any International Network	\$0.50	\$0.50	\$0.50	\$0.50	\$0.50	\$0.50	\$0.50
Incoming per minute (EC\$)	Free	Free	Free	Free	Free	Free	Free

NB: Peak rates apply Monday - Friday 6am to 8pm

Digicel (St. Lucia) Limited

Post-Paid Plan	DigiSELEC T 80	DigiSELEC T 120	DigiSELEC T 180	DigiSELEC T 270	DigiSELEC T 300	DigiSELEC T 450	DigiSELEC T 600	DigiSELECT 900
Monthly Plan (EC\$)	\$48	\$48	\$99	\$99	\$150	\$150	\$285	\$285
Minimum Deposits		\$100		\$150		\$200		\$300
Credit Limit		\$200		\$300		\$400		\$600
Free Minutes per month	80	120	180	270	300	450	600	900
Rates to Own Mobile								
- Day (EC\$)	\$ 0.70	0.70	\$ 0.65	0.65	\$ 0.60	0.60	\$0.55	0.55
- Evening (EC\$)	\$ 0.55	0.55	\$ 0.55	0.55	\$0.55	0.55	\$ 0.55	0.55
- Weekend (EC\$)	\$ 0.50	0.50	\$0.50	0.50	\$ 0.50	0.50	\$ 0.50	0.50
Rates to Fixed line & Other Mobile								
-Day (EC\$)	\$ 0.80	0.80	\$ 0.75	0.75	\$ 0.70	0.70	\$0.65	0.65
- Evening (EC\$)	\$ 0.65	65.00	\$ 0.65	0.65	\$ 0.65	0.65	\$ 0.65	0.65
- Weekend (EC\$)	\$ 0.60	0.60	\$ 0.60	0.60	\$ 0.60	0.60	\$ 0.60	0.60
Incoming per minute(EC\$)	Free		Free		Free		Free	

Wireless Ventures (St. Lucia) Limited

Post-Paid Plan	Plan 80	Plan 125	Plan 250	Plan 450	Plan 600
Monthly Plan (EC\$)	\$50	\$ 75	\$ 125	\$ 200	\$ 300
Free Minutes per month	80	120	250	450	800
Outgoing Calls (7am to 6:59pm, Mon-Fri)					
- To WV Mobiles (EC\$)	\$ 0.70	\$ 0.65	\$ 0.60	\$ 0.55	\$ 0.50
- To Fixed Line (EC\$)	\$ 0.80	\$ 0.75	\$ 0.70	\$ 0.65	\$ 0.60
- To Other Mobiles (EC\$)	\$ 0.90	\$ 0.85	\$ 0.80	\$ 0.75	\$ 0.70
Nights & Weekends (7pm to 6:59am, Mon-Fri, all hours Sat & Sun)					
- To WV Mobiles (EC\$)	\$ 0.50	\$ 0.55	\$ 0.50	\$ 0.50	\$ 0.40

Mobile/Cellular Pre-Paid Rates

Operator	Pre-Paid Per Minute Charges/ECS		
	Peak	Off-peak	Weekend
<i>Outgoing Mobile-to-Mobile of Same Operator</i>			
C&W Caribbean Cellular	0.70	0.55	0.55
Digicel / Wireless Ventures	0.75	0.65	0.50
<i>Outgoing Mobile-to-Fixed</i>			
C&W Caribbean Cellular	0.84	0.75	0.75
Digicel / Wireless Ventures	0.85	0.80	0.75
<i>Outgoing Mobile-to-Mobile of Another Operator</i>			
C&W Caribbean Cellular	0.80	0.80	0.80
Digicel / Wireless Ventures	0.85	0.80	0.75

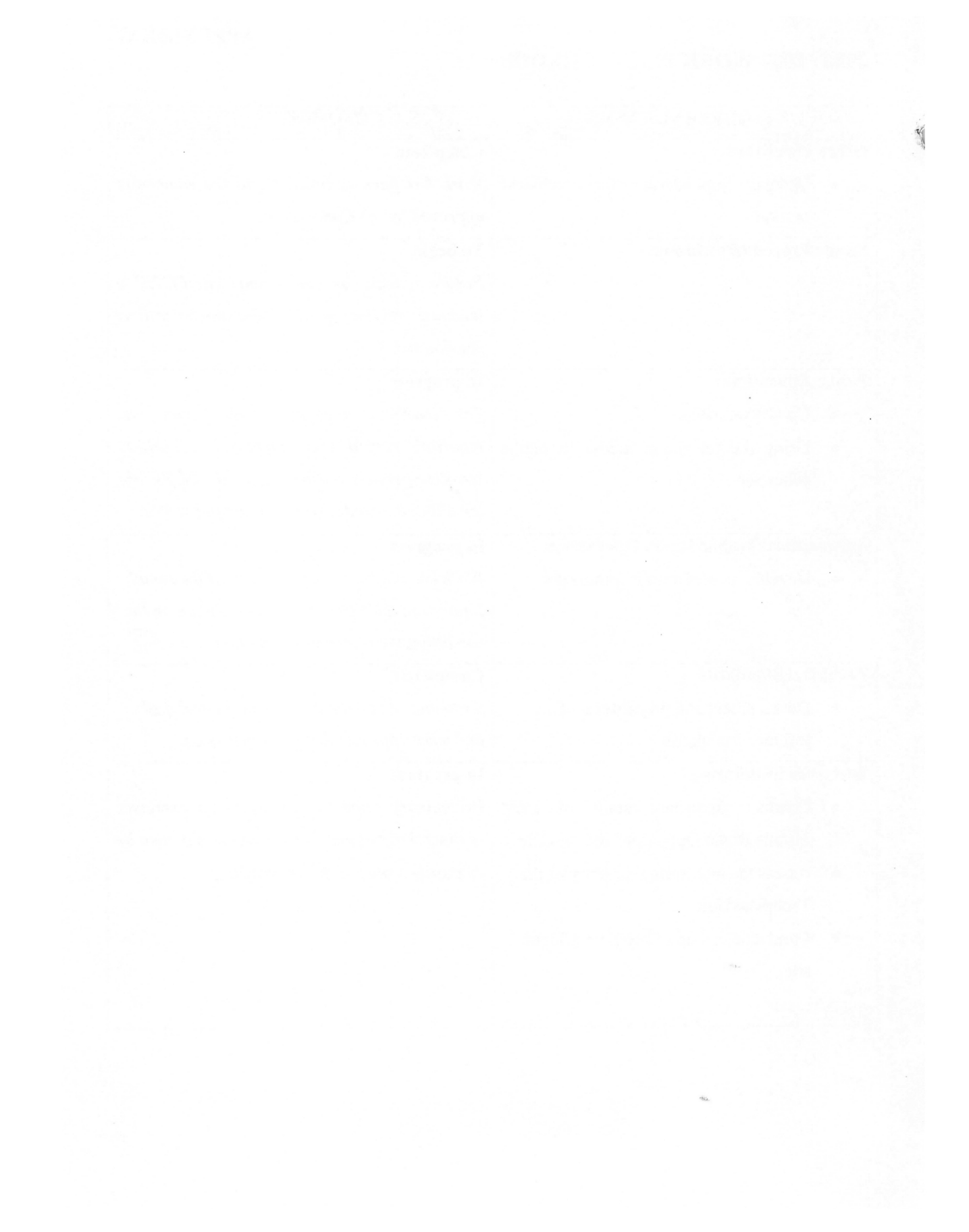
States	Grenadines, Grenada
ECTEL Treaty	Treaty Establishing the Eastern Caribbean Telecommunications Authority
ITU	International Telecommunications Union
Member States	St. Kitts & Nevis, Dominica, Saint Lucia, St. Vincent & the Grenadines, Grenada
Minister	Minister with responsibility for Telecommunications
MMS	Mobile Monitoring Station
NTRCs	National Telecommunications Regulatory Commissions in the ECTEL Member States
OECS	Organisation of Eastern Caribbean States
OOCUR	Organisation of Caribbean Utility Regulators
SMMS	Spectrum Monitoring and Management System
Treaty	Treaty Establishing the Eastern Caribbean Telecommunications Authority

APPENDIX G:

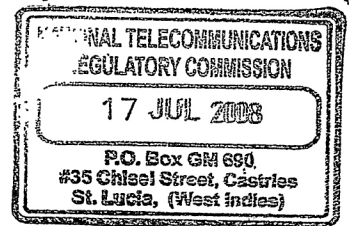
2005 / 2006 Work Plan Schedule

2006 / 2007 WORK PLAN SCHEDULE

PROJECT & GENERAL TASKS	STATUS & COMMENTS
Office Procedures <ul style="list-style-type: none"> • Internal procedures for technical section 	Completed <i>Work has been completed and the same was approved by the Commission.</i>
Sector Procedures Manual	To begin <i>Progress may be dependant on ECTEL's intended review of the telecommunications regulations.</i>
Public Education <ul style="list-style-type: none"> • Update website • Using the television media in public education 	In progress <i>The overhaul exercise which began last reporting period was completed. Work to sensitize persons on the role of the NTRC via the television media is in its planning stages.</i>
Aeronautical Mobile Radio Operations <ul style="list-style-type: none"> • Development of a draft framework 	In progress <i>Work has begun the development of the same. Input from the ECCAA is being solicited in the compiling the relevant information.</i>
Technical Standards <ul style="list-style-type: none"> • Development and preparation of technical standards 	Completed <i>A number of standards have been developed and were approved by the Commission.</i>
Spectrum Monitoring <ul style="list-style-type: none"> • Conduct frequency audit of Land Mobile Radio Operations in Saint Lucia • Assess the monitoring capacity of the Technical Unit • Conduct clean up of Moule-a-Chique site 	In progress <i>Preliminary work to facilitate the exercises outlined has begun. The operators will also be engaged as part of the undertaking</i>



COPY



THE NATIONAL TELECOMMUNICATIONS REGULATORY COMMISSION

FINANCIAL STATEMENTS

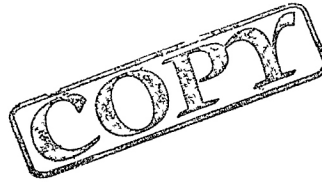
SEPTEMBER 30, 2007

**G LLEWELLYN GILL & CO.
CHARTERED ACCOUNTANTS
P O BOX 546, CASTRIES**

THE NATIONAL TELECOMMUNICATIONS REGULATORY COMMISSION

SEPTEMBER 30, 2007

CONTENTS



	Page
INDEPENDENT AUDITORS' REPORT	1-2
FINANCIAL STATEMENTS	
Balance Sheet	3
Statement of Changes in Funds	4
Statement of Support and Expenditure	5
Statement of Cash Flows	6
Notes to Financial Statements	7-9



G. Llewellyn Gill & Co.

Chartered Accountants

Vane Drive
s Soucis
, Box 546,
tries,
t Lucia.

Telephone: 758-451-925
Fax: 758-451-932
E-Mail: gill@candw.lc

INDEPENDENT AUDITORS' REPORT

To the Commissioners of:

THE NATIONAL TELECOMMUNICATIONS REGULATORY COMMISSION

Report on the Financial Statements

1

We have audited the accompanying financial statements of **THE NATIONAL TELECOMMUNICATIONS REGULATORY COMMISSION** which comprise the balance sheet as at September 30, 2007 and the statement of changes in funds, statement of support and expenditure and cash flow statement for the year then ended, and a summary of significant accounting policies and other explanatory notes.

Management's Responsibility for the Financial Statements

Management is responsible for the preparation and fair presentation of these financial statements in accordance with International Financial Reporting Standards. This responsibility includes: designing, implementing and maintaining internal control relevant to the preparation and fair presentation of financial statements that are free from material misstatement, whether due to fraud or error; selecting and applying appropriate accounting policies; and making accounting estimates that are reasonable in the circumstances.

Auditor's Responsibility

Our responsibility is to express an opinion on these financial statements based on our audit. We conducted our audit in accordance with International Standards on Auditing. Those standards require that we comply with ethical requirements and plan and perform the audit to obtain reasonable assurance whether the financial statements are free of material misstatement.

An audit involves performing procedures to obtain audit evidence about the amounts and disclosures in the financial statements. The procedures selected depend on the auditor's judgement, including the assessment of the risks of material misstatement of the financial statements, whether due to fraud or error. In making those risk assessments, the auditor considers internal control relevant to the entity's preparation and fair presentation of the financial statements in order to design audit procedures that are appropriate in the circumstances, but not for the purpose of expressing an opinion on the effectiveness of the entity's internal control. An audit also includes evaluating the appropriateness of accounting principles used and the reasonableness of accounting estimates made by management, as well as evaluating the overall financial statement presentation.

We believe that the audit evidence we have obtained is sufficient and appropriate to provide a basis for our audit opinion.

INDEPENDENT AUDITORS' REPORT (Cont'd)

To the Commissioners of::

THE NATIONAL TELECOMMUNICATIONS REGULATORY COMMISSION

Report on the Financial Statements

Opinion

In our opinion, the financial statements present fairly, in all material respects, the financial position of **THE NATIONAL TELECOMMUNICATIONS REGULATORY COMMISSION** as of September 30, 2007, and of its financial performance and its cash flows for the year then ended in accordance with International Financial Reporting Standards.

Castries, St Lucia
July 16, 2008


Chartered Accountants

THE NATIONAL TELECOMMUNICATIONS REGULATORY COMMISSION

BALANCE SHEET

AS AT SEPTEMBER 30, 2007



ASSETS

	<u>2007</u>	<u>2006</u>
CURRENT ASSETS		
Cash	\$ 552,169	447,607
Prepaid expenses	<u>13,822</u>	<u>16,192</u>
	<u>565,991</u>	<u>463,799</u>
PROPERTY PLANT & EQUIPMENT (Note 4)	<u>124,854</u>	<u>117,113</u>
	<u>\$ 690,845</u>	<u>\$ 580,912</u>


LIABILITIES

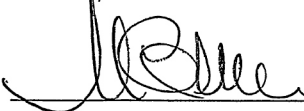
CURRENT LIABILITIES		
Accounts payable	\$ <u>23,246</u>	20,323
Gratuity payable	<u><50,722></u>	<u>73,662</u>
	<u>73,968</u>	<u>93,985</u>

FUNDS

CONTRIBUTED FUNDS (Note 5)	-	2,166
ACCUMULATED SURPLUS	<u>616,877</u>	<u>484,761</u>
	<u>616,877</u>	<u>486,927</u>
	<u>\$ 690,845</u>	<u>\$ 580,912</u>

APPROVED BY THE COMMISSION ON _____, 2008

 Chairman (A)

x  Member

EXECUTIVE SUMMARY

During this financial year, the Commission has continued its efforts at instituting further structures and processes aimed at providing guidance for all stakeholders in the local Telecommunications sector. In that regard, the Technical Standards are in advanced states of development.

Six (6) telecommunications licences were issued by the Minister during the period under review, and a full listing of ***Telecommunications Licences that have been Issued, Modified, Renewed or Revoked***, as of September 30th, 2007, was prepared and forwarded for publication in the Saint Lucia Government Gazette, pursuant to section 14(7) of the Act. Additionally, the issuance of **Certificates of Type Approval** and the registration of **Dealers and Suppliers of Terminal Equipment and Related Services** have continued, with a marked rise in the number of type approvals granted.

Review of the telecommunications legislation has continued, and during the reporting period, the Commission dealt with a number of public consultations initiated by either the Commission itself or from ECTEL.

The Price Cap Plan for Cable & Wireless (West Indies) Limited is now in its final year and Cable & Wireless (West Indies) Limited has submitted the Year 3 Annual Compliance Filing, which is presently under review.

The negotiations for the interconnection agreement between Digicel (St. Lucia) Limited and Cable & Wireless (St. Lucia) Limited are in the final stages.

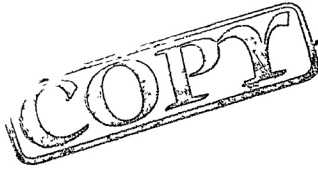
During the year under review the following regulations were promulgated

- Telecommunications (Exemption) Regulations – August 27th, 2007
- Telecommunications (Quality of Service) Regulations – August 27th, 2007
- Telecommunications (Wholesale) Regulations – September 17th, 2007
- Telecommunications (Numbering) Regulations – August 27th, 2007

THE NATIONAL TELECOMMUNICATIONS REGULATORY COMMISSION

STATEMENT OF CHANGES IN FUNDS

YEAR ENDED SEPTEMBER 30, 2007



	<u>Contributed Funds</u>	<u>Accumulated Surplus</u>	<u>Total</u>
Balance at beginning of year	\$ 4,332	\$ 341,367	\$ 345,699
Amortization of Contributed Funds	(2,167)	2,167	-
Excess Support over Expenditure	<u>-</u>	<u>141,228</u>	<u>141,228</u>
Balance at September 30, 2006	<u>\$ 2,165</u>	<u>\$ 484,762</u>	<u>\$ 486,927</u>
Balance at beginning of year	\$ 2,165	\$ 484,762	\$ 486,927
Amortization of Contributed Funds	(2,165)	2,165	-
Excess Support over Expenditure	<u>-</u>	<u>129,950</u>	<u>129,950</u>
Balance at September 30, 2007	<u>\$ -</u>	<u>\$ 616,877</u>	<u>\$ 616,877</u>

The accompanying notes form an integral part of these statements.

THE NATIONAL TELECOMMUNICATIONS REGULATORY COMMISSION

STATEMENT OF SUPPORT AND EXPENDITURE

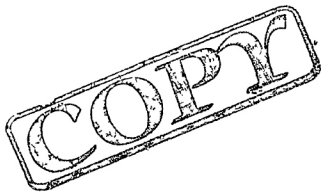
YEAR ENDED SEPTEMBER 30, 2007



	<u>2007</u>	<u>2006</u>
SUPPORT		
Contributions from ECTEL	\$ 748,358	\$ 748,358
Application fees	29,169	44,057
Gain on disposal of assets	847	-
Other	<u>14,132</u>	<u>7,438</u>
	<u>792,506</u>	<u>799,853</u>
EXPENDITURE		
Advertising and promotion	13,884	8,279
Audit	5,000	5,000
Bank charges and interest	1,751	348
Commissioner's fees	80,168	91,200
Depreciation	23,102	20,873
Gratuity	59,924	61,689
Insurance	7,281	9,778
Legal and professional fees	29,050	2,400
Membership and subscriptions	1,116	2,148
Motor vehicle expenses	1,609	2,622
Office expenses	14,152	19,490
Rent	54,000	54,000
Repairs and maintenance	8,671	12,283
Salaries and wages	301,823	307,154
Supplies	3,142	7,546
Training	-	8,777
Travelling and entertainment	4,256	-
Utilities	<u>53,627</u>	<u>45,036</u>
	<u>662,556</u>	<u>658,623</u>
EXCESS OF SUPPORT OVER EXPENDITURE for the year	\$ <u>129,950</u>	\$ <u>141,230</u>

The accompanying notes form an integral part of these statements.

THE NATIONAL TELECOMMUNICATIONS REGULATORY COMMISSION



STATEMENT OF CASH FLOWS
YEAR ENDED SEPTEMBER 30, 2007

	<u>2007</u>	<u>2006</u>
Cash Flows from Operating Activities		
Excess of support over expenditure for the year	\$ 129,950	\$ 141,228
Add/(deduct): charges to income not involving cash		
Depreciation	23,102	20,873
Gain on disposal of assets	<u>(847)</u>	<u>-</u>
	152,205	162,101
Net change in non-cash working capital balances related to operations*	<u>(17,646)</u>	<u>(39,611)</u>
Net cash provided by (used in) operating activities	<u>134,559</u>	<u>122,490</u>
Cash Flows from Investing Activities		
Additions to capital assets	(31,997)	(13,068)
Proceeds from disposal of assets	<u>2,000</u>	<u>-</u>
Net cash provided by (used in) investing activities	<u>(29,997)</u>	<u>(13,068)</u>
INCREASE/(DECREASE) IN CASH	104,562	109,422
CASH AND CASH EQUIVALENTS, beginning of year	<u>447,607</u>	<u>338,185</u>
CASH AND CASH EQUIVALENTS, end of year	<u>\$ 552,169</u>	<u>\$ 447,607</u>
*Consisting of changes in:		
Licence fees payable	\$ -	(23,980)
Prepaid expenses	2,370	(4,813)
Accounts payable	2,924	(27,237)
Gratuity payable	<u>(22,940)</u>	<u>16,419</u>
	<u>\$ (17,646)</u>	<u>\$ (39,611)</u>

The accompanying notes form an integral part of these statements.

THE NATIONAL TELECOMMUNICATIONS REGULATORY COMMISSION

NOTES TO THE FINANCIAL STATEMENTS

COPY

SEPTEMBER 30, 2007

5. CONTRIBUTED FUNDS

These funds have been provided by the Government of St.Lucia as a contribution towards the purchase of Assets for the Commission. The funds were amortized over a period of five years on a straight line basis commencing 2003 .

6. COMPARATIVE FIGURES

Where changes have been made in the presentation of the current year's figures, comparative amounts have been restated.

THE NATIONAL TELECOMMUNICATIONS REGULATORY COMMISSION

NOTES TO THE FINANCIAL STATEMENTS

SEPTEMBER 30, 2007

5. CONTRIBUTED FUNDS

These funds have been provided by the Government of St.Lucia as a contribution towards the purchase of Assets for the Commission. The funds were amortized over a period of five years on a straight line basis commencing 2003 .

6. COMPARATIVE FIGURES

Where changes have been made in the presentation of the current year's figures, comparative amounts have been restated.